

### Human p21 ELISA Kit ab214658

**重组** SimpleStep ELISA

**2 References** **6 图像**

#### 概述

**产品名称** 人p21 ELISA试剂盒

**检测方法** Colorimetric

**精确度** 批次内

样品	n	Mean	SD	CV%
MCF7 lysates	5			4.2%

批次间

样品	n	Mean	SD	CV%
MCF7 lysates	3			7.3%

**样品类型** Cell culture extracts, Tissue Lysate

**检测类型** Sandwich (quantitative)

**灵敏度** 11 pg/ml

**范围** 62.5 pg/ml - 4000 pg/ml

**回收率** 特定样本回收率

样品类型	平均%	范围
Cell culture media	120	115% - 129%

**检测时间** 1h 30m

**实验步骤** One step assay

**种属反应性** **与反应:** Human

**产品概述** Human p21 ELISA Kit (ab214658) is a single-wash 90 min sandwich ELISA designed for the quantitative measurement of p21 protein in tissue lysate and cell culture extracts. It uses our proprietary SimpleStep ELISA® technology. Quantitate Human p21 with 11 pg/ml sensitivity.

SimpleStep ELISA® technology employs capture antibodies conjugated to an affinity tag that is recognized by the monoclonal antibody used to coat our SimpleStep ELISA® plates. This

approach to sandwich ELISA allows the formation of the antibody-analyte sandwich complex in a single step, significantly reducing assay time. See the SimpleStep ELISA® protocol summary in the image section for further details. Our SimpleStep ELISA® technology provides several benefits:

- Single-wash protocol reduces assay time to 90 minutes or less
- High sensitivity, specificity and reproducibility from superior antibodies
- Fully validated in biological samples
- 96-wells plate breakable into 12 x 8 wells strips

A 384-well SimpleStep ELISA® microplate (**ab203359**) is available to use as an alternative to the 96-well microplate provided with SimpleStep ELISA® kits.

## 说明

p21 plays a critical role in the cellular response to DNA damage, and its overexpression results in cell cycle arrest. Upregulation of p21 mRNA and protein following ionizing radiation is dependent on p53 (TP53), and p21 mediates cell cycle arrest in response to the p53 checkpoint pathway. p21 binds to and inhibits cyclin-dependent kinase activity, preventing phosphorylation of critical cyclin-dependent kinase substrates and blocking cell cycle progression. p21 functions in the nuclear localization and assembly of cyclin D-CDK4 complex and promotes its kinase activity towards RB1. At higher stoichiometric ratios, p21 inhibits the kinase activity of the cyclin D-CDK4 complex.

Abcam has not and does not intend to apply for the REACH Authorisation of customers' uses of products that contain European Authorisation list (Annex XIV) substances.

It is the responsibility of our customers to check the necessity of application of REACH Authorisation, and any other relevant authorisations, for their intended uses.

## 平台

Microplate

## 性能

### 存放说明

Store at +4°C. Please refer to protocols.

组件	1 x 96 tests
10X Human p21 Capture Antibody	1 x 600µl
10X Human p21 Detector Antibody	1 x 600µl
10X Wash Buffer PT (ab206977)	1 x 20ml
50X Cell Extraction Enhancer Solution (ab193971)	1 x 1ml
5X Cell Extraction Buffer PTR (ab193970)	1 x 10ml
Antibody Diluent 5BI	1 x 6ml
Human p21 Lyophilized Recombinant Protein	2 vials
Plate Seals	1 unit
Sample Diluent NS (ab193972)	1 x 12ml

组件	1 x 96 tests
SimpleStep Pre-Coated 96-Well Microplate (ab206978)	1 unit
Stop Solution	1 x 12ml
TMB Development Solution	1 x 12ml

**功能** May be the important intermediate by which p53/TP53 mediates its role as an inhibitor of cellular proliferation in response to DNA damage. Binds to and inhibits cyclin-dependent kinase activity, preventing phosphorylation of critical cyclin-dependent kinase substrates and blocking cell cycle progression. Functions in the nuclear localization and assembly of cyclin D-CDK4 complex and promotes its kinase activity towards RB1. At higher stoichiometric ratios, inhibits the kinase activity of the cyclin D-CDK4 complex.

**组织特异性** Expressed in all adult human tissues, with 5-fold lower levels observed in the brain.

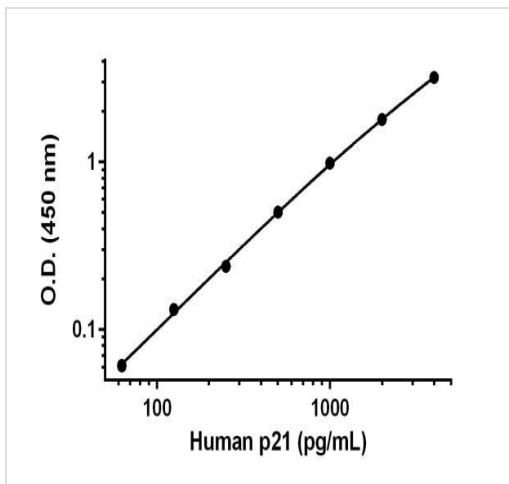
**序列相似性** Belongs to the CDI family.

**结构域** The PIP-box K+4 motif mediates both the interaction with PCNA and the recruitment of the DCX(DTL) complex: while the PIP-box interacts with PCNA, the presence of the K+4 submotif, recruits the DCX(DTL) complex, leading to its ubiquitination. The C-terminal is required for nuclear localization of the cyclin D-CDK4 complex.

**翻译后修饰** Phosphorylation of Thr-145 by Akt or of Ser-146 by PKC impairs binding to PCNA. Phosphorylation at Ser-114 by GSK3-beta enhances ubiquitination by the DCX(DTL) complex. Ubiquitinated by MKRN1; leading to polyubiquitination and 26S proteasome-dependent degradation. Ubiquitinated by the DCX(DTL) complex, also named CRL4(CDT2) complex, leading to its degradation during S phase or following UV irradiation. Ubiquitination by the DCX(DTL) complex is essential to control replication licensing and is PCNA-dependent: interacts with PCNA via its PIP-box, while the presence of the containing the 'K+4' motif in the PIP box, recruit the DCX(DTL) complex, leading to its degradation.

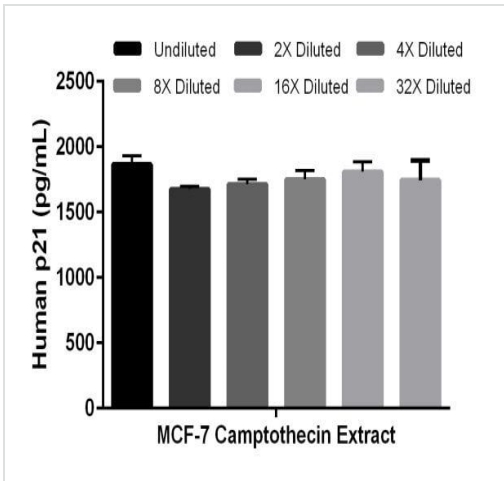
**细胞定位** Cytoplasm. Nucleus.

**图片**



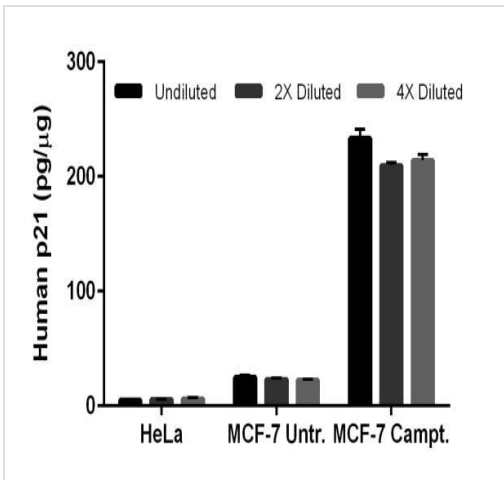
Background-subtracted data values (mean +/- SD) are graphed.

Example of human p21 standard curve.



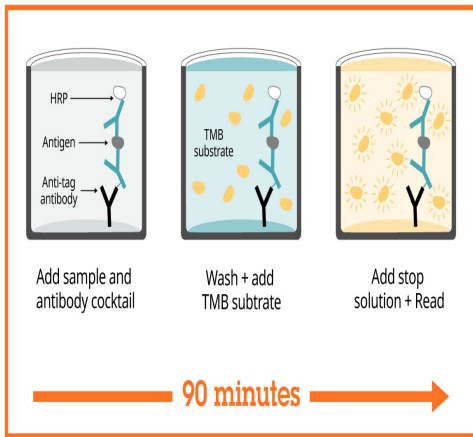
Interpolated concentration of native p21 in human extract samples of MCF-7 cells treated for 18 hours with 1  $\mu$ M camptothecin based on 8  $\mu$ g/mL extract load

The concentrations of p21 were measured in duplicates in a two-fold dilution series and interpolated from the p21 standard curve and corrected for sample dilution. The interpolated dilution factor corrected values are plotted (mean  $\pm$  SD, n=2). The mean p21 concentration was determined to be 1,811 pg/mL in extract sample of MCF-7 cells treated for 18 hours with 1 mM camptothecin.



Interpolated concentrations of native p21 in human extract samples.

Interpolated concentrations of native p21 in human extract samples of HeLa cells, vehicle (DMSO)-treated MCF-7 cells and 18 hours 1  $\mu$ M camptothecin-treated MCF-7 cells samples. The concentrations of p21 were measured in duplicates at 3 different dilutions, interpolated from the p21 standard curve. Note that Undiluted HeLa cell extract and Undiluted vehicle (DMSO)-treated MCF-7 cell extract samples were at 32  $\mu$ g/mL. Note that Undiluted 18 hours 1  $\mu$ M camptothecin-treated MCF-7 cells samples were at 8  $\mu$ g/mL. The interpolated, dilution factor-corrected values are graphed in pg of p21 per  $\mu$ g of total protein (mean  $\pm$  SD, n=2).



Sandwich ELISA - Human p21 ELISA Kit (ab214658)

SimpleStep ELISA technology allows the formation of the antibody-antigen complex in one single step, reducing assay time to 90 minutes. Add samples or standards and antibody mix to wells all at once, incubate, wash, and add your final substrate. See protocol for a detailed step-by-step guide.

Powered by recombinant antibodies

- Research with confidence**  
Consistent and reproducible results
- Long-term and scalable supply**  
Recombinant technology
- Success from the first experiment**  
Confirmed specificity
- Ethical standards compliant**  
Animal-free production

Sandwich ELISA - Human p21 ELISA Kit (ab214658)

To learn more about the advantages of recombinant antibodies see [here](#).

Get more done with SimpleStep ELISA

- Easy to use**  
Single-wash 90-minute protocol
- Flexible**  
Matched antibody pairs available
- Precision antibodies**  
High sensitivity, specificity and reproducibility
- Scalable**  
Now in 10-pack and 384-well formats

Sandwich ELISA - Human p21 ELISA Kit (ab214658)

To learn more about the advantages of SimpleStep ELISA® kits see [here](#).

**Please note:** All products are "FOR RESEARCH USE ONLY. NOT FOR USE IN DIAGNOSTIC PROCEDURES"

## **Our Abpromise to you: Quality guaranteed and expert technical support**

---

- Replacement or refund for products not performing as stated on the datasheet
- Valid for 12 months from date of delivery
- Response to your inquiry within 24 hours
  
- We provide support in Chinese, English, French, German, Japanese and Spanish
- Extensive multi-media technical resources to help you
- We investigate all quality concerns to ensure our products perform to the highest standards

If the product does not perform as described on this datasheet, we will offer a refund or replacement. For full details of the Abpromise, please visit <https://www.abcam.cn/abpromise> or contact our technical team.

## **Terms and conditions**

---

- Guarantee only valid for products bought direct from Abcam or one of our authorized distributors