

Human MS2 ELISA Kit ab213750

1 图像

概述

产品名称	人MS2 ELISA试剂盒				
检测方法	Colorimetric				
精确度	批次内				
	样品	n	Mean	SD	CV%
	1	16	0.22ng/ml	0.013	5.7%
	2	16	1.47ng/ml	0.09	6.1%
	3	16	2.34ng/ml	0.185	7.9%
	批次间				
	样品	n	Mean	SD	CV%
	1	24	0.27ng/ml	0.018	6.8%
	2	24	1.56ng/ml	0.115	7.4%
	3	24	2.58ng/ml	0.214	8.3%
样品类型	Cell culture supernatant, Serum				
检测类型	Sandwich (quantitative)				
灵敏度	< 10 pg/ml				
范围	62.5 pg/ml - 4000 pg/ml				
检测时间	3h 30m				
实验步骤	Multiple steps standard assay				
种属反应性	与反应: Human				
产品概述	The Human MS2 Enzyme-Linked Immunosorbent Assay (ELISA) kit (ab213750) is designed for				

The ELISA kit is based on standard sandwich enzyme-linked immunosorbent assay technology. A monoclonal antibody from mouse specific for MS2 has been pre-coated onto 96-well plates.

Standards (NSO, M1-P497) and test samples are added to the wells, a biotinylated detection polyclonal antibody from goat specific for MS2 is added subsequently and then followed by washing with PBS or TBS buffer. Avidin-Biotin-Peroxidase Complex is added and unbound conjugates are washed away with PBS or TBS buffer. HRP substrate TMB is used to visualize HRP enzymatic reaction. TMB is catalyzed by HRP to produce a blue color product that changed into yellow after adding acidic stop solution. The density of yellow is proportional to the Human MS2 amount of sample captured in plate.

说明

MS2 (also known as ADAM8), a disintegrin and metalloproteinase domain-containing protein 8 is an enzyme that in humans is encoded by the MS2 /ADAM8 gene. MS2 is localized to chromosome 10q26.3. This gene encodes a member of the ADAM (a disintegrin and metalloproteinase domain) family. Members of the ADAM family, such as MS2, are cell surface proteases involved in remodeling of extracellular matrix, cell migration, and processing of membrane-bound signaling molecules. They are characterized by disintegrin and metalloprotease domains that confer adhesive properties and proteolytic activities, respectively. The protein encoded by this gene may be involved in cell adhesion during neurodegeneration.

平台

Pre-coated microplate (12 x 8 well strips)

性能

存放说明

Store at -20°C. Please refer to protocols.

组件	标识符	1 x 96 tests
ABC Diluent Buffer	Blue Cap	1 x 12ml
Adhesive Plate Seal		4 units
Antibody Diluent Buffer	Green Cap	1 x 12ml
Anti-Human MS2 coated Microplate (12 x 8 wells)		1 unit
Avidin-Biotin-Peroxidase Complex (ABC)		1 x 100µl
Biotinylated anti- Human MS2 antibody		1 x 100µl
Lyophilized recombinant Human MS2 standard		2 vials
Sample Diluent Buffer	Green Cap	1 x 30ml
TMB Color Developing Agent	Black Cap	1 x 10ml
TMB Stop Solution	Yellow Cap	1 x 10ml
Wash Buffer (25X)		1 x 20ml

功能

Possible involvement in extravasation of leukocytes.

组织特异性

Expressed on neutrophils and monocytes.

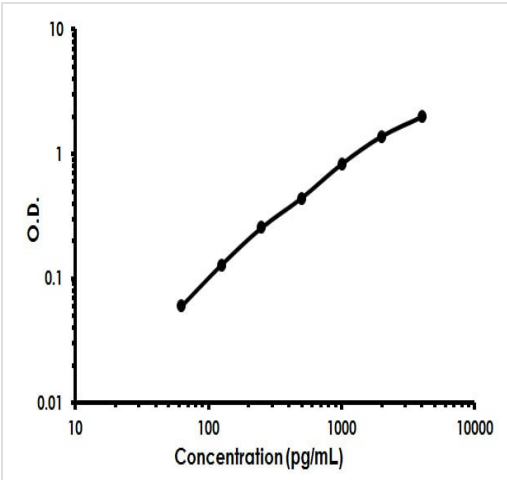
序列相似性

Contains 1 disintegrin domain.

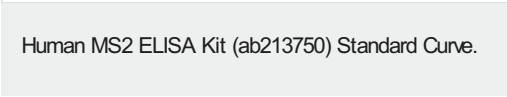
Contains 1 EGF-like domain.

Contains 1 peptidase M12B domain.

图片



Human ADAM8 ELISA Kit (ab213750) Standard Curve.



Please note: All products are "FOR RESEARCH USE ONLY. NOT FOR USE IN DIAGNOSTIC PROCEDURES"

Our Abpromise to you: Quality guaranteed and expert technical support

- Replacement or refund for products not performing as stated on the datasheet
- Valid for 12 months from date of delivery
- Response to your inquiry within 24 hours
- We provide support in Chinese, English, French, German, Japanese and Spanish
- Extensive multi-media technical resources to help you
- We investigate all quality concerns to ensure our products perform to the highest standards

If the product does not perform as described on this datasheet, we will offer a refund or replacement. For full details of the Abpromise, please visit <https://www.abcam.cn/abpromise> or contact our technical team.

Terms and conditions

- Guarantee only valid for products bought direct from Abcam or one of our authorized distributors