

Human MIP-3 alpha ELISA Kit (CCL20) ab269562

重组 SimpleStep ELISA

3 References 6 图像

概述

产品名称 人MIP-3 alpha ELISA试剂盒(CCL20)

检测方法 Colorimetric

批次内				
样品	n	Mean	SD	CV%
Supernatant	8			3%

批次间				
样品	n	Mean	SD	CV%
Supernatant	3			3.1%

样品类型 Cell culture supernatant, Serum, Hep Plasma, EDTA Plasma

检测类型 Sandwich (quantitative)

灵敏度 5.11 pg/ml

范围 18.75 pg/ml - 1200 pg/ml

特定样本回收率		
样品类型	平均%	范围
Cell culture supernatant	92	84% - 104%
Serum	86	83% - 90%
Hep Plasma	98	88% - 106%
EDTA Plasma	88	83% - 90%
Cit plasma	96	84% - 93%

检测时间 1h 30m

实验步骤 One step assay

种属反应性	与反应: Human
产品概述	<p>Human MIP-3 alpha ELISA Kit (CCL20) (ab269562) is a single-wash 90 min sandwich ELISA designed for the quantitative measurement of MIP-3 alpha (CCL20) protein in cell culture supernatant, edta plasma, hep plasma, and serum. It uses our proprietary SimpleStep ELISA® technology. Quantitate Human MIP-3 alpha (CCL20) with 5.11 pg/ml sensitivity.</p> <p>SimpleStep ELISA® technology employs capture antibodies conjugated to an affinity tag that is recognized by the monoclonal antibody used to coat our SimpleStep ELISA® plates. This approach to sandwich ELISA allows the formation of the antibody-analyte sandwich complex in a single step, significantly reducing assay time. See the SimpleStep ELISA® protocol summary in the image section for further details. Our SimpleStep ELISA® technology provides several benefits:</p> <ul style="list-style-type: none">- Single-wash protocol reduces assay time to 90 minutes or less- High sensitivity, specificity and reproducibility from superior antibodies- Fully validated in biological samples- 96-wells plate breakable into 12 x 8 wells strips <p>A 384-well SimpleStep ELISA® microplate (ab203359) is available to use as an alternative to the 96-well microplate provided with SimpleStep ELISA® kits.</p>
说明	<p>MIP-3 alpha (MIP3a, CCL20) is a CC chemokine with a selective chemotactic activity for lymphocytes and dendritic cells. Its main function is to inhibit proliferation of myeloid progenitors in colony formation assays. MIP-3 alpha may be involved in formation and function of the mucosal lymphoid tissues by attracting lymphocytes and dendritic cells towards epithelial cells. C-terminal processed forms have been shown to be equally chemotactically active for leukocytes. MIP-3 alpha is expressed predominantly in the liver, lymph nodes, appendix, peripheral blood lymphocytes, and fetal lung. There are also low levels in thymus, prostate, testis, small intestine and colon. MIP-3 alpha is induced by bacterial lipopolysaccharides, TNF and IFNG/IFN-gamma. Stimulation with phorbol myristate acetate (PMA) in U-937 cell line and Bowes melanoma will induce expression. MIP-3 alpha shares 64.2%, 60.8%, 69.8%, 86.5% sequence homology with mouse, rat, cow, and monkey, respectively.</p>
平台	Pre-coated microplate (12 x 8 well strips)

性能	
----	--

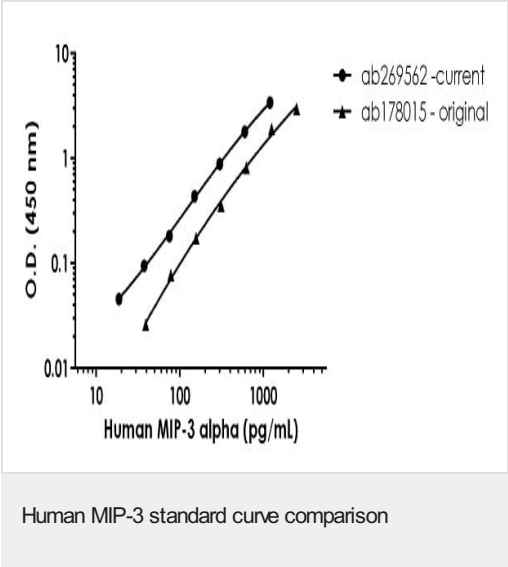
存放说明	Store at +4°C. Please refer to protocols.
------	---

组件	1 x 96 tests
10X Human MIP-3 alpha (CCL20) Capture Antibody	1 x 600µl
10X Human MIP-3 alpha (CCL20) Detector Antibody	1 x 600µl
10X Wash Buffer PT (ab206977)	1 x 20ml
Antibody Diluent 5BI	1 x 6ml
Human MIP-3 alpha (CCL20) Lyophilized Recombinant Protein	2 vials

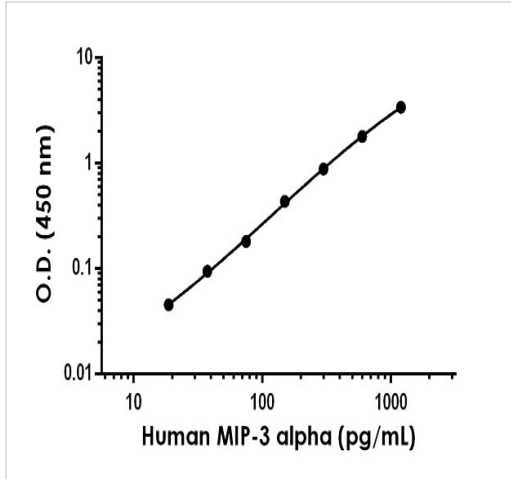
组件	1 x 96 tests
Plate Seals	1 unit
Sample Diluent NS (ab193972)	1 x 12ml
SimpleStep Pre-Coated 96-Well Microplate (ab206978)	1 unit
Stop Solution	1 x 12ml
TMB Development Solution	1 x 12ml

功能	Chemotactic factor that attracts lymphocytes and, slightly, neutrophils, but not monocytes. Inhibits proliferation of myeloid progenitors in colony formation assays. May be involved in formation and function of the mucosal lymphoid tissues by attracting lymphocytes and dendritic cells towards epithelial cells. C-terminal processed forms have been shown to be equally chemotactically active for leukocytes. Possesses antibacterial activity E.coli ATCC 25922 and S.aureus ATCC 29213.
组织特异性	Expressed predominantly in the liver, lymph nodes, appendix, peripheral blood lymphocytes, and fetal lung. Low levels seen in thymus, prostate, testis, small intestine and colon.
序列相似性	Belongs to the intercrine beta (chemokine CC) family.
翻译后修饰	C-terminal processed forms which lack 1, 3 or 6 amino acids are produced by proteolytic cleavage after secretion from peripheral blood monocytes.
细胞定位	Secreted.

图片

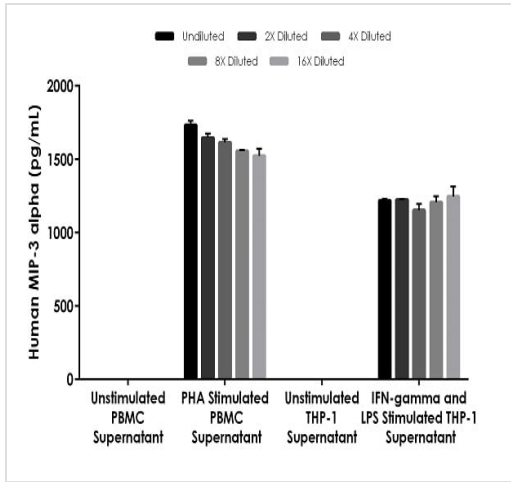


Standard Curve comparison between the original human MMP3 SimpleStep ELISA kit ([ab178015](#)) and current human MMP3 SimpleStep ELISA kit ([ab269562](#)).



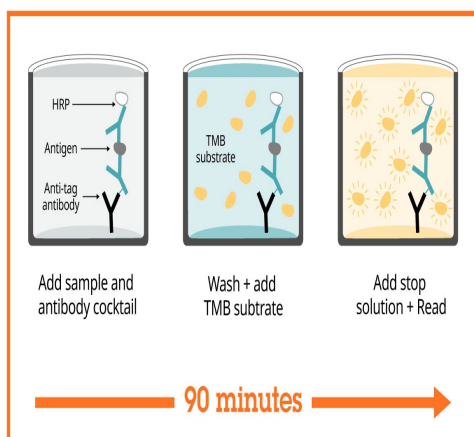
Example of human MIP-3 alpha standard curve in Sample Diluent NS.

The MIP-3 alpha standard curve was prepared as described in Section 10. Raw data values are shown in the table. Background-subtracted data values (mean +/- SD) are graphed.



Interpolated concentrations of native MIP-3 alpha in human cell culture supernatant samples.

The concentrations of MIP-3 alpha were measured in duplicates, interpolated from the MIP-3 alpha standard curves and corrected for sample dilution. Undiluted samples are as follows: unstimulated PBMC 100%, 1.5% PHA stimulated PBMC cell culture supernatant 50%, unstimulated THP-1 100%, and 1ug/mL IFN-gamma and 1ug/mL LPS stimulated THP-1 cell culture supernatant 50%. The interpolated dilution factor corrected values are plotted (mean +/- SD, n=2). The mean MIP-3 alpha concentration was determined to be undetectable in unstimulated PBMC supernatant, 1614.14 pg/mL in PHA stimulated PBMC, undetectable in unstimulated THP-1 supernatant, and 1209.37 pg/mL in IFN-gamma and LPS stimulated THP-1 supernatant.



Sandwich ELISA - Human MIP-3 alpha ELISA Kit
(CCL20) (ab269562)

SimpleStep ELISA technology allows the formation of the antibody-antigen complex in one single step, reducing assay time to 90 minutes. Add samples or standards and antibody mix to wells all at once, incubate, wash, and add your final substrate. See protocol for a detailed step-by-step guide.

Powered by
recombinant antibodies



Research with confidence
Consistent and reproducible results



Long-term and scalable supply
Recombinant technology



Success from the first experiment
Confirmed specificity



Ethical standards compliant
Animal-free production

Sandwich ELISA - Human MIP-3 alpha ELISA Kit
(CCL20) (ab269562)

To learn more about the advantages of recombinant antibodies see [here](#).

**Get more done with
SimpleStep ELISA**



Easy to use

Single-wash 90-minute
protocol



Flexible

Matched antibody pairs
available



Precision antibodies

High sensitivity, specificity
and reproducibility



Scalable

Now in 10-pack and
384-well formats

Sandwich ELISA - Human MIP-3 alpha ELISA Kit
(CCL20) (ab269562)

To learn more about the advantages of SimpleStep ELISA® kits
see [here](#).

Please note: All products are "FOR RESEARCH USE ONLY. NOT FOR USE IN DIAGNOSTIC PROCEDURES"

Our Abpromise to you: Quality guaranteed and expert technical support

- Replacement or refund for products not performing as stated on the datasheet
- Valid for 12 months from date of delivery
- Response to your inquiry within 24 hours
- We provide support in Chinese, English, French, German, Japanese and Spanish
- Extensive multi-media technical resources to help you
- We investigate all quality concerns to ensure our products perform to the highest standards

If the product does not perform as described on this datasheet, we will offer a refund or replacement. For full details of the Abpromise, please visit <https://www.abcam.cn/abpromise> or contact our technical team.

Terms and conditions

- Guarantee only valid for products bought direct from Abcam or one of our authorized distributors