

Human MCP1 ELISA Kit ab100586

10 References 3 图像

概述

产品名称	人MCP1 ELISA试剂盒
检测方法	Colorimetric
样品类型	Cell culture supernatant, Serum, Plasma
检测类型	Sandwich (quantitative)
灵敏度	< 2 pg/ml
范围	2 pg/ml - 500 pg/ml
回收率	93 %

特定样本回收率

样品类型	平均%	范围
Cell culture supernatant	97.62	85% - 104%
Serum	92.65	80% - 102%
Plasma	90.42	79% - 101%

实验步骤 Multiple steps standard assay

种属反应性 与反应: Human

预测可用于: Mouse, Rat 

产品概述 Abcam's MCP1 Human ELISA (Enzyme-Linked Immunosorbent Assay) kit is an *in vitro* enzyme-linked immunosorbent assay for the quantitative measurement of Human MCP1 in serum, plasma, and cell culture supernatants.

This assay employs an antibody specific for Human MCP1 coated on a 96-well plate. Standards and samples are pipetted into the wells and MCP1 present in a sample is bound to the wells by the immobilized antibody. The wells are washed and biotinylated anti-Human MCP1 antibody is added. After washing away unbound biotinylated antibody, HRP-conjugated streptavidin is pipetted to the wells. The wells are again washed, a TMB substrate solution is added to the wells and color develops in proportion to the amount of Leptin bound. The Stop Solution changes the color from blue to yellow, and the intensity of the color is measured at 450 nm.

Get higher sensitivity in only 90 minutes with Human MCP1 ELISA Kit (CCL2) ([ab179886](#)) from

	our SimpleStep ELISA® range.
说明	Optimization may be required with urine samples.
平台	Microplate

## 性能

**存放说明** Store at -20°C. Please refer to protocols.

组件	1 x 96 tests
20X Wash Buffer	1 x 25ml
400X HRP-Streptavidin Concentrate	1 x 200µl
5X Assay Diluent	1 x 15ml
Biotinylated anti-Human MCP1	2 vials
MCP1 Microplate (12 x 8 wells)	1 unit
Recombinant Human MCP1 Standard (lyophilized)	2 vials
Stop Solution	1 x 8ml
TMB One-Step Substrate Reagent	1 x 12ml

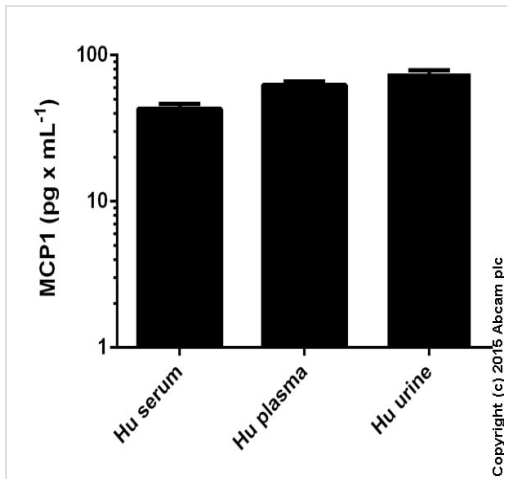
**功能** Chemotactic factor that attracts monocytes and basophils but not neutrophils or eosinophils. Augments monocyte anti-tumor activity. Has been implicated in the pathogenesis of diseases characterized by monocytic infiltrates, like psoriasis, rheumatoid arthritis or atherosclerosis. May be involved in the recruitment of monocytes into the arterial wall during the disease process of atherosclerosis.

**序列相似性** Belongs to the intercrine beta (chemokine CC) family.

**翻译后修饰** Processing at the N-terminus can regulate receptor and target cell selectivity. Deletion of the N-terminal residue converts it from an activator of basophil to an eosinophil chemoattractant.

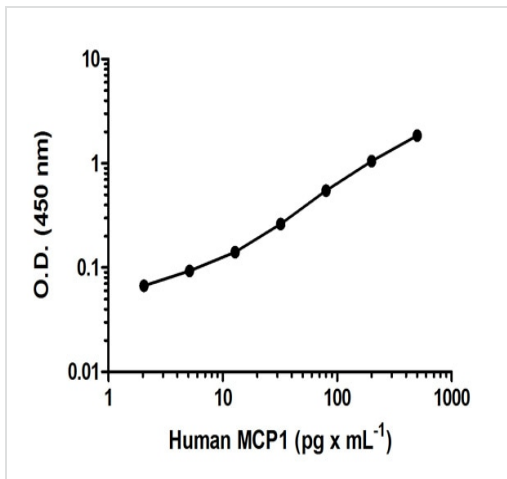
**细胞定位** Secreted.

## 图片



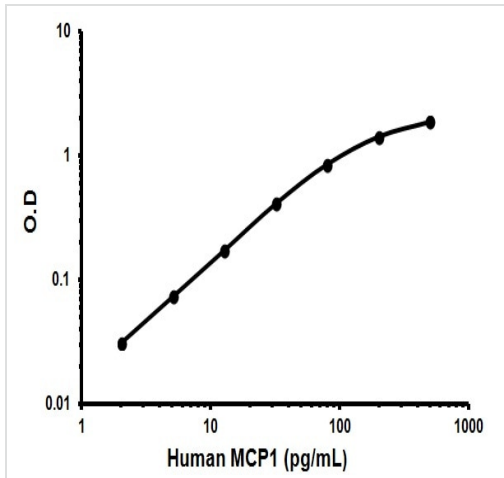
Human MCP1 measured in biological fluids showing quantity (pg) per mL of tested sample. Samples diluted 2-10 fold.

Sandwich ELISA - MCP1 Human ELISA Kit  
(ab100586)



Human MCP1 standard curve: mean of duplicates (+/- SD)

Sandwich ELISA - MCP1 Human ELISA Kit  
(ab100586)



Representative Standard Curve using ab100586

Typical Standard Curve

**Please note:** All products are "FOR RESEARCH USE ONLY. NOT FOR USE IN DIAGNOSTIC PROCEDURES"

### Our Abpromise to you: Quality guaranteed and expert technical support

- Replacement or refund for products not performing as stated on the datasheet
- Valid for 12 months from date of delivery
- Response to your inquiry within 24 hours
- We provide support in Chinese, English, French, German, Japanese and Spanish
- Extensive multi-media technical resources to help you
- We investigate all quality concerns to ensure our products perform to the highest standards

If the product does not perform as described on this datasheet, we will offer a refund or replacement. For full details of the Abpromise, please visit <https://www.abcam.cn/abpromise> or contact our technical team.

### Terms and conditions

- Guarantee only valid for products bought direct from Abcam or one of our authorized distributors