

### Human Lactoferrin ELISA Kit (HLF2) ab108882

[18 References](#) [2 图像](#)

#### 概述

**产品名称** 人Lactoferrin ELISA试剂盒(HLF2)

**检测方法** Colorimetric

**精确度** 批次内

样品	n	Mean	SD	CV%
Overall				3.5%

批次间

样品	n	Mean	SD	CV%
Overall				9.8%

**样品类型** Cell culture supernatant, Saliva, Milk, Urine, Serum, Plasma, Tissue, Cell Lysate, Cerebral Spinal Fluid

**检测类型** Sandwich (quantitative)

**灵敏度** = 0.17 ng/ml

**范围** 0.313 ng/ml - 20 ng/ml

**回收率** = 96 %

**检测时间** 4h 00m

**实验步骤** Multiple steps standard assay

**种属反应性** 与反应: Human

**产品概述** Lactoferrin (HLF2) Human *in vitro* ELISA (Enzyme-Linked Immunosorbent Assay) kit is designed for the quantitative measurement of Lactoferrin levels in Human cell culture supernatants, serum, urine, saliva, milk, cerebrospinal fluid and plasma.

A Lactoferrin specific antibody has been precoated onto 96-well plates and blocked. Standards or test samples are added to the wells and subsequently a Lactoferrin specific biotinylated detection antibody is added and then followed by washing with wash buffer. Streptavidin-Peroxidase Conjugate is added and unbound conjugates are washed away with wash buffer. TMB is then used to visualize Streptavidin-Peroxidase enzymatic reaction. TMB is catalyzed by Streptavidin-Peroxidase to produce a blue color product that changes into yellow after adding acidic stop solution. The density of yellow coloration is directly proportional to the amount of

Lactoferrin captured in plate.

Get results in 90 minutes with Human Lactoferrin ELISA Kit ([ab200015](#)) from our SimpleStep ELISA® range.

**The entire kit may be stored at -20°C for long term storage before reconstitution - Avoid repeated freeze-thaw cycles.**

平台 Microplate

## 性能

存放说明 Store at -20°C. Please refer to protocols.

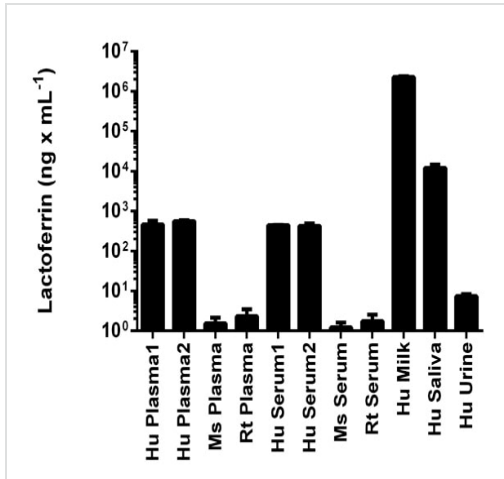
组件	1 x 96 tests
100X Streptavidin-Peroxidase Conjugate	1 x 80µl
10X Diluent N Concentrate	1 x 30ml
20X Wash Buffer Concentrate	2 x 30ml
50X Biotinylated Human Lactoferrin Antibody	1 x 120µl
Chromogen Substrate	1 x 7ml
Lactoferrin Microplate (12 x 8 well strips)	1 unit
Lactoferrin Standard	1 vial
Sealing Tapes	3 units
Stop Solution	1 x 11ml

**功能** Transferrins are iron binding transport proteins which can bind two Fe(3+) ions in association with the binding of an anion, usually bicarbonate. Lactotransferrin has antimicrobial activity which depends on the extracellular cation concentration. Lactoferroxins A, B and C have opioid antagonist activity. Lactoferroxin A shows preference for mu-receptors, while lactoferroxin B and C have somewhat higher degrees of preference for kappa-receptors than for mu-receptors. The lactotransferrin transferrin-like domain 1 functions as a serine protease of the peptidase S60 family that cuts arginine rich regions. This function contributes to the antimicrobial activity.

**序列相似性** Belongs to the transferrin family. Contains 2 transferrin-like domains.

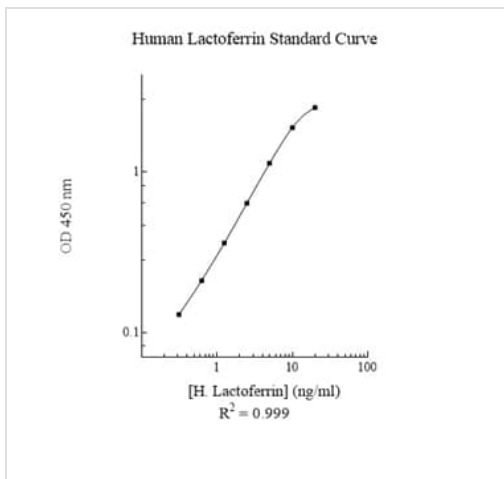
**细胞定位** Secreted.

## 图片



Lactoferrin measured in biological fluids with background signal subtracted (duplicates +/- SD).

Sandwich ELISA - Lactoferrin (HLF2) Human ELISA  
Kit (ab108882)



Representative Standard Curve Using ab108882.

Typical Standard Curve

**Please note:** All products are "FOR RESEARCH USE ONLY. NOT FOR USE IN DIAGNOSTIC PROCEDURES"

### Our Abpromise to you: Quality guaranteed and expert technical support

- Replacement or refund for products not performing as stated on the datasheet
- Valid for 12 months from date of delivery
- Response to your inquiry within 24 hours
- We provide support in Chinese, English, French, German, Japanese and Spanish
- Extensive multi-media technical resources to help you
- We investigate all quality concerns to ensure our products perform to the highest standards

If the product does not perform as described on this datasheet, we will offer a refund or replacement. For full details of the Abpromise, please visit <https://www.abcam.cn/abpromise> or contact our technical team.

## Terms and conditions

---

- Guarantee only valid for products bought direct from Abcam or one of our authorized distributors