

Human Interferon Alpha 2 ELISA Kit ab233622

重组 SimpleStep ELISA

5 图像

概述

产品名称 人Interferon Alpha 2 ELISA试剂盒

检测方法 Colorimetric

精确度

批次内

样品	n	Mean	SD	CV%
Spiked serum	3			2.7%

批次间

样品	n	Mean	SD	CV%
Spiked serum	8			9.3%

样品类型 Serum, Hep Plasma, EDTA Plasma, Cit plasma

检测类型 Sandwich (quantitative)

灵敏度 56.04 pg/ml

范围 187.5 pg/ml - 12000 pg/ml

回收率

特定样本回收率

样品类型	平均%	范围
Serum	103	99% - 109%
Cell culture media	106	100% - 116%
Hep Plasma	104	94% - 108%
EDTA Plasma	87	80% - 93%
Cit plasma	103	102% - 103%

检测时间 1h 30m

实验步骤 One step assay

种属反应性

与反应: Human

产品概述

Human Interferon Alpha 2 ELISA Kit (ab233622) is a single-wash 90 min sandwich ELISA designed for the quantitative measurement of Interferon Alpha 2 protein in cit plasma, edta plasma, hep plasma, and serum. It uses our proprietary SimpleStep ELISA® technology. Quantitate Human Interferon Alpha 2 with 56.04 pg/ml sensitivity.

SimpleStep ELISA® technology employs capture antibodies conjugated to an affinity tag that is recognized by the monoclonal antibody used to coat our SimpleStep ELISA® plates. This approach to sandwich ELISA allows the formation of the antibody-analyte sandwich complex in a single step, significantly reducing assay time. See the SimpleStep ELISA® protocol summary in the image section for further details. Our SimpleStep ELISA® technology provides several benefits:

- Single-wash protocol reduces assay time to 90 minutes or less
- High sensitivity, specificity and reproducibility from superior antibodies
- Fully validated in biological samples
- 96-wells plate breakable into 12 x 8 wells strips

A 384-well SimpleStep ELISA® microplate ([ab203359](#)) is available to use as an alternative to the 96-well microplate provided with SimpleStep ELISA® kits.

平台

Microplate (12 x 8 well strips)

性能

存放说明

Store at +4°C. Please refer to protocols.

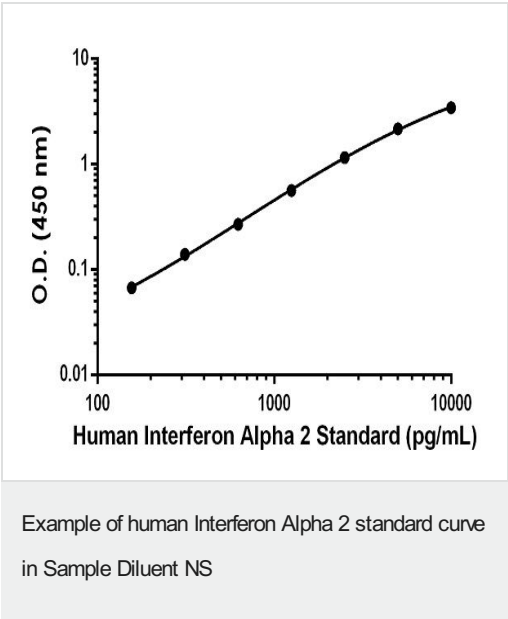
组 件	1 x 96 tests	10 x 96 tests
10X Human Interferon Alpha 2 Capture Antibody	1 x 600µl	1 x 6000µl
10X Human Interferon Alpha 2 Detector Antibody	1 x 600µl	1 x 6000µl
10X Wash Buffer PT (ab206977)	1 x 20ml	1 x 200ml
Antibody Diluent 5BI	1 x 6ml	10 x 6ml
Human Interferon Alpha 2 Lyophilized Purified Protein	2 vials	2 x 10 vials
Plate Seals	1 unit	1 x 10 units
Sample Diluent NS (ab193972)	1 x 50ml	2 x 250ml
SimpleStep Pre-Coated 96-Well Microplate (ab206978)	1 unit	1 x 10 units
Stop Solution	1 x 12ml	1 x 120ml
TMB Development Solution	1 x 12ml	1 x 120ml

功能

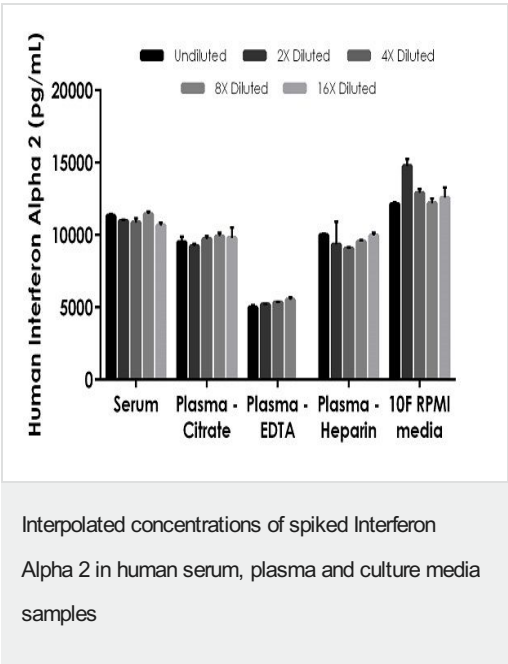
Produced by macrophages, IFN-alpha have antiviral activities.

序列相似性	Belongs to the alpha/beta interferon family.
细胞定位	Secreted.

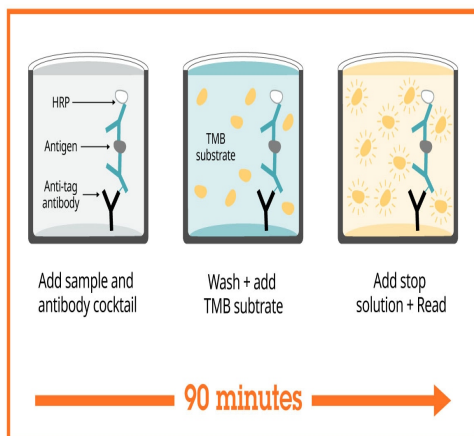
图片



Raw data values are shown in the table. Background-subtracted data values (mean +/- SD) are graphed.



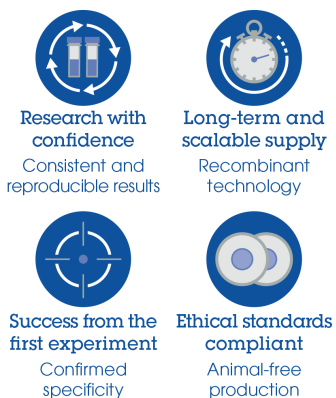
The concentrations of Interferon Alpha 2 were measured in duplicates, interpolated from the Interferon Alpha 2 standard curves.



Sandwich ELISA - Human Interferon Alpha 2 ELISA
Kit (ab233622)

SimpleStep ELISA technology allows the formation of the antibody-antigen complex in one single step, reducing assay time to 90 minutes. Add samples or standards and antibody mix to wells all at once, incubate, wash, and add your final substrate. See protocol for a detailed step-by-step guide.

Powered by
recombinant antibodies



Sandwich ELISA - Human Interferon Alpha 2 ELISA
Kit (ab233622)

To learn more about the advantages of recombinant antibodies see [here](#).

**Get more done with
SimpleStep ELISA**



Easy to use

Single-wash 90-minute protocol



Flexible

Matched antibody pairs available



Precision antibodies

High sensitivity, specificity and reproducibility



Scalable

Now in 10-pack and 384-well formats

To learn more about the advantages of SimpleStep ELISA® kits see [here](#).

Sandwich ELISA - Human Interferon Alpha 2 ELISA
Kit (ab233622)

Please note: All products are "FOR RESEARCH USE ONLY. NOT FOR USE IN DIAGNOSTIC PROCEDURES"

Our Abpromise to you: Quality guaranteed and expert technical support

- Replacement or refund for products not performing as stated on the datasheet
- Valid for 12 months from date of delivery
- Response to your inquiry within 24 hours
- We provide support in Chinese, English, French, German, Japanese and Spanish
- Extensive multi-media technical resources to help you
- We investigate all quality concerns to ensure our products perform to the highest standards

If the product does not perform as described on this datasheet, we will offer a refund or replacement. For full details of the Abpromise, please visit <https://www.abcam.cn/abpromise> or contact our technical team.

Terms and conditions

- Guarantee only valid for products bought direct from Abcam or one of our authorized distributors