

Human Interferon alpha 1 ELISA Kit ab213479

重组 SimpleStep ELISA

6 References [8 图像](#)

概述

产品名称 人Interferon alpha 1 ELISA试剂盒

检测方法 Colorimetric

精确度 批次内

样品	n	Mean	SD	CV%
Overall	3			2%

批次间

样品	n	Mean	SD	CV%
Overall	5			3%

样品类型 Cell culture supernatant, Serum, Cell culture extracts, Tissue Extracts, Hep Plasma, EDTA Plasma, Cit plasma

检测类型 Sandwich (quantitative)

灵敏度 1 pg/ml

范围 4.68 pg/ml - 300 pg/ml

回收率 特定样本回收率

样品类型	平均%	范围
Serum	89	87% - 92%
Cell culture extracts	105	102% - 108%
Cell culture media	93	92% - 94%
Hep Plasma	91	85% - 98%
EDTA Plasma	87	81% - 90%
Cit plasma	77	76% - 78%

检测时间 1h 30m

实验步骤 One step assay

种属反应性 **与反应:** Human

产品概述 Human Interferon alpha 1 ELISA Kit (ab213479) is a single-wash 90 min sandwich ELISA designed for the quantitative measurement of Interferon alpha 1 protein in cell culture extracts, cell culture supernatant, serum, tissue extracts, cit plasma, edta plasma, and hep plasma. It uses our proprietary SimpleStep ELISA® technology. Quantitate Human Interferon alpha 1 with 1 pg/ml sensitivity.

SimpleStep ELISA® technology employs capture antibodies conjugated to an affinity tag that is recognized by the monoclonal antibody used to coat our SimpleStep ELISA® plates. This approach to sandwich ELISA allows the formation of the antibody-analyte sandwich complex in a single step, significantly reducing assay time. See the SimpleStep ELISA® protocol summary in the image section for further details. Our SimpleStep ELISA® technology provides several benefits:

- Single-wash protocol reduces assay time to 90 minutes or less
- High sensitivity, specificity and reproducibility from superior antibodies
- Fully validated in biological samples
- 96-wells plate breakable into 12 x 8 wells strips

A 384-well SimpleStep ELISA® microplate ([ab203359](#)) is available to use as an alternative to the 96-well microplate provided with SimpleStep ELISA® kits.

说明 Interferon alpha-1 belongs to a group of functionally related but distinct proteins of interferon alpha family that share around 80% identity of their amino acid sequences. Members of the interferon-alpha family have both anti-viral and immunomodulatory activities on target cells.

Abcam has not and does not intend to apply for the REACH Authorisation of customers' uses of products that contain European Authorisation list (Annex XIV) substances.

It is the responsibility of our customers to check the necessity of application of REACH Authorisation, and any other relevant authorisations, for their intended uses.

平台 Pre-coated microplate (12 x 8 well strips)

性能

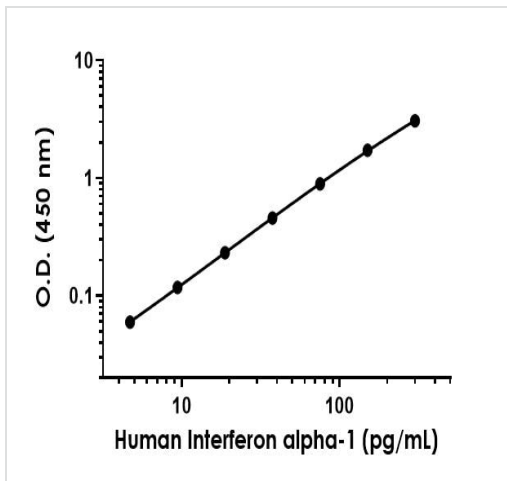
存放说明 Store at +4°C. Please refer to protocols.

组件	1 x 96 tests	1 x 96 tests
10X Human Interferon alpha-1 Capture Antibody	1 x 600µl	1 x 600µl
10X Human Interferon alpha-1 Detector Antibody	1 x 600µl	1 x 600µl
10X Wash Buffer PT (ab206977)	1 x 20ml	1 x 20ml
5X Cell Extraction Buffer PTR (ab193970)	1 x 10ml	1 x 10ml
Antibody Diluent CPI2	1 x 6ml	1 x 6ml

组件	1 x 96 tests	1 x 96 tests
Human Interferon alpha-1 Lyophilized Recombinant Protein	2 vials	2 vials
Plate Seal	1 unit	1 unit
Sample Diluent NS (ab193972)	1 x 50ml	1 x 50ml
SimpleStep Pre-Coated 96-Well Microplate (ab206978)	1 unit	1 unit
Stop Solution	1 x 12ml	1 x 12ml
TMB Development Solution	1 x 12ml	1 x 12ml

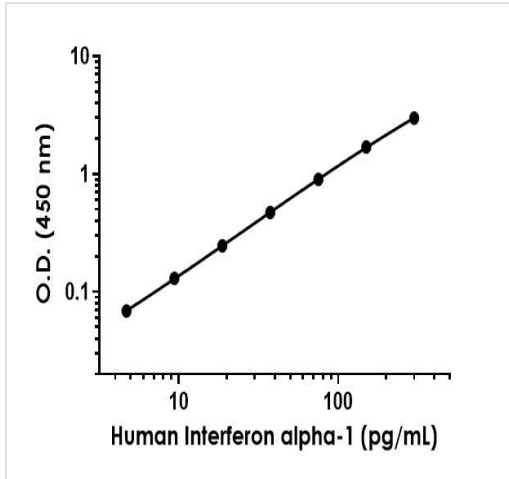
功能	Produced by macrophages, IFN-alpha have antiviral activities. Interferon stimulates the production of two enzymes: a protein kinase and an oligoadenylate synthetase.
序列相似性	Belongs to the alpha/beta interferon family.
细胞定位	Secreted.

图片



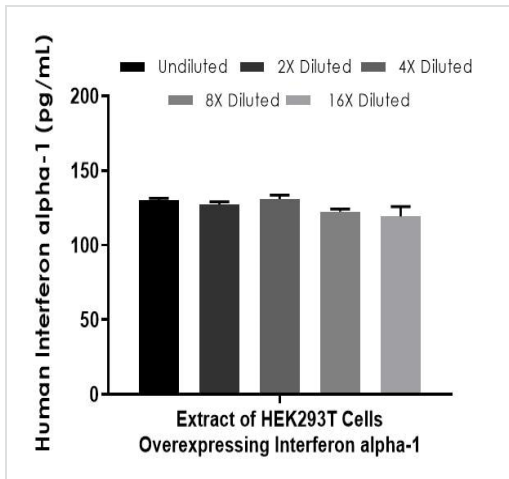
Background-subtracted data values (mean +/- SD) are graphed.

Example of human Interferon alpha-1 standard curve in Sample Diluent NS.



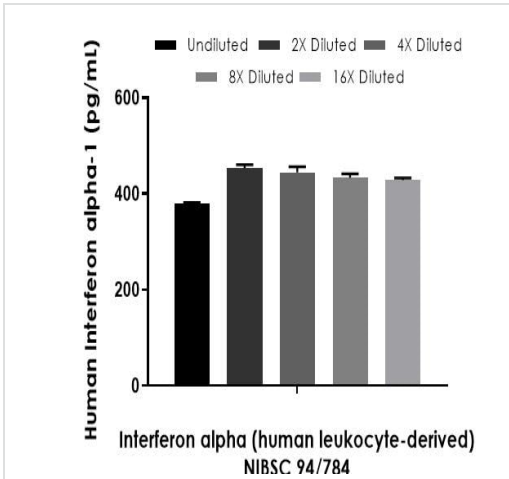
Background-subtracted data values (mean +/- SD) are graphed.

Example of human Interferon alpha-1 standard curve in 1X Cell Extraction Buffer PTR.



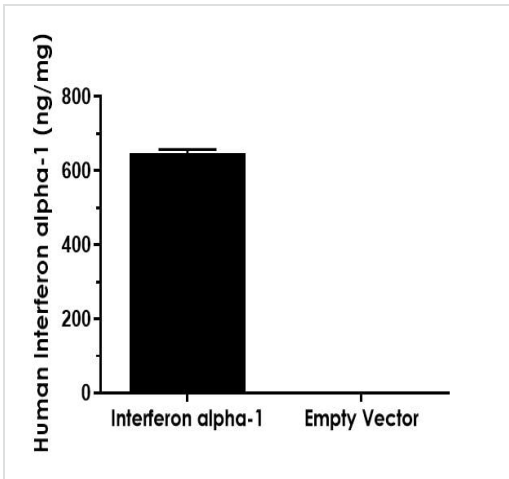
The concentrations of Interferon alpha-1 were measured in duplicate and interpolated from the Interferon alpha-1 standard curve and corrected for sample dilution. The interpolated dilution factor corrected values are plotted (mean +/- SD, n=2). The mean Interferon alpha-1 concentration was determined to be 126 pg/mL in extract of HEK293T cells overexpressing Interferon alpha-1.

Interpolated concentrations of Interferon alpha-1 in extract of HEK293T cells overexpressing human Interferon alpha-1 based on a 200 ng/mL extract load.



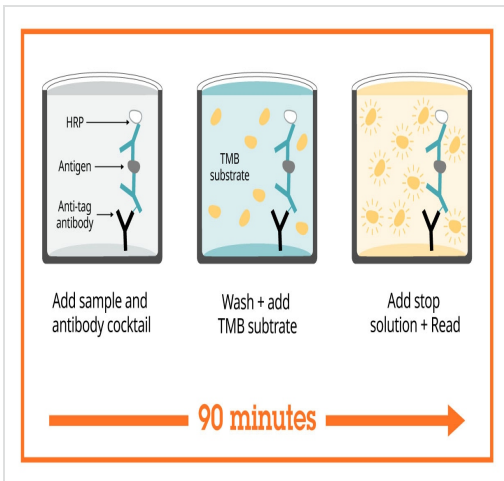
Interpolated concentrations of native Interferon alpha-1 in WHO International Standard INTERFERON ALPHA (Human leukocyte-derived) NIBSC 94/784 based on a 75 IU/mL load.

The concentrations of Interferon alpha-1 were measured in duplicate and interpolated from the Interferon alpha-1 standard curve and corrected for sample dilution. The interpolated dilution factor corrected values are plotted (mean +/- SD, n=2). The mean Interferon alpha-1 concentration was determined to be 427.9 pg/mL in 75 IU/mL WHO International Standard INTERFERON ALPHA (Human leukocyte-derived) NIBSC 94/784.



Interpolated concentrations of Interferon alpha-1 in extracts of HEK293T cells overexpressing human Interferon alpha-1 and HEK293T cells transfected with the associated empty vector.

The concentrations of Interferon alpha-1 were measured in three different dilutions in duplicate and interpolated from the Interferon alpha-1 standard curve and corrected for sample dilution. The interpolated dilution factor corrected values are plotted in ng Interferon alpha-1 per mg of extract (mean +/- SD, n=3). Interferon alpha-1 concentration was determined to be 647.6 ng/mg in extract of HEK293T cells overexpressing Interferon alpha-1. Values for the empty vector were below the minimum detectable dose.



Sandwich ELISA - Human Interferon alpha 1 ELISA Kit (ab213479)

SimpleStep ELISA technology allows the formation of the antibody-antigen complex in one single step, reducing assay time to 90 minutes. Add samples or standards and antibody mix to wells all at once, incubate, wash, and add your final substrate. See protocol for a detailed step-by-step guide.

Powered by recombinant antibodies

<p>Research with confidence Consistent and reproducible results</p>	<p>Long-term and scalable supply Recombinant technology</p>
<p>Success from the first experiment Confirmed specificity</p>	<p>Ethical standards compliant Animal-free production</p>

Sandwich ELISA - Human Interferon alpha 1 ELISA Kit (ab213479)

To learn more about the advantages of recombinant antibodies see [here](#).

Get more done with SimpleStep ELISA



Easy to use
Single-wash 90-minute protocol



Flexible
Matched antibody pairs available



Precision antibodies
High sensitivity, specificity and reproducibility



Scalable
Now in 10-pack and 384-well formats

Sandwich ELISA - Human Interferon alpha 1 ELISA Kit (ab213479)

To learn more about the advantages of SimpleStep ELISA[®] kits see [here](#).

Please note: All products are "FOR RESEARCH USE ONLY. NOT FOR USE IN DIAGNOSTIC PROCEDURES"

Our Abpromise to you: Quality guaranteed and expert technical support

- Replacement or refund for products not performing as stated on the datasheet
- Valid for 12 months from date of delivery
- Response to your inquiry within 24 hours
- We provide support in Chinese, English, French, German, Japanese and Spanish
- Extensive multi-media technical resources to help you
- We investigate all quality concerns to ensure our products perform to the highest standards

If the product does not perform as described on this datasheet, we will offer a refund or replacement. For full details of the Abpromise, please visit <https://www.abcam.cn/abpromise> or contact our technical team.

Terms and conditions

- Guarantee only valid for products bought direct from Abcam or one of our authorized distributors