

Human IL-9 ELISA Kit ab100577

2 图像

概述

产品名称	人IL-9 ELISA试剂盒
检测方法	Colorimetric
样品类型	Cell culture supernatant, Plasma
检测类型	Sandwich (quantitative)
灵敏度	< 0.1 ng/ml
范围	0.04 ng/ml - 30 ng/ml
回收率	98 %

特定样本回收率

样品类型	平均%	范围
Cell culture supernatant	102.1	90% - 110%
Plasma	82.4	67% - 98%

实验步骤 Multiple steps standard assay

种属反应性 与反应: Human

产品概述 Abcam's IL-9 Human ELISA (Enzyme-Linked Immunosorbent Assay) kit is an *in vitro* enzyme-linked immunosorbent assay for the quantitative measurement of Human IL-9 in plasma and cell culture supernatants. (Human IL-9 concentration is pretty low in normal plasma, it may not be detected in this assay).

This assay employs an antibody specific for Human IL-9 coated on a 96-well plate. Standards and samples are pipetted into the wells and IL-9 present in a sample is bound to the wells by the immobilized antibody. The wells are washed and biotinylated anti-Human IL-9 antibody is added. After washing away unbound biotinylated antibody, HRP-conjugated streptavidin is pipetted to the wells. The wells are again washed, a TMB substrate solution is added to the wells and color develops in proportion to the amount of IL-9 bound. The Stop Solution changes the color from blue to yellow, and the intensity of the color is measured at 450 nm.

We have not been able to detect endogenous Human IL-9 in normal serum with ab100577, only in serum spiked with Human IL-9.

说明 Optimization may be required with urine samples.

The standard is affinity purified.

平台

Microplate

性能

存放说明

Store at -20°C. Please refer to protocols.

组件	1 x 96 tests
20X Wash Buffer	1 x 25ml
300X HRP-Streptavidin Concentrate	1 x 200µl
5X Assay Diluent B	1 x 15ml
Assay Diluent A	1 x 30ml
Biotinylated anti-Human IL-9	2 vials
IL-9 Microplate (12 x 8 wells)	1 unit
Recombinant Human IL-9 Standard (lyophilized)	2 vials
Stop Solution	1 x 8ml
TMB One-Step Substrate Reagent	1 x 12ml

功能

Supports IL-2 independent and IL-4 independent growth of helper T-cells.

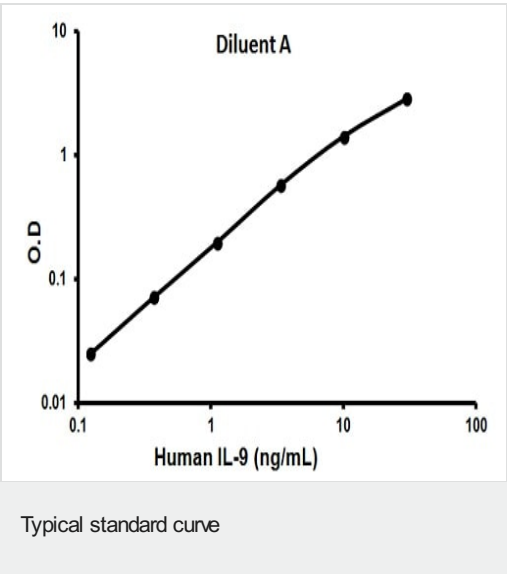
序列相似性

Belongs to the IL-7/IL-9 family.

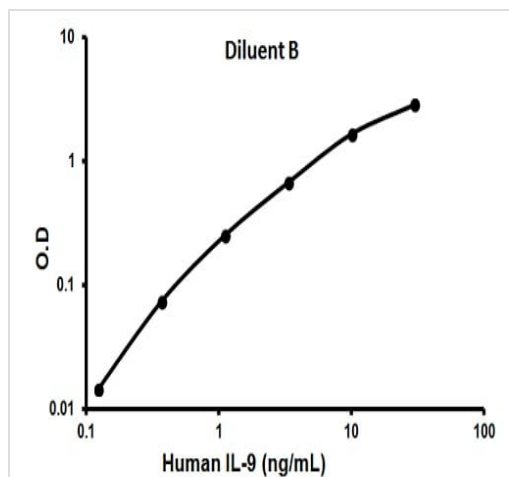
细胞定位

Secreted.

图片



Representative standard curve using ab100577



Representative standard curve using ab100577

Typical standard curve

Please note: All products are "FOR RESEARCH USE ONLY. NOT FOR USE IN DIAGNOSTIC PROCEDURES"

Our Abpromise to you: Quality guaranteed and expert technical support

- Replacement or refund for products not performing as stated on the datasheet
- Valid for 12 months from date of delivery
- Response to your inquiry within 24 hours
- We provide support in Chinese, English, French, German, Japanese and Spanish
- Extensive multi-media technical resources to help you
- We investigate all quality concerns to ensure our products perform to the highest standards

If the product does not perform as described on this datasheet, we will offer a refund or replacement. For full details of the Abpromise, please visit <https://www.abcam.cn/abpromise> or contact our technical team.

Terms and conditions

- Guarantee only valid for products bought direct from Abcam or one of our authorized distributors