

Human FGF1 ELISA Kit ab219636

重组 SimpleStep ELISA

3 References 10 图像

概述

产品名称 人FGF1 ELISA试剂盒

检测方法 Colorimetric

批次内				
样品	n	Mean	SD	CV%
extract	8			3.4%

批次间				
样品	n	Mean	SD	CV%
extract	3			3.8%

样品类型 Cell culture supernatant, Saliva, Urine, Serum, Tissue Extracts, Cell culture media

检测类型 Sandwich (quantitative)

灵敏度 1.97 pg/ml

范围 18.75 pg/ml - 1200 pg/ml

特定样本回收率		
样品类型	平均%	范围
Saliva	88	87% - 91%
Urine	81	78% - 83%
Serum	91	89% - 94%
Tissue Extracts	103	101% - 104%
Cell culture media	114	112% - 115%

检测时间 1h 30m

实验步骤 One step assay

产品概述

Human FGF1 ELISA Kit (ab219636) is a single-wash 90 min sandwich ELISA designed for the quantitative measurement of FGF1 protein in cell culture supernatant, saliva, serum, tissue extracts, urine, and cell culture media. It uses our proprietary SimpleStep ELISA® technology. Quantitate Human FGF1 with 1.97 pg/ml sensitivity.

- Single-wash protocol reduces assay time to 90 minutes or less
- High sensitivity, specificity and reproducibility from superior antibodies
- Fully validated in biological samples
- 96-wells plate breakable into 12 x 8 wells strips

说明

Abcam has not and does not intend to apply for the REACH Authorisation of customers' uses of products that contain European Authorisation list (Annex XIV) substances.

It is the responsibility of our customers to check the necessity of application of REACH Authorisation, and any other relevant authorisations, for their intended uses.

平台

Microplate (12 x 8 well strips)

性能

存放说明

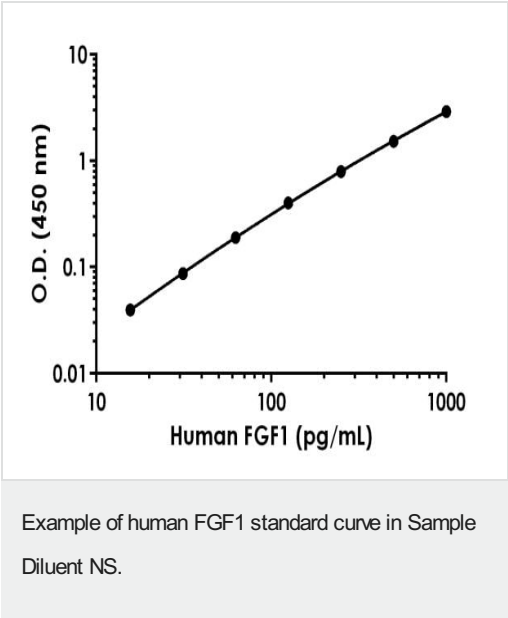
Store at +4°C. Please refer to protocols.

组 件	1 x 96 tests
10X Human FGF1 Capture Antibody	1 x 600µl
10X Human FGF1 Detector Antibody	1 x 600µl
10X Wash Buffer PT (ab206977)	1 x 20ml
50X Cell Extraction Enhancer Solution (ab193971)	1 x 1ml
5X Cell Extraction Buffer PTR (ab193970)	1 x 10ml

组件	1 x 96 tests
Antibody Diluent 4BI	1 x 6ml
Human FGF1 Lyophilized Recombinant Protein	2 vials
Plate Seals	1 unit
Sample Diluent 50BS	1 x 20ml
Sample Diluent NS (ab193972)	1 x 50ml
SimpleStep Pre-Coated 96-Well Microplate (ab206978)	1 unit
Stop Solution	1 x 12ml
TMB Development Solution	1 x 12ml

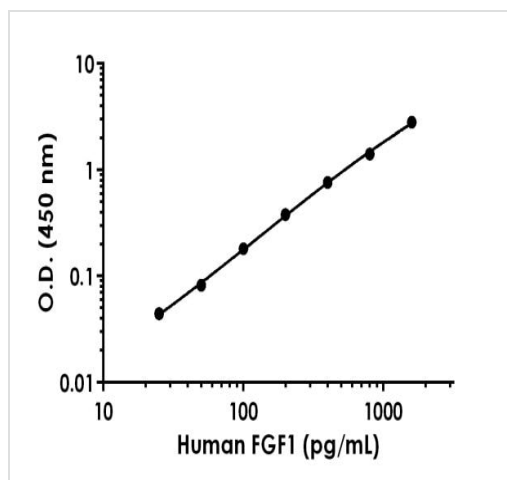
功能	The heparin-binding fibroblast growth factors play important roles in the regulation of cell survival, cell division, angiogenesis, cell differentiation and cell migration. They are potent mitogens in vitro.
序列相似性	Belongs to the heparin-binding growth factors family.
细胞定位	Secreted. Cytoplasm. Cytoplasm > cell cortex. Lacks a cleavable signal sequence. Within the cytoplasm, it is transported to the cell membrane and then secreted by a non-classical pathway that requires Cu(2+) ions and S100A13. Secreted in a complex with SYT1.

图片



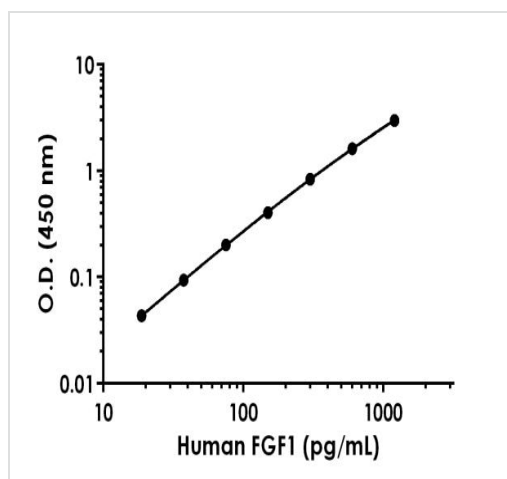
Background-subtracted data values (mean +/- SD) are graphed.

Example of human FGF1 standard curve in Sample Diluent NS.



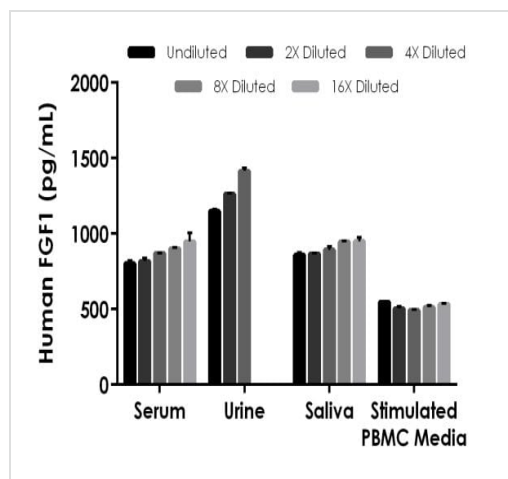
Example of human FGF1 standard curve in Sample Diluent 50BS.

Background-subtracted data values (mean \pm SD) are graphed.



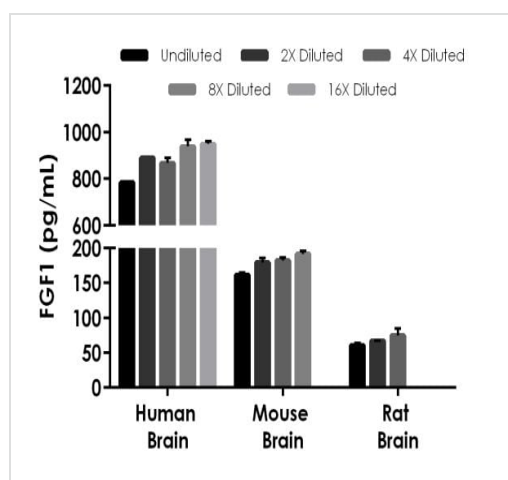
Example of human FGF1 standard curve in Sample Diluent 1X Cell Extraction buffer PTR.

Background-subtracted data values (mean \pm SD) are graphed.



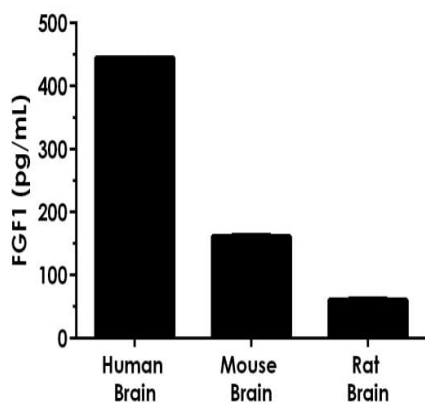
Interpolated concentrations of spiked FGF1 in human serum, urine, saliva, and stimulated PBMC media samples.

The concentrations of FGF1 were measured in duplicates, interpolated from the FGF1 standard curves and corrected for sample dilution. Undiluted samples are as follows: serum 50%, urine 50%, saliva 50%, and stimulated PBMC media 100%. The interpolated dilution factor corrected values are plotted (mean \pm SD, $n=2$). The mean FGF1 concentration was determined to be 868 pg/mL in neat serum, 1,275 pg/mL in neat urine, 903 pg/mL in neat saliva, and 518 pg/mL in neat stimulated PBMC culture media.



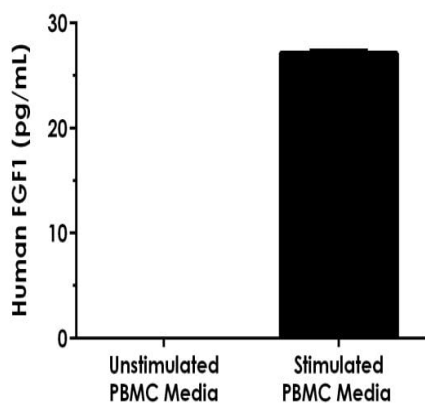
Interpolated concentrations of native FGF1 in human, mouse, and rat brain samples based on 40 μ g/mL, 20 μ g/mL, and 20 μ g/mL extract loads, respectively.

The concentrations of FGF1 were measured in duplicate and interpolated from the FGF1 standard curve and corrected for sample dilution. The interpolated dilution factor corrected values are plotted (mean \pm SD, $n=2$). The mean FGF1 concentration was determined to be 886 pg/mL in human brain extract, 179 pg/mL in mouse brain extract, and 68 pg/mL in rat brain extract.



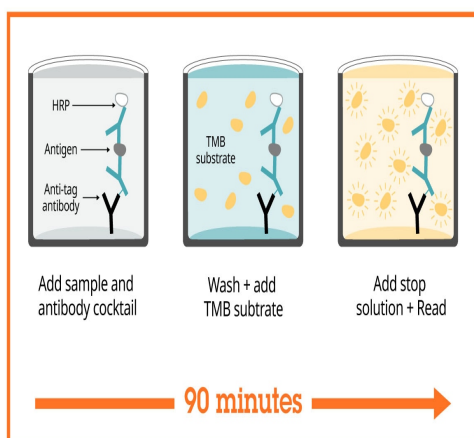
Interpolated concentrations of native FGF1 in human, mouse, and rat brain samples based on 20 µg/mL extract loads for each sample type.

The concentrations of FGF1 were measured in duplicate and interpolated from the FGF1 standard curve. The interpolated values are plotted (mean \pm SD, $n=2$). The mean FGF1 concentration was determined to be 445 pg/mL in human brain extract, 161 pg/mL in mouse brain extract, and 61 pg/mL in rat brain extract.



Interpolated concentrations of native FGF1 in human PBMC unstimulated and stimulated media samples.

The concentrations of FGF1 were measured in duplicates and interpolated from the FGF1 standard curves. Undiluted samples are as follows: unstimulated PBMC media 100% and stimulated PBMC media 100%. The interpolated values are plotted (mean \pm SD, $n=2$). The level of FGF1 in neat unstimulated PBMC media was below the 7th point of the standard curve and could not be interpolated. The mean FGF1 concentration was determined to be 27 pg/mL in neat stimulated PBMC media. PBMC media samples were cultured in RPMI media with 10% fetal bovine serum (unstimulated) for 24 hours and then stimulated for 48 hours with 1.5% PHAM.



Sandwich ELISA - Human FGF1 ELISA Kit
(ab219636)

SimpleStep ELISA technology allows the formation of the antibody-antigen complex in one single step, reducing assay time to 90 minutes. Add samples or standards and antibody mix to wells all at once, incubate, wash, and add your final substrate. See protocol for a detailed step-by-step guide.

Powered by
recombinant antibodies



Research with confidence
Consistent and reproducible results



Long-term and scalable supply
Recombinant technology



Success from the first experiment
Confirmed specificity



Ethical standards compliant
Animal-free production

Sandwich ELISA - Human FGF1 ELISA Kit
(ab219636)

To learn more about the advantages of recombinant antibodies see [here](#).

**Get more done with
SimpleStep ELISA**



Easy to use
Single-wash 90-minute protocol



Flexible
Matched antibody pairs available



Precision antibodies
High sensitivity, specificity and reproducibility



Scalable
Now in 10-pack and 384-well formats

Sandwich ELISA - Human FGF1 ELISA Kit
(ab219636)

To learn more about the advantages of SimpleStep ELISA[®] kits see [here](#).

Please note: All products are "FOR RESEARCH USE ONLY. NOT FOR USE IN DIAGNOSTIC PROCEDURES"

Our Abpromise to you: Quality guaranteed and expert technical support

- Replacement or refund for products not performing as stated on the datasheet
- Valid for 12 months from date of delivery
- Response to your inquiry within 24 hours
- We provide support in Chinese, English, French, German, Japanese and Spanish
- Extensive multi-media technical resources to help you
- We investigate all quality concerns to ensure our products perform to the highest standards

If the product does not perform as described on this datasheet, we will offer a refund or replacement. For full details of the Abpromise, please visit <https://www.abcam.cn/abpromise> or contact our technical team.

Terms and conditions

- Guarantee only valid for products bought direct from Abcam or one of our authorized distributors