

Human ECM1 ELISA Kit ab246524

重组 SimpleStep ELISA

★★★★☆ 1 Abreviews 1 References 6 图像

概述

产品名称	人ECM1 ELISA试剂盒				
检测方法	Colorimetric				
精确度	批次内				
	样品	n	Mean	SD	CV%
	Serum	24			2.8%
	批次间				
	样品	n	Mean	SD	CV%
	Serum	3			3.2%
样品类型	Cell culture supernatant, Serum, Hep Plasma, EDTA Plasma, Cit plasma				
检测类型	Sandwich (quantitative)				
灵敏度	36 pg/ml				
范围	62.5 pg/ml - 4000 pg/ml				
回收率	特定样本回收率				
	样品类型	平均%		范围	
	Cell culture supernatant	101		97% - 104%	
	Serum	114		104% - 132%	
	Hep Plasma	105		100% - 109%	
	EDTA Plasma	109		100% - 112%	
	Cit plasma	109		104% - 113%	
检测时间	1h 30m				
实验步骤	One step assay				

种属反应性

与反应: Human
不与反应: Cow

产品概述

Human ECM1 ELISA Kit (ab246524) is a single-wash 90 min sandwich ELISA designed for the quantitative measurement of ECM1 protein in cell culture supernatant, cit plasma, edta plasma, hep plasma, and serum. It uses our proprietary SimpleStep ELISA® technology. Quantitate Human ECM1 with 36 pg/ml sensitivity.

SimpleStep ELISA® technology employs capture antibodies conjugated to an affinity tag that is recognized by the monoclonal antibody used to coat our SimpleStep ELISA® plates. This approach to sandwich ELISA allows the formation of the antibody-analyte sandwich complex in a single step, significantly reducing assay time. See the SimpleStep ELISA® protocol summary in the image section for further details. Our SimpleStep ELISA® technology provides several benefits:

- Single-wash protocol reduces assay time to 90 minutes or less
- High sensitivity, specificity and reproducibility from superior antibodies
- Fully validated in biological samples
- 96-wells plate breakable into 12 x 8 wells strips

A 384-well SimpleStep ELISA® microplate (**ab203359**) is available to use as an alternative to the 96-well microplate provided with SimpleStep ELISA® kits.

平台

Pre-coated microplate (12 x 8 well strips)

性能

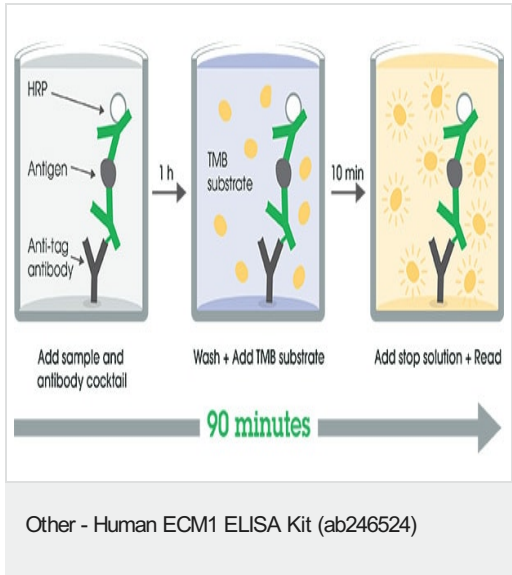
存放说明Store at +4°C. Please refer to protocols.

组件	1 x 96 tests
10X Human ECM1 Capture Antibody	1 x 600µl
10X Human ECM1 Detector Antibody	1 x 600µl
10X Wash Buffer PT (ab206977)	1 x 20ml
Antibody Diluent 4BI	1 x 6ml
Human ECM1 Lyophilized Recombinant Protein	2 vials
Plate Seals	1 unit
Sample Diluent NS (ab193972)	1 x 50ml
SimpleStep Pre-Coated 96-Well Microplate (ab206978)	1 unit
Stop Solution	1 x 12ml
TMB Development Solution	1 x 12ml

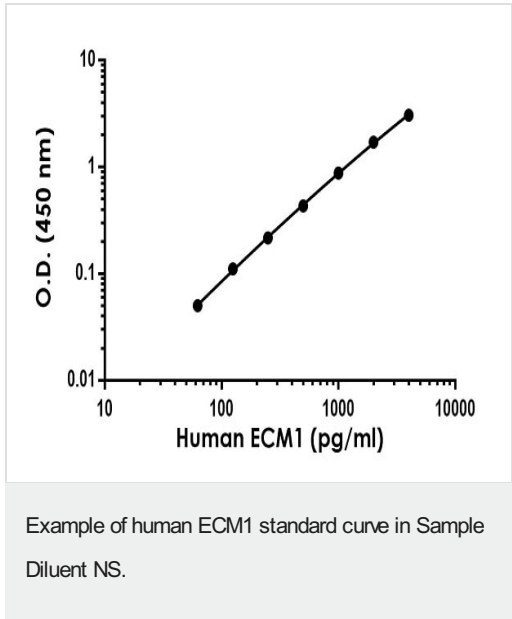
功能Involved in endochondral bone formation as negative regulator of bone mineralization. Stimulates

	the proliferation of endothelial cells and promotes angiogenesis. Inhibits MMP9 proteolytic activity.
组织特异性	Expressed in breast cancer tissues. Little or no expression observed in normal breast tissues. Expressed in skin; wide expression is observed throughout the dermis with minimal expression in the epidermis.
疾病相关	Defects in ECM1 are the cause of lipoid proteinosis (LiP) [MIM:247100]; also known as lipoid proteinosis of Urbach and Wiethe or hyalinosis cutis et mucosae. LiP is a rare autosomal recessive disorder characterized by generalized thickening of skin, mucosae and certain viscera. Classical features include beaded eyelid papules and laryngeal infiltration leading to hoarseness. Histologically, there is widespread deposition of hyaline material and disruption/reduplication of basement membrane.
细胞定位	Secreted > extracellular space > extracellular matrix.

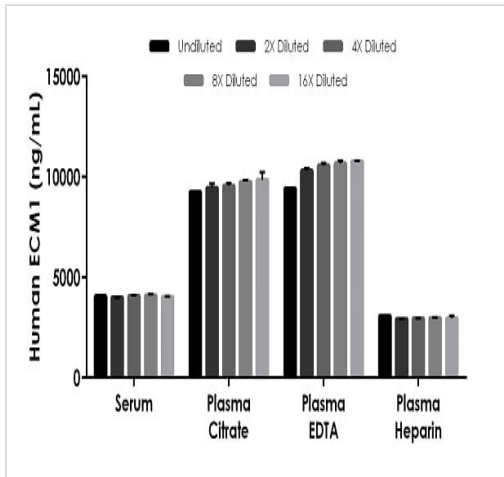
图片



SimpleStep ELISA technology allows the formation of the antibody-antigen complex in one single step, reducing assay time to 90 minutes. Add samples or standards and antibody mix to wells all at once, incubate, wash, and add your final substrate. See protocol for a detailed step-by-step guide.

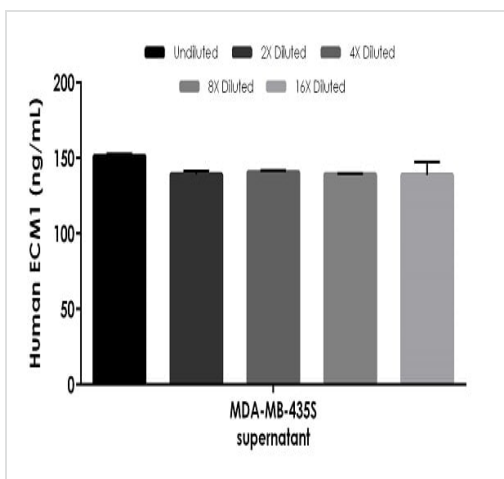


The ECM1 standard curve was prepared as described in Section 10. Raw data values are shown in the table. Background-subtracted data values (mean +/- SD) are graphed.



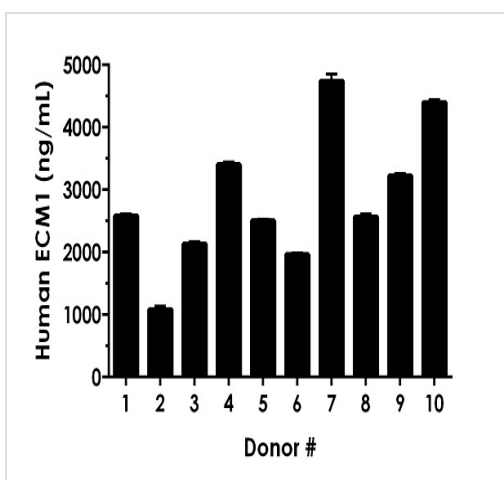
Interpolated concentrations of native ECM1 in human serum, plasma.

The concentrations of ECM1 were measured in duplicates, interpolated from the ECM1 standard curves and corrected for sample dilution. Undiluted samples are as follows: serum 1:1000, plasma (citrate) 1:2000, plasma (EDTA) 1:2000, and plasma (heparin) 1:1000. The interpolated dilution factor corrected values are plotted (mean \pm SD, $n=2$). The mean ECM1 concentration was determined to be 4064 ng/mL in serum, 9512 ng/mL in plasma (citrate), 10307 ng/mL in plasma (EDTA), and 2989 ng/ml in plasma heparin.



Interpolated concentrations of native ECM1 in cell culture supernatant.

The concentrations of ECM1 were measured in duplicate, interpolated from the ECM1 standard curves and corrected for sample dilution. Undiluted samples are as follows: MDA-MB-435S supernatant 2%. The interpolated dilution factor corrected values are plotted (mean \pm SD, $n=2$). The mean ECM1 concentration was determined to be 141 ng/mL.



Serum from ten individual healthy human female donors was measured in duplicate.

Interpolated dilution factor corrected values are plotted (mean \pm SD, $n=2$). The mean ECM1 concentration was determined to be 2862 ng/mL with a range of 1028 – 4859 ng/mL.

Powered by
recombinant antibodies



Research with confidence
Consistent and reproducible results



Long-term and scalable supply
Recombinant technology



Success from the first experiment
Confirmed specificity



Ethical standards compliant
Animal-free production

Sandwich ELISA - Human ECM1 ELISA Kit
(ab246524)

To learn more about the advantages of recombinant antibodies see [here](#).

Please note: All products are "FOR RESEARCH USE ONLY. NOT FOR USE IN DIAGNOSTIC PROCEDURES"

Our Abpromise to you: Quality guaranteed and expert technical support

- Replacement or refund for products not performing as stated on the datasheet
- Valid for 12 months from date of delivery
- Response to your inquiry within 24 hours
- We provide support in Chinese, English, French, German, Japanese and Spanish
- Extensive multi-media technical resources to help you
- We investigate all quality concerns to ensure our products perform to the highest standards

If the product does not perform as described on this datasheet, we will offer a refund or replacement. For full details of the Abpromise, please visit <https://www.abcam.cn/abpromise> or contact our technical team.

Terms and conditions

- Guarantee only valid for products bought direct from Abcam or one of our authorized distributors