

Human DKK1 ELISA Kit (Dickkopf-1) ab100501

[4 References](#) [2 图像](#)

概述

产品名称	人DKK1 ELISA试剂盒(Dickkopf-1)
检测方法	Colorimetric
样品类型	Cell culture supernatant, Serum, Plasma
检测类型	Sandwich (quantitative)
灵敏度	< 100 pg/ml
范围	122.9 pg/ml - 30000 pg/ml
回收率	90 %

特定样本回收率

样品类型	平均%	范围
Cell culture supernatant	108.3	93% - 123%
Serum	92.3	62% - 130%
Plasma	72.8	59% - 110%

实验步骤 Multiple steps standard assay

种属反应性 与反应: Human

产品概述 Abcam's DKK1 (Dickkopf-1) Human ELISA (Enzyme-Linked Immunosorbent Assay) kit is an *in vitro* enzyme-linked immunosorbent assay for the quantitative measurement of Human DKK1 in serum, plasma, and cell culture supernatants.

This assay employs an antibody specific for Human DKK1 coated on a 96-well plate. Standards and samples are pipetted into the wells and DKK1 present in a sample is bound to the wells by the immobilized antibody. The wells are washed and biotinylated anti-Human DKK1 antibody is added. After washing away unbound biotinylated antibody, HRP-conjugated streptavidin is pipetted to the wells. The wells are again washed, a TMB substrate solution is added to the wells and color develops in proportion to the amount of DKK1 bound. The Stop Solution changes the color from blue to yellow, and the intensity of the color is measured at 450 nm.

说明 Optimization may be required with urine samples.

平台 Microplate

性能

存放说明

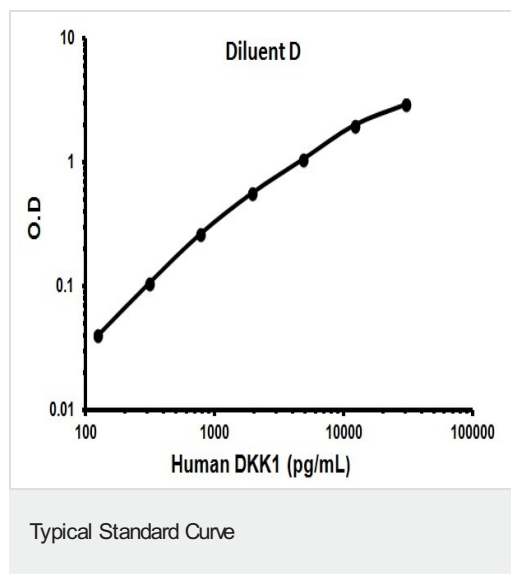
Store at -20°C. Please refer to protocols.

组件	1 x 96 tests
20X Wash Buffer	1 x 25ml
5X Assay Diluent B	1 x 15ml
5X Assay Diluent D	1 x 15ml
700X HRP-Streptavidin Concentrate	1 x 200µl
Biotinylated anti-Human DKK1	2 vials
DKK1 Microplate (12 x 8 wells)	1 unit
Recombinant Human DKK1 Standard (lyophilized)	2 vials
Stop Solution	1 x 8ml
TMB One-Step Substrate Reagent	1 x 12ml

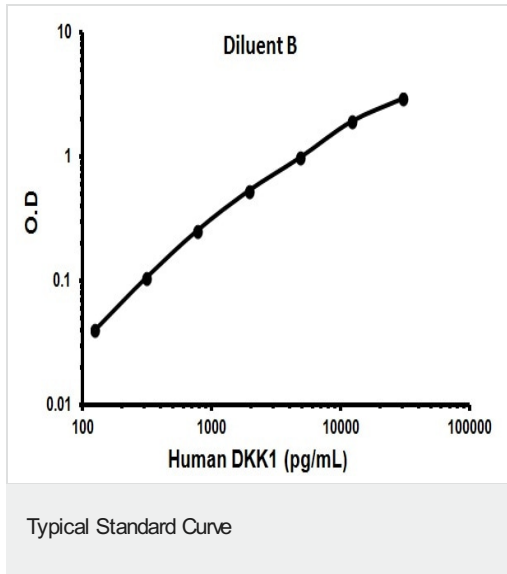
相关性

DKK1 is an inhibitor of the Wnt signaling pathway. Elevated levels of DKK1 in bone marrow plasma and peripheral blood is associated with the presence of osteolytic bone lesions in patients with multiple myeloma.

图片



Representative Standard Curve using ab100501.



Representative Standard Curve using ab100501.

Please note: All products are "FOR RESEARCH USE ONLY. NOT FOR USE IN DIAGNOSTIC PROCEDURES"

Our Abpromise to you: Quality guaranteed and expert technical support

- Replacement or refund for products not performing as stated on the datasheet
- Valid for 12 months from date of delivery
- Response to your inquiry within 24 hours
- We provide support in Chinese, English, French, German, Japanese and Spanish
- Extensive multi-media technical resources to help you
- We investigate all quality concerns to ensure our products perform to the highest standards

If the product does not perform as described on this datasheet, we will offer a refund or replacement. For full details of the Abpromise, please visit <https://www.abcam.cn/abpromise> or contact our technical team.

Terms and conditions

- Guarantee only valid for products bought direct from Abcam or one of our authorized distributors