

Human beta 2 Microglobulin ELISA Kit (B2M) ab99977

★★★★★ 1 Abreviews 1 References 3 图像

概述

产品名称	人beta 2 Microglobulin ELISA试剂盒(B2M)
检测方法	Colorimetric
样品类型	Cell culture supernatant, Serum, Plasma
检测类型	Sandwich (quantitative)
灵敏度	< 6 pg/ml
范围	15.6 pg/ml - 1000 pg/ml
回收率	< 100 %

特定样本回收率

样品类型	平均%	范围
Cell culture supernatant	104.6	93% - 118%
Serum	94.28	80% - 103%
Plasma	95.78	81% - 105%

实验步骤	Multiple steps standard assay
种属反应性	与反应: Human
产品概述	Abcam's beta 2 Microglobulin (B2M) Human ELISA (Enzyme-Linked Immunosorbent Assay) kit is an <i>in vitro</i> enzyme-linked immunosorbent assay for the quantitative measurement of Human beta 2 Microglobulin in serum, plasma and cell culture supernatants.

This assay employs an antibody specific for Human beta 2 Microglobulin coated on a 96-well plate. Standards and samples are pipetted into the wells and beta 2 Microglobulin present in a sample is bound to the wells by the immobilized antibody. The wells are washed and biotinylated anti-Human beta 2 Microglobulin antibody is added. After washing away unbound biotinylated antibody, HRP-conjugated streptavidin is pipetted to the wells. The wells are again washed, a TMB substrate solution is added to the wells and color develops in proportion to the amount of beta 2 Microglobulin bound. The Stop Solution changes the color from blue to yellow, and the intensity of the color is measured at 450 nm.

Get higher sensitivity in only 90 minutes with Human Beta-2-Microglobulin ELISA Kit ([ab181423](#))

from our SimpleStep ELISA® range.

说明 Optimisation may be required with urine samples.

平台 Microplate

性能

存放说明 Store at -20°C. Please refer to protocols.

组件	1 x 96 tests
20X Wash Buffer	1 x 25ml
300X HRP-Streptavidin Concentrate	1 x 200µl
5X Assay Diluent B	1 x 15ml
Assay Diluent A	2 x 30ml
beta 2 Microglobulin Microplate (12 x 8 wells)	1 unit
Biotinylated anti-Human beta 2 Microglobulin	2 vials
Recombinant Human beta 2 Microglobulin Standard (lyophilized)	2 vials
Stop Solution	1 x 8ml
TMB One-Step Substrate Reagent	1 x 12ml

功能 Component of the class I major histocompatibility complex (MHC). Involved in the presentation of peptide antigens to the immune system.

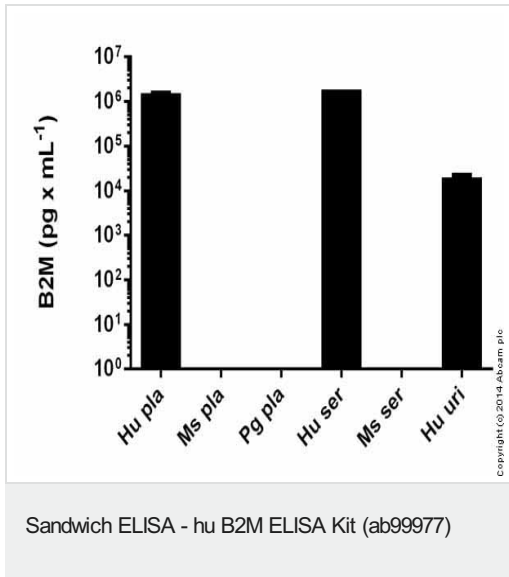
疾病相关 Defects in B2M are the cause of hypercatabolic hypoproteinemia (HYCATHYP) [MIM:241600]. Affected individuals show marked reduction in serum concentrations of immunoglobulin and albumin, probably due to rapid degradation.
Note=Beta-2-microglobulin may adopt the fibrillar configuration of amyloid in certain pathologic states. The capacity to assemble into amyloid fibrils is concentration dependent. Persistently high beta(2)-microglobulin serum levels lead to amyloidosis in patients on long-term hemodialysis.

序列相似性 Belongs to the beta-2-microglobulin family.
Contains 1 Ig-like C1-type (immunoglobulin-like) domain.

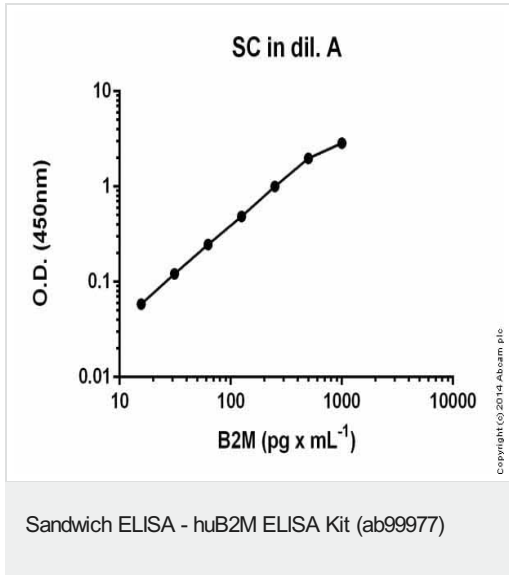
翻译后修饰 Glycation of Ile-21 is observed in long-term hemodialysis patients.

细胞定位 Secreted. Detected in serum and urine.

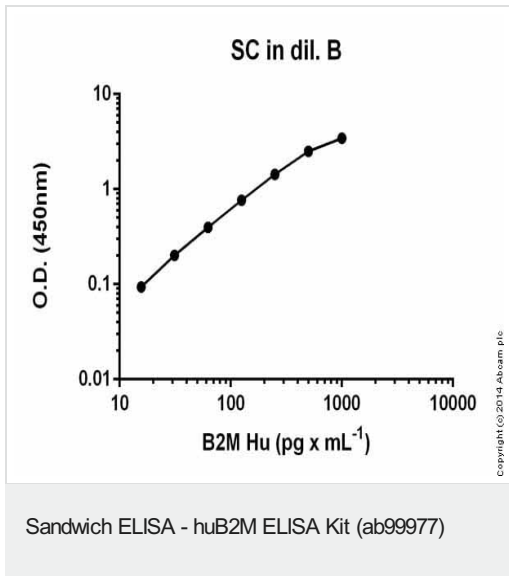
图片



huB2M measured in biofluids showing quantity (pg) per mL of tested sample



Representative Standard Curve using ab99977.



Representative Standard Curve using ab99977.

Please note: All products are "FOR RESEARCH USE ONLY. NOT FOR USE IN DIAGNOSTIC PROCEDURES"

Our Abpromise to you: Quality guaranteed and expert technical support

- Replacement or refund for products not performing as stated on the datasheet
- Valid for 12 months from date of delivery
- Response to your inquiry within 24 hours

- We provide support in Chinese, English, French, German, Japanese and Spanish
- Extensive multi-media technical resources to help you
- We investigate all quality concerns to ensure our products perform to the highest standards

If the product does not perform as described on this datasheet, we will offer a refund or replacement. For full details of the Abpromise, please visit <https://www.abcam.cn/abpromise> or contact our technical team.

Terms and conditions

- Guarantee only valid for products bought direct from Abcam or one of our authorized distributors