

# Human TLE1 knockout MCF7 cell lysate ab269660

## 2 图像

### 概述

产品名称	人TLE1 knockout MCF7 cell裂解物
产品概述	Western blot data indicates that the CRISPR gene edit may have resulted in a truncation of the protein of interest. Please see data images.
Parental Cell Line	MCF7
Organism	Human
Mutation description	Knockout achieved by CRISPR/Cas9; X = 1 bp insertion; Frameshift = 100%
Passage number	<20
Knockout validation	Next Generation Sequencing (NGS)
Reconstitution notes	To use as WB control, resuspend the lyophilizate in 50 µL of LDS* Sample Buffer to have a final concentration of 2 mg/ml. For reducing conditions, we recommend a final concentration of 0.1 M DTT.

*\*Usage of SDS sample buffer is not recommended with these lyophilized lysates.*

### 说明

**Lysate preparation:** Our lysates are made using RIPA buffer to which we add a protease inhibitor cocktail and phosphatase inhibitor cocktail (ratio: 300:100:10). *This means that the protein of interest is denatured.* If you require a native form of the protein please use the live cell version - found [here](#). Please refer to our lysis protocol for further details on how our lysates are prepared.

**User storage instructions:** Lyophilizate may be stored at 4°C. After reconstitution, store at -20°C for short-term storage or -80°C for long-term storage.

Access thousands of knockout cell lysates, generated from commonly used cancer cell lines.

**[See here for more information on knockout cell lysates.](#)**

Abcam has not and does not intend to apply for the REACH Authorisation of customers' uses of products that contain European Authorisation list (Annex XIV) substances.

It is the responsibility of our customers to check the necessity of application of REACH Authorisation, and any other relevant authorisations, for their intended uses.

This product is subject to limited use licenses from The Broad Institute, ERS Genomics Limited and Sigma-Aldrich Co. LLC, and is developed with patented technology. For full details of the licenses and patents please refer to our [limited use license](#) and [patent pages](#).

### 经测试应用

适用于: WB

## 性能

**存放说明** Store at -80°C. Please refer to protocols.

组件	1 kit
ab280535 - Human TLE1 knockout MCF7 cell lysate	1 x 100µg
ab269599 - Human wild-type MCF7 cell lysate	1 x 100µg

**Cell type** epithelial  
**Disease** Adenocarcinoma  
**Gender** Female

## 靶标

**功能** Transcriptional corepressor that binds to a number of transcription factors. Inhibits NF-kappa-B-regulated gene expression. Inhibits the transcriptional activation mediated by FOXA2, and by CTNNB1 and TCF family members in Wnt signaling. The effects of full-length TLE family members may be modulated by association with dominant-negative AES. Unusual function as coactivator for ESRRG.

**组织特异性** In all tissues examined, mostly in brain, liver and muscle.

**序列相似性** Belongs to the WD repeat Groucho/TLE family.  
Contains 6 WD repeats.

**结构域** WD repeat Groucho/TLE family members are characterized by 5 regions, a glutamine-rich Q domain, a glycine/proline-rich GP domain, a central CcN domain, containing a nuclear localization signal, and a serine/proline-rich SP domain. The most highly conserved are the N-terminal Q domain and the C-terminal WD-repeat domain.

**翻译后修饰** Phosphorylated, probably by CDK1. The degree of phosphorylation varies throughout the cell cycle, and is highest at the G2/M transition. Becomes hyperphosphorylated in response to cell differentiation and interaction with HES1 or RUNX1.  
Ubiquitinated by XIAP/BIRC4.

**细胞定位** Nucleus. Nuclear and chromatin-associated, depending on isoforms and phosphorylation status. Hyperphosphorylation decreases the affinity for nuclear components.

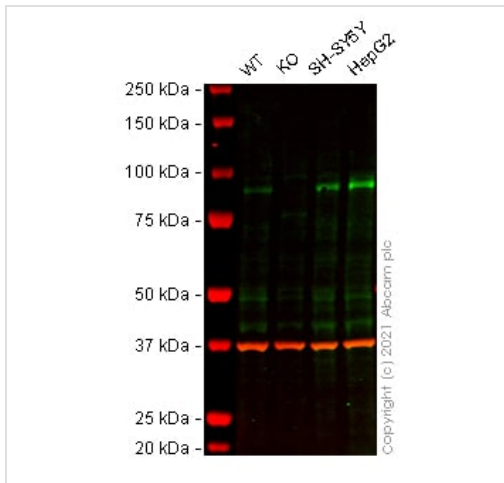
## 应用

**The Abpromise guarantee** **Abpromise™** 承诺保证使用 ab269660 于以下的经测试应用

“应用说明”部分 下显示的仅为推荐的起始稀释度;实际最佳的稀释度/浓度应由使用者检定。

应用	Ab评论	说明
<b>WB</b>		Use at an assay dependent concentration. Predicted molecular weight: 83 kDa. Western blot data indicates that the CRISPR gene edit may have resulted in a truncation of the protein of interest. Please see data images.

图片



Western blot - Human TLE1 knockout MCF7 cell lysate (ab269660)

**Lane 1:** Wild-type MCF7 (Human breast adenocarcinoma cell line) whole cell lysate 20 ug

**Lane 2:** TLE1 knockout MCF7 (Human breast adenocarcinoma cell line) whole cell lysate 20 ug

**Lane 3:** SH-SY5Y (Human neuroblastoma cell line from bone marrow) whole cell lysate 20 ug

**Lane 4:** Hep G2 (Human liver hepatocellular carcinoma cell line) whole cell lysate 20 ug

**Lanes 1 - 4:** Merged signal (red and green). Green - **ab183742** observed at 83 kDa. Red - loading control, **ab8245** (Mouse anti-GAPDH antibody [6C5]) observed at 37 kDa.

**ab183742** was shown to react with TLE 1 in western blot. The band observed in the knockout cell line **ab269498** (knockout cell lysate ab269660) lane below 83 kDa is likely to represent a truncated form. This has not been investigated further. Membranes were blocked in 3 % milk in TBS-T (0.1 % Tween®) before incubation with **ab183742** and **ab8245** (Mouse anti-GAPDH antibody [6C5]) overnight at 4°C at a 1 in 1000 dilution and a 1 in 20000 dilution respectively. Blots were incubated with Goat anti-Rabbit IgG H&L (IRDye® 800CW) preabsorbed (**ab216773**) and Goat anti-Mouse IgG H&L (IRDye® 680RD) preabsorbed (**ab216776**) secondary antibodies at 1 in 20000 dilution for 1 h at room temperature before imaging.



Next Generation Sequencing - Human TLE1 knockout MCF7 cell lysate (ab269660)

Knockout achieved by CRISPR/Cas9; X = 1 bp insertion; Frameshift = 100%

**Please note:** All products are "FOR RESEARCH USE ONLY. NOT FOR USE IN DIAGNOSTIC PROCEDURES"

## **Our Abpromise to you: Quality guaranteed and expert technical support**

---

- Replacement or refund for products not performing as stated on the datasheet
- Valid for 12 months from date of delivery
- Response to your inquiry within 24 hours
  
- We provide support in Chinese, English, French, German, Japanese and Spanish
- Extensive multi-media technical resources to help you
- We investigate all quality concerns to ensure our products perform to the highest standards

If the product does not perform as described on this datasheet, we will offer a refund or replacement. For full details of the Abpromise, please visit <https://www.abcam.cn/abpromise> or contact our technical team.

## **Terms and conditions**

---

- Guarantee only valid for products bought direct from Abcam or one of our authorized distributors