

# Human PSMB10 (MECL1) knockout HeLa cell lysate ab258145

## 2 图像

### 概述

产品名称	人PSMB10 (MECL1) knockout HeLa cell裂解物
产品概述	Knockout cell lysate achieved by CRISPR/Cas9.
Parental Cell Line	HeLa
Organism	Human
Mutation description	Knockout achieved by using CRISPR/Cas9, Homozygous: 1 bp deletion in exon 1.
Passage number	<20
Knockout validation	Sanger Sequencing, Western Blot (WB)
Reconstitution notes	To use as WB control, resuspend the lyophilizate in 50 µL of LDS* Sample Buffer to have a final concentration of 2 mg/ml. For reducing conditions, we recommend a final concentration of 0.1 M DTT.

*\*Usage of SDS sample buffer is not recommended with these lyophilized lysates.*

### 说明

**Lysate preparation:** Our lysates are made using RIPA buffer to which we add a protease inhibitor cocktail and phosphatase inhibitor cocktail (ratio: 300:100:10). *This means that the protein of interest is denatured.* If you require a native form of the protein please use the live cell version - found [here](#). Please refer to our lysis protocol for further details on how our lysates are prepared.

**User storage instructions:** Lyophilizate may be stored at 4°C. After reconstitution, store at -20°C for short-term storage or -80°C for long-term storage.

Access thousands of knockout cell lysates, generated from commonly used cancer cell lines.

**[See here for more information on knockout cell lysates.](#)**

Abcam has not and does not intend to apply for the REACH Authorisation of customers' uses of products that contain European Authorisation list (Annex XIV) substances.

It is the responsibility of our customers to check the necessity of application of REACH Authorisation, and any other relevant authorisations, for their intended uses.

This product is subject to limited use licenses from The Broad Institute and ERS Genomics Limited, and is developed with patented technology. For full details of the limited use licenses and relevant patents please refer to our [limited use license](#) and [patent pages](#).

### 经测试应用

适用于: WB

性能

存放说明 Store at -80°C. Please refer to protocols.

组件	1 kit
ab260477 - Human PSMB10 knockout HeLa cell lysate	1 x 100µg
ab255552 - Human wild-type HeLa cell lysate	1 x 100µg

Cell type	epithelial
Disease	Adenocarcinoma
Gender	Female
STR Analysis	Amelogenin X D5S818: 11, 12 D13S317: 12, 13.3 D7S820: 8, 12 D16S539: 9, 10 vWA: 16, 18 TH01: 7 TPOX: 8, 12 CSF1PO: 9, 10

靶标

功能	The proteasome is a multicatalytic proteinase complex which is characterized by its ability to cleave peptides with Arg, Phe, Tyr, Leu, and Glu adjacent to the leaving group at neutral or slightly basic pH. The proteasome has an ATP-dependent proteolytic activity. This subunit is involved in antigen processing to generate class I binding peptides.
序列相似性	Belongs to the peptidase T1B family.
发展阶段	Highly expressed in immature dendritic cells (at protein level).
翻译后修饰	Autocleaved. The resulting N-terminal Thr residue of the mature subunit is responsible for the nucleophile proteolytic activity.
细胞定位	Cytoplasm. Nucleus.

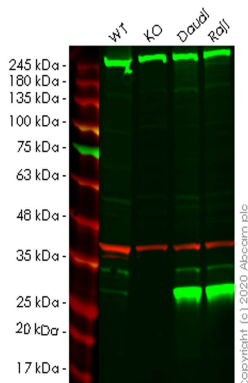
应用

The Abpromise guarantee Abpromise™承诺保证使用ab258145于以下的经测试应用

“应用说明”部分 下显示的仅为推荐的起始稀释度;实际最佳的稀释度/浓度应由使用者检定。

应用	Ab评论	说明
WB		Use at an assay dependent concentration. Predicted molecular weight: 29 kDa.

图片



Western blot - Human PSMB10 knockout HeLa cell lysate (ab258145)

**Lane 1:** Wild-type HeLa cell lysate (20 ug)

**Lane 2:** PSMB10 knockout HeLa cell lysate (20 ug)

**Lane 3:** Daudi cell lysate (20 ug)

**Lane 4:** Raji cell lysate (20 ug)

**ab183506** was shown to specifically react with PSMB10/MECL1 in wild-type HeLa cells. Loss of signal was observed when knockout cell line **ab264923** (knockout cell lysate ab258145) was used. Wild-type and PSMB10/MECL1 knockout samples were subjected to SDS-PAGE. **ab183506** and Anti-GAPDH antibody [6C5] - Loading Control (**ab8245**) were incubated overnight at 4°C at 1 in 1000 dilution and 1 in 20000 dilution respectively. Blots were developed with Goat anti-Rabbit IgG H&L (IRDye® 800CW) preadsorbed (**ab216773**) and Goat anti-Mouse IgG H&L (IRDye® 680RD) preadsorbed (**ab216776**) secondary antibodies at 1 in 20000 dilution for 1 hour at room temperature before imaging.

Mut	CCCCAAGATGCTGAAGCCAGCCCTGGAGCCC-GAGGGGGCTTCTCCTTCGAGAACTGCCA
WT	CCCCAAGATGCTGAAGCCAGCCCTGGAGCCCCGAGGGGGCTTCTCCTTCGAGAACTGCCA

Homozygous: 1 bp deletion in exon 1

Sanger Sequencing - Human PSMB10 knockout HeLa cell lysate (ab258145)

**Please note:** All products are "FOR RESEARCH USE ONLY. NOT FOR USE IN DIAGNOSTIC PROCEDURES"

## Our Abpromise to you: Quality guaranteed and expert technical support

- Replacement or refund for products not performing as stated on the datasheet
- Valid for 12 months from date of delivery
- Response to your inquiry within 24 hours
- We provide support in Chinese, English, French, German, Japanese and Spanish
- Extensive multi-media technical resources to help you
- We investigate all quality concerns to ensure our products perform to the highest standards

If the product does not perform as described on this datasheet, we will offer a refund or replacement. For full details of the Abpromise, please visit <https://www.abcam.cn/abpromise> or contact our technical team.

## **Terms and conditions**

---

- Guarantee only valid for products bought direct from Abcam or one of our authorized distributors