

# Human TNFSF10 (TRAIL) knockout HeLa cell line ab261825

## 1 图像

### 概述

<b>产品名称</b>	人TNFSF10 (TRAIL) knockout HeLa cell line
<b>Parental Cell Line</b>	HeLa
<b>Organism</b>	Human
<b>Mutation description</b>	Knockout achieved by using CRISPR/Cas9, Homozygous: 1 bp insertion in exon 1
<b>Passage number</b>	<20
<b>Knockout validation</b>	Sanger Sequencing
<b>Biosafety level</b>	2
<b>常规说明</b>	<p><b>Recommended control:</b> Human wild-type HeLa cell line (<a href="#">ab255928</a>). Please note a wild-type cell line is not automatically included with a knockout cell line order, if required please add recommended wild-type cell line at no additional cost using the code WILDTYPE-TMTK1.</p> <p><b>Cryopreservation cell medium:</b> Cell Freezing Medium-DMSO Serum free media, contains 8.7% DMSO in MEM supplemented with methyl cellulose.</p> <p><b>Culture medium:</b> DMEM (High Glucose) + 10% FBS</p> <p><b>Initial handling guidelines:</b> Upon arrival, the vial should be stored in liquid nitrogen vapor phase and not at -80°C. Storage at -80°C may result in loss of viability.</p> <ol style="list-style-type: none"> <li>1. Thaw the vial in 37°C water bath for approximately 1-2 minutes.</li> <li>2. Transfer the cell suspension (0.8 mL) to a 15 mL/50 mL conical sterile polypropylene centrifuge tube containing 8.4 mL pre-warmed culture medium, wash vial with an additional 0.8 mL culture medium (total volume 10 mL) to collect remaining cells, and centrifuge at 201 x g (rcf) for 5 minutes at room temperature. 10 mL represents minimum recommended dilution. 20 mL represents maximum recommended dilution.</li> <li>3. Resuspend the cell pellet in 5 mL pre-warmed culture medium and count using a haemocytometer or alternative cell counting method. Based on cell count, seed cells in an appropriate cell culture flask at a density of <math>2 \times 10^4</math> cells/cm<sup>2</sup>. Seeding density is given as a guide only and should be scaled to align with individual lab schedules.</li> <li>4. Incubate the culture at 37°C incubator with 5% CO<sub>2</sub>. Cultures should be monitored daily.</li> </ol> <p><b>Subculture guidelines:</b></p> <p>All seeding densities should be based on cell counts gained by established methods. A guide seeding density of <math>2 \times 10^4</math> cells/cm<sup>2</sup> is recommended.</p> <p>A partial media change 24 hours prior to subculture may be helpful to encourage growth, if required.</p> <p>Cells should be passaged when they have achieved 80-90% confluence.</p>

This product is subject to limited use licenses from The Broad Institute, ERS Genomics Limited and Sigma-Aldrich Co. LLC, and is developed with patented technology. For full details of the licenses and patents please refer to our [limited use license](#) and [patent pages](#).

We will provide viable cells that proliferate on revival.

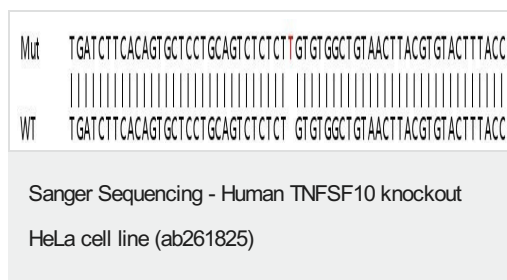
## 性能

<b>Number of cells</b>	1 x 10 <sup>6</sup> cells/vial, 1 mL
<b>Adherent /Suspension</b>	Adherent
<b>Tissue</b>	Cervix
<b>Cell type</b>	epithelial
<b>Disease</b>	Adenocarcinoma
<b>Gender</b>	Female
<b>STR Analysis</b>	Amelogenin X D5S818: 11, 12 D13S317: 12, 13.3 D7S820: 8, 12 D16S539: 9, 10 vWA: 16, 18 TH01: 7 TPOX: 8,12 CSF1PO: 9, 10
<b>Antibiotic resistance</b>	Puromycin 1.00µg/ml
<b>Mycoplasma free</b>	Yes
<b>存放说明</b>	Shipped on Dry Ice. Store in liquid nitrogen.
<b>存储溶液</b>	Constituents: 8.7% Dimethylsulfoxide, 2% Cellulose, methyl ether

## 靶标

<b>功能</b>	Cytokine that binds to TNFRSF10A/TRAILR1, TNFRSF10B/TRAILR2, TNFRSF10C/TRAILR3, TNFRSF10D/TRAILR4 and possibly also to TNFRSF11B/OPG. Induces apoptosis. Its activity may be modulated by binding to the decoy receptors TNFRSF10C/TRAILR3, TNFRSF10D/TRAILR4 and TNFRSF11B/OPG that cannot induce apoptosis.
<b>组织特异性</b>	Widespread; most predominant in spleen, lung and prostate.
<b>序列相似性</b>	Belongs to the tumor necrosis factor family.
<b>细胞定位</b>	Membrane.

## 图片



Homozygous: 1 bp insertion in exon 1.

**Please note:** All products are "FOR RESEARCH USE ONLY. NOT FOR USE IN DIAGNOSTIC PROCEDURES"

## **Our Abpromise to you: Quality guaranteed and expert technical support**

---

- Replacement or refund for products not performing as stated on the datasheet
- Valid for 12 months from date of delivery
- Response to your inquiry within 24 hours
  
- We provide support in Chinese, English, French, German, Japanese and Spanish
- Extensive multi-media technical resources to help you
- We investigate all quality concerns to ensure our products perform to the highest standards

If the product does not perform as described on this datasheet, we will offer a refund or replacement. For full details of the Abpromise, please visit <https://www.abcam.cn/abpromise> or contact our technical team.

## **Terms and conditions**

---

- Guarantee only valid for products bought direct from Abcam or one of our authorized distributors