

# Human MYC (c-Myc) knockout HEK-293T cell line ab256500

★★★★★ [1 Abreviews](#) [6 图像](#)

### 概述

<b>产品名称</b>	人MYC (c-Myc) knockout HEK-293T cell line
<b>Parental Cell Line</b>	HEK293T
<b>Organism</b>	Human
<b>Mutation description</b>	Knockout achieved by using CRISPR/Cas9, Homozygous (4N): 1bp T insertion (2N); 8 bp deletion and C to T insertion (1N); 4 bp deletion in exon 2 (1N)
<b>Passage number</b>	<20
<b>Knockout validation</b>	Immunocytochemistry (ICC), Sanger Sequencing, Western Blot (WB)
<b>经测试应用</b>	<b>适用于:</b> ICC, WB
<b>Biosafety level</b>	2
<b>常规说明</b>	<p><b>Recommended control:</b> Human wild-type HEK293T cell line (<a href="#">ab255449</a>). Please note a wild-type cell line is not automatically included with a knockout cell line order, if required please add recommended wild-type cell line at no additional cost using the code WILDTYPE-TMTK1.</p> <p><b>Cryopreservation cell medium:</b> Cell Freezing Medium-DMSO Serum free media, contains 8.7% DMSO in MEM supplemented with methyl cellulose.</p> <p><b>Culture medium:</b> DMEM (High Glucose) + 10% FBS</p> <p><b>Initial handling guidelines:</b> Upon arrival, the vial should be stored in liquid nitrogen vapor phase and not at -80°C. Storage at -80°C may result in loss of viability.</p> <ol style="list-style-type: none"> <li>1. Thaw the vial in 37°C water bath for approximately 1-2 minutes.</li> <li>2. Transfer the cell suspension (0.8 mL) to a 15 mL/50 mL conical sterile polypropylene centrifuge tube containing 8.4 mL pre-warmed culture medium, wash vial with an additional 0.8 mL culture medium (total volume 10 mL) to collect remaining cells, and centrifuge at 201 x g (rcf) for 5 minutes at room temperature. 10 mL represents minimum recommended dilution. 20 mL represents maximum recommended dilution.</li> <li>3. Resuspend the cell pellet in 5 mL pre-warmed culture medium and count using a haemocytometer or alternative cell counting method. Based on cell count, seed cells in an appropriate cell culture flask at a density of <math>2 \times 10^4</math> cells/cm<sup>2</sup>. Seeding density is given as a guide only and should be scaled to align with individual lab schedules.</li> <li>4. Incubate the culture at 37°C incubator with 5% CO<sub>2</sub>. Cultures should be monitored daily.</li> </ol> <p><b>Subculture guidelines:</b></p> <p>All seeding densities should be based on cell counts gained by established methods. A guide seeding density of <math>2 \times 10^4</math> cells/cm<sup>2</sup> is recommended. A partial media change 24 hours prior to subculture may be helpful to encourage growth, if</p>

required.

Cells should be passaged when they have achieved 80-90% confluence.

This product is subject to limited use licenses from The Broad Institute, ERS Genomics Limited and Sigma-Aldrich Co. LLC, and is developed with patented technology. For full details of the licenses and patents please refer to our [limited use license](#) and [patent pages](#).

We will provide viable cells that proliferate on revival.

## 性能

---

<b>Number of cells</b>	1 x 10 <sup>6</sup> cells/vial, 1 mL
<b>Adherent /Suspension</b>	Adherent
<b>Tissue</b>	Kidney
<b>Cell type</b>	epithelial
<b>STR Analysis</b>	Amelogenin X D5S818: 8, 9 D13S317: 12, 14 D7S820: 11 D16S539: 9, 13 vWA: 16, 19 TH01: 7, 9.3 TPOX: 11 CSF1PO: 11, 12
<b>Mycoplasma free</b>	Yes
<b>存放说明</b>	Shipped on Dry Ice. Store in liquid nitrogen.
<b>存储溶液</b>	Constituents: 8.7% Dimethylsulfoxide, 2% Cellulose, methyl ether

## 靶标

---

<b>功能</b>	Participates in the regulation of gene transcription. Binds DNA in a non-specific manner, yet also specifically recognizes the core sequence 5'-CAC[GA]TG-3'. Seems to activate the transcription of growth-related genes.
<b>疾病相关</b>	Note=Overexpression of MYC is implicated in the etiology of a variety of hematopoietic tumors. Note=A chromosomal aberration involving MYC may be a cause of a form of B-cell chronic lymphocytic leukemia. Translocation t(8;12)(q24;q22) with BTG1. Defects in MYC are a cause of Burkitt lymphoma (BL) [MIM:113970]. A form of undifferentiated malignant lymphoma commonly manifested as a large osteolytic lesion in the jaw or as an abdominal mass. Note=Chromosomal aberrations involving MYC are usually found in Burkitt lymphoma. Translocations t(8;14), t(8;22) or t(2;8) which juxtapose MYC to one of the heavy or light chain immunoglobulin gene loci.
<b>序列相似性</b>	Contains 1 basic helix-loop-helix (bHLH) domain.
<b>翻译后修饰</b>	Phosphorylated by PRKDC. Phosphorylation at Thr-58 and Ser-62 by GSK3 is required for ubiquitination and degradation by the proteasome. Ubiquitinated by the SCF(FBXW7) complex when phosphorylated at Thr-58 and Ser-62, leading to its degradation by the proteasome. In the nucleoplasm, ubiquitination is counteracted by USP28, which interacts with isoform 1 of FBXW7 (FBW7alpha), leading to its deubiquitination and preventing degradation. In the nucleolus, however, ubiquitination is not counteracted by USP28, due to the lack of interaction between isoform 4 of FBXW7 (FBW7gamma) and USP28, explaining the selective MYC degradation in the nucleolus. Also polyubiquitinated by the DCX(TRUSS) complex.
<b>细胞定位</b>	Nucleus > nucleoplasm. Nucleus > nucleolus.
<b>形式</b>	c-Myc is also expressed in the cytoplasm.

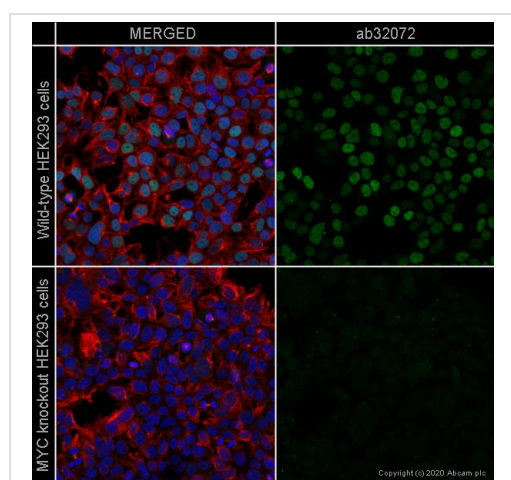
## The Abpromise guarantee

Abpromise™承诺保证使用ab256500于以下的经测试应用

“应用说明”部分 下显示的仅为推荐的起始稀释度;实际最佳的稀释度/浓度应由使用者检定。

应用	Ab评论	说明
ICC		Use at an assay dependent concentration.
WB	★★★★★ (1)	Use at an assay dependent concentration. Predicted molecular weight: 48 kDa.

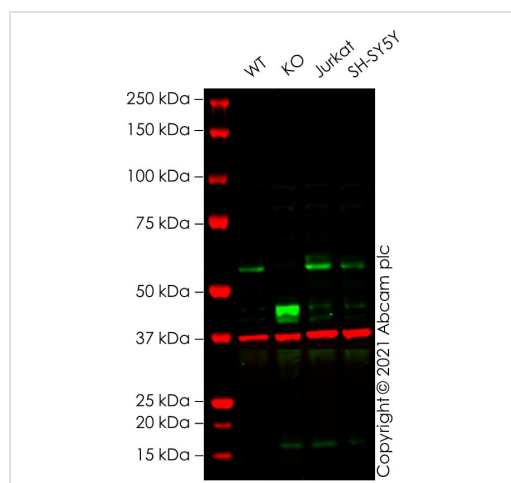
## 图片



Immunocytochemistry/ Immunofluorescence -  
Human MYC (c-Myc) knockout HEK-293T cell line  
(ab256500)

**ab32072** staining MYC in wild-type HEK293 cells (top panel) and MYC knockout HEK293 cells (ab256500) (bottom panel). The cells were fixed with 4% paraformaldehyde (10 min) then permeabilized with 0.1% Triton X-100 for 5 minutes and then blocked with 1% BSA/10% normal goat serum/0.3M glycine in 0.1% PBS-Tween for 1h. The cells were then incubated with **ab32072** at 5µg/ml concentration and **ab7291** (Mouse monoclonal to alpha Tubulin) at 1/1000 dilution overnight at 4°C followed by a further incubation at room temperature for 1h with a goat secondary antibody to rabbit IgG (Alexa Fluor® 488) (**ab150081**) at 2 µg/ml (shown in green) and a goat secondary antibody to mouse IgG (Alexa Fluor® 594) (**ab150120**) at 2 µg/ml (shown in red). Nuclear DNA was labelled in blue with DAPI.

Image was taken with a confocal microscope (Leica-Microsystems TCS SP8).



Western blot - Human MYC (c-Myc) knockout HEK-293T cell line (ab256500)

**All lanes** : Anti-Myc tag antibody [Myc.A7] (**ab18185**) at 1/1000 dilution

**Lane 1** : Wild-type HEK-293T cell lysate

**Lane 2** : MYC knockout HEK-293T cell lysate

**Lane 3** : Jurkat cell lysate

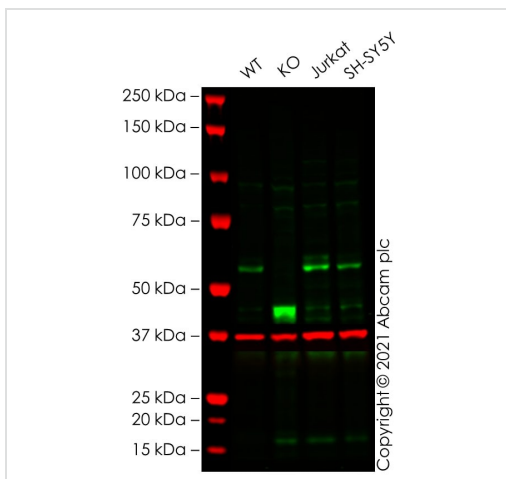
**Lane 4** : SH-SY5Y cell lysate

Lysates/proteins at 20 µg per lane.

Performed under reducing conditions.

**Predicted band size:** 48 kDa

False colour image of Western blot: Anti-Myc tag antibody [Myc.A7] staining at 1/1000 dilution, shown in green; Rabbit Anti-GAPDH antibody [EPR16891] ([ab181602](#)) loading control staining at 1/20000 dilution, shown in red. In Western blot, [ab18185](#) was shown to bind specifically to Myc tag. A band was observed at 57 kDa in wild-type HEK-293T cell lysates with no signal observed at this size in MYC knockout cell line ab256500 (knockout cell lysate [ab263850](#)). The band observed in the knockout lysate lane below 57 kDa is likely to represent a truncated form of Myc tag. This has not been investigated further and the functional properties of the gene product have not been determined. To generate this image, wild-type and MYC knockout HEK-293T cell lysates were analysed. First, samples were run on an SDS-PAGE gel then transferred onto a nitrocellulose membrane. Membranes were blocked in 3 % milk in TBS-0.1 % Tween<sup>®</sup> 20 (TBS-T) before incubation with primary antibodies overnight at 4 °C. Blots were washed four times in TBS-T, incubated with secondary antibodies for 1 h at room temperature, washed again four times then imaged. Secondary antibodies used were Goat anti-Mouse IgG H&L (IRDye<sup>®</sup> 800CW) preabsorbed ([ab216772](#)) and Goat anti-Rabbit IgG H&L (IRDye<sup>®</sup> 680RD) preabsorbed ([ab216777](#)) at 1/20000 dilution.



Western blot - Human MYC (c-Myc) knockout HEK-293T cell line (ab256500)

**All lanes :** Anti-Myc tag antibody [9E10] ([ab32](#)) at 1/200 dilution

**Lane 2 :** MYC knockout HEK-293T cell lysate

**Lane 3 :** Jurkat cell lysate

**Lane 4 :** SH-SY5Y cell lysate

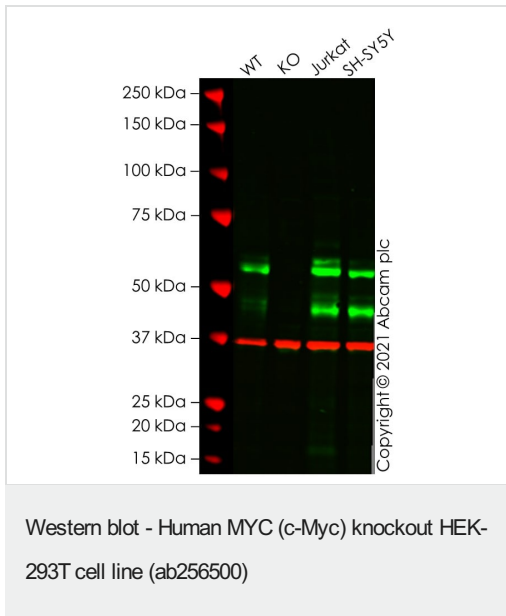
Lysates/proteins at 20 µg per lane.

Performed under reducing conditions.

**Predicted band size:** 48 kDa

False colour image of Western blot: Anti-Myc tag antibody [9E10] staining at 1/200 dilution, shown in green; Rabbit Anti-GAPDH antibody [EPR16891] ([ab181602](#)) loading control staining at 1/20000 dilution, shown in red. In Western blot, [ab32](#) was shown to bind specifically to Myc tag. A band was observed at 57 kDa in wild-type HEK-293T cell lysates with no signal observed at this size

in MYC knockout cell line ab256500 (knockout cell lysate [ab263850](#)). The band observed in the knockout lysate lane below 57 kDa is likely to represent a truncated form of Myc tag. This has not been investigated further and the functional properties of the gene product have not been determined. To generate this image, wild-type and MYC knockout HEK-293T cell lysates were analysed. First, samples were run on an SDS-PAGE gel then transferred onto a nitrocellulose membrane. Membranes were blocked in 3 % milk in TBS-0.1 % Tween<sup>®</sup> 20 (TBS-T) before incubation with primary antibodies overnight at 4 °C. Blots were washed four times in TBS-T, incubated with secondary antibodies for 1 h at room temperature, washed again four times then imaged. Secondary antibodies used were Goat anti-Mouse IgG H&L (IRDye<sup>®</sup> 800CW) preabsorbed ([ab216772](#)) and Goat anti-Rabbit IgG H&L (IRDye<sup>®</sup> 680RD) preabsorbed ([ab216777](#)) at 1/20000 dilution.



**All lanes :** Anti-c-Myc antibody [Y69] - ChIP Grade ([ab32072](#)) at 1/1000 dilution

**Lane 1 :** Wild-type HEK-293T cell lysate

**Lane 2 :** MYC knockout HEK-293T cell lysate

**Lane 3 :** Jurkat cell lysate

**Lane 4 :** SH-SY5Y cell lysate

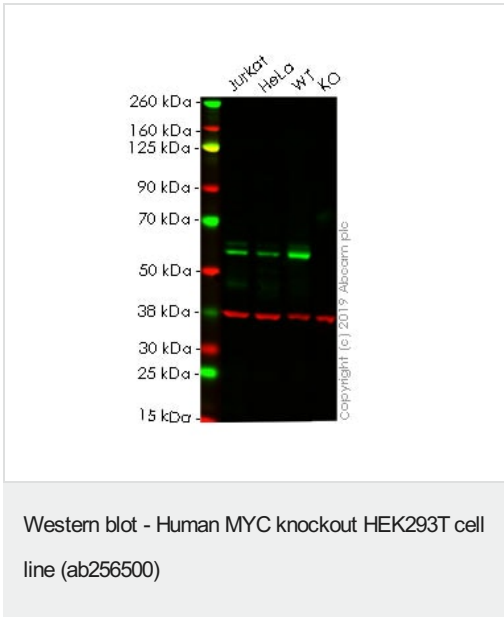
Lysates/proteins at 20 µg per lane.

Performed under reducing conditions.

**Predicted band size:** 48 kDa

False colour image of Western blot: Anti-c-Myc antibody [Y69] staining at 1/1000 dilution, shown in green; Mouse anti-GAPDH antibody [6C5] ([ab8245](#)) loading control staining at 1/20000 dilution, shown in red. In Western blot, [ab32072](#) was shown to bind specifically to c-Myc. A band was observed at 45/57 kDa in wild-type HEK-293T cell lysates with no signal observed at this size in MYC knockout cell line ab256500 (knockout cell lysate [ab263850](#)). The band observed in the knockout lysate lane below 45/57 kDa is likely to represent a truncated form of c-Myc. This has not been investigated further and the functional properties of the gene product have not been determined. To generate this image, wild-

type and MYC knockout HEK-293T cell lysates were analysed. First, samples were run on an SDS-PAGE gel then transferred onto a nitrocellulose membrane. Membranes were blocked in 5 % milk in TBS-0.1 % Tween<sup>®</sup> 20 (TBS-T) before incubation with primary antibodies overnight at 4 °C. Blots were washed four times in TBS-T, incubated with secondary antibodies for 1 h at room temperature, washed again four times then imaged. Secondary antibodies used were Goat anti-Rabbit IgG H&L (IRDye<sup>®</sup> 800CW) preabsorbed (**ab216773**) and Goat anti-Mouse IgG H&L (IRDye<sup>®</sup> 680RD) preabsorbed (**ab216776**) at 1/20000 dilution.



**All lanes :** Anti-c-Myc antibody [Y69] - ChIP Grade (**ab32072**) at 1/1000 dilution

**Lane 1 :** Jurkat cell lysate

**Lane 2 :** HeLa cell lysate

**Lane 3 :** Wild-type HEK-293T cell lysate

**Lane 4 :** MYC knockout HEK-293T cell lysate

Lysates/proteins at 20 µg per lane.

### Secondary

**All lanes :** Goat anti-Rabbit IgG H&L (IRDye<sup>®</sup> 800CW) preadsorbed (**ab216773**) at 1/20000 dilution

**Predicted band size:** 48 kDa

**Additional bands at:** 37 kDa (possible Loading Control)

**Lanes 1 -4:** Merged signal (red and green). Green - **ab32072** observed at 57 kDa. Red - loading control, **ab8245** observed at 37 kDa.

**ab32072** was shown to react with MYC in wild-type HEK-293T cells. Loss of signal was observed when knockout cell line ab256500 (knockout cell lysate **ab263850**) was used. Wild-type and MYC knockout samples were subjected to SDS-PAGE. **ab32072** and Anti-GAPDH antibody [6C5] - Loading Control (**ab8245**) were incubated overnight at 4°C at 1 in 1000 dilution and 1 in 20000 dilution respectively. Blots were developed with Goat anti-Rabbit IgG H&L (IRDye<sup>®</sup> 800CW) preadsorbed (**ab216773**) and Goat anti-Mouse IgG H&L (IRDye<sup>®</sup> 680RD) preadsorbed (**ab216776**) secondary antibodies at 1 in 20000 dilution for 1 hour at room temperature before imaging.

Mut	TCACCAACAGGAACTCTATGACCTCGACTACGACTCGGTGCAGCCGTATTTCTACTGCGAC
WT	TCACCAACAGGAA CTATGACCTCGACTACGACTCGGTGCAGCCGTATTTCTACTGCGAC

Sanger Sequencing - Human MYC knockout  
HEK293T cell line (ab256500)

Homozygous: 1 bp insertion in exon 2

**Please note:** All products are "FOR RESEARCH USE ONLY. NOT FOR USE IN DIAGNOSTIC PROCEDURES"

### Our Abpromise to you: Quality guaranteed and expert technical support

---

- Replacement or refund for products not performing as stated on the datasheet
- Valid for 12 months from date of delivery
- Response to your inquiry within 24 hours
- We provide support in Chinese, English, French, German, Japanese and Spanish
- Extensive multi-media technical resources to help you
- We investigate all quality concerns to ensure our products perform to the highest standards

If the product does not perform as described on this datasheet, we will offer a refund or replacement. For full details of the Abpromise, please visit <https://www.abcam.cn/abpromise> or contact our technical team.

### Terms and conditions

---

- Guarantee only valid for products bought direct from Abcam or one of our authorized distributors