

Human MCL1 knockout HEK-293T cell line ab266838

3 图像

概述

产品名称	人MCL1 knockout HEK-293T cell line
Parental Cell Line	HEK293T
Organism	Human
Mutation description	Knockout achieved by using CRISPR/Cas9, 1 bp deletion in exon 1 and 7 bp insertion in exon 1
Passage number	<20
Knockout validation	Sanger Sequencing, Western Blot (WB)
经测试应用	适用于: WB
Biosafety level	2
常规说明	<p>Recommended control: Human wild-type HEK293T cell line (ab255449). Please note a wild-type cell line is not automatically included with a knockout cell line order, if required please add recommended wild-type cell line at no additional cost using the code WILDTYPE-TMTK1.</p> <p>Cryopreservation cell medium: Cell Freezing Medium-DMSO Serum free media, contains 8.7% DMSO in MEM supplemented with methyl cellulose.</p> <p>Culture medium: DMEM (High Glucose) + 10% FBS</p> <p>Initial handling guidelines: Upon arrival, the vial should be stored in liquid nitrogen vapor phase and not at -80°C. Storage at -80°C may result in loss of viability.</p> <ol style="list-style-type: none"> 1. Thaw the vial in 37°C water bath for approximately 1-2 minutes. 2. Transfer the cell suspension (0.8 mL) to a 15 mL/50 mL conical sterile polypropylene centrifuge tube containing 8.4 mL pre-warmed culture medium, wash vial with an additional 0.8 mL culture medium (total volume 10 mL) to collect remaining cells, and centrifuge at 201 x g (rcf) for 5 minutes at room temperature. 10 mL represents minimum recommended dilution. 20 mL represents maximum recommended dilution. 3. Resuspend the cell pellet in 5 mL pre-warmed culture medium and count using a haemocytometer or alternative cell counting method. Based on cell count, seed cells in an appropriate cell culture flask at a density of 2×10^4 cells/cm². Seeding density is given as a guide only and should be scaled to align with individual lab schedules. 4. Incubate the culture at 37°C incubator with 5% CO₂. Cultures should be monitored daily. <p>Subculture guidelines:</p> <p>All seeding densities should be based on cell counts gained by established methods. A guide seeding density of 2×10^4 cells/cm² is recommended.</p> <p>A partial media change 24 hours prior to subculture may be helpful to encourage growth, if required.</p>

Cells should be passaged when they have achieved 80-90% confluence.

This product is subject to limited use licenses from The Broad Institute, ERS Genomics Limited and Sigma-Aldrich Co. LLC, and is developed with patented technology. For full details of the licenses and patents please refer to our [limited use license](#) and [patent pages](#).

We will provide viable cells that proliferate on revival.

性能

Number of cells	1 x 10 ⁶ cells/vial, 1 mL
Adherent /Suspension	Adherent
Tissue	Kidney
Cell type	epithelial
STR Analysis	Amelogenin X D5S818: 8, 9 D13S317: 12, 14 D7S820: 11 D16S539: 9, 13 vWA: 16, 19 TH01: 7, 9.3 TPOX: 11 CSF1PO: 11, 12
Antibiotic resistance	Puromycin 1.00µg/ml
Mycoplasma free	Yes
存放说明	Shipped on Dry Ice. Store in liquid nitrogen.
存储溶液	Constituents: 8.7% Dimethylsulfoxide, 2% Cellulose, methyl ether

靶标

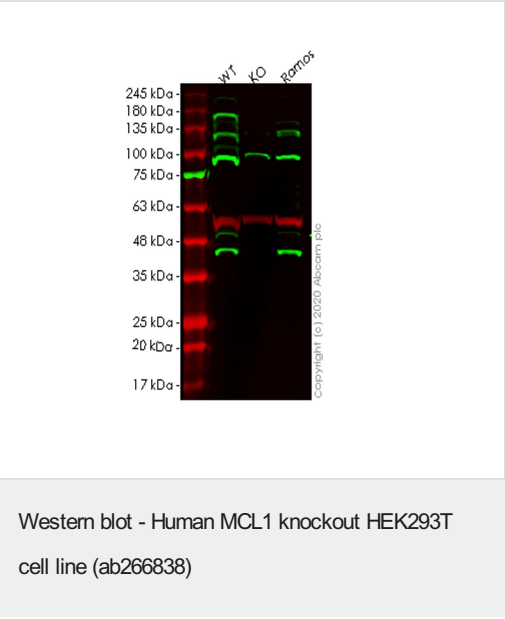
功能	Involved in the regulation of apoptosis versus cell survival, and in the maintenance of viability but not of proliferation. Mediates its effects by interactions with a number of other regulators of apoptosis. Isoform 1 inhibits apoptosis. Isoform 2 promotes apoptosis.
序列相似性	Belongs to the Bcl-2 family.
翻译后修饰	Cleaved by CASP3 during apoptosis. In intact cells cleavage occurs preferentially after Asp-127, yielding a pro-apoptotic 28 kDa C-terminal fragment. Rapidly degraded in the absence of phosphorylation on Thr-163 in the PEST region. Phosphorylated on Thr-163. Treatment with taxol or okadaic acid induces phosphorylation on additional sites.
细胞定位	Membrane. Cytoplasm. Mitochondrion. Nucleus > nucleoplasm. Cytoplasmic, associated with mitochondria.

应用

The Abpromise guarantee **Abpromise™承诺保证使用ab266838于以下的经测试应用**

“应用说明”部分 下显示的仅为推荐的起始稀释度;实际最佳的稀释度/浓度应由使用者检定。

应用	Ab评论	说明
WB		Use at an assay dependent concentration. Predicted molecular weight: 37 kDa.



All lanes : Anti-MCL1 antibody [Y37] ([ab32087](#)) at 1/1000 dilution

Lane 1 : Wild-type HEK293T cell lysate

Lane 2 : MCL1 knockout HEK293T cell lysate

Lane 3 : Ramos cell lysate

Lysates/proteins at 20 µg per lane.

Secondary

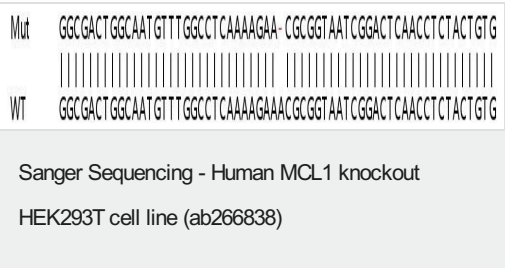
All lanes : Goat anti-Rabbit IgG H&L (IRDye® 800CW) preadsorbed ([ab216773](#)) at 1/10000 dilution

Predicted band size: 37 kDa

Observed band size: 37 kDa

Lanes 1-3: Merged signal (red and green). Green - [ab32087](#) observed at 37 kDa. Red - loading control [ab7291](#) observed at 50 kDa.

[ab32087](#) Anti-MCL1 antibody [Y37] was shown to specifically react with MCL1 in wild-type HEK293T cells. Loss of signal was observed when knockout cell line ab266838 (knockout cell lysate [ab256986](#)) was used. Wild-type and MCL1 knockout samples were subjected to SDS-PAGE. [ab32087](#) and Anti-alpha Tubulin antibody [DM1A] - Loading Control ([ab7291](#)) were incubated overnight at 4°C at 1 in 1000 dilution and 1 in 20000 dilution respectively. Blots were developed with Goat anti-Rabbit IgG H&L (IRDye® 800CW) preadsorbed ([ab216773](#)) and Goat anti-Mouse IgG H&L (IRDye® 680RD) preadsorbed ([ab216776](#)) secondary antibodies at 1 in 20000 dilution for 1 hour at room temperature before imaging.



Allele-1: 1 bp deletion in exon 1

Mut	GGCGACTGGCAATGTTTGGCCTCAAAAGAAACGGGTAAACGCGGTAAATCGGACTCAACCTC
WT	GGCGACTGGCAATGTTTGGCCTCAAAAGAAACGCGGTAAATCGGACTCAACCTC
Sanger Sequencing - Human MCL1 knockout	
HEK293T cell line (ab266838)	

Allele-2: 7 bp insertion in exon 1.

Please note: All products are "FOR RESEARCH USE ONLY. NOT FOR USE IN DIAGNOSTIC PROCEDURES"

Our Abpromise to you: Quality guaranteed and expert technical support

- Replacement or refund for products not performing as stated on the datasheet
- Valid for 12 months from date of delivery
- Response to your inquiry within 24 hours
- We provide support in Chinese, English, French, German, Japanese and Spanish
- Extensive multi-media technical resources to help you
- We investigate all quality concerns to ensure our products perform to the highest standards

If the product does not perform as described on this datasheet, we will offer a refund or replacement. For full details of the Abpromise, please visit <https://www.abcam.cn/abpromise> or contact our technical team.

Terms and conditions

- Guarantee only valid for products bought direct from Abcam or one of our authorized distributors