

Human LMNB1 (Lamin B1) knockout HeLa cell line ab255404

4 图像

概述

产品名称	人LMNB1 (Lamin B1) knockout HeLa cell line
Parental Cell Line	HeLa
Organism	Human
Mutation description	Knockout achieved by using CRISPR/Cas9, 2 bp deletion in exon 1 and 2 bp insertion in exon 1
Passage number	<20
Knockout validation	Sanger Sequencing, Western Blot (WB)
经测试应用	适用于: WB
Biosafety level	2
常规说明	<p>Recommended control: Human wild-type HeLa cell line (ab255448). Please note a wild-type cell line is not automatically included with a knockout cell line order, if required please add recommended wild-type cell line at no additional cost using the code WILDTYPE-TMTK1.</p> <p>Cryopreservation cell medium: Cell Freezing Medium-DMSO Serum free media, contains 8.7% DMSO in MEM supplemented with methyl cellulose.</p> <p>Culture medium: DMEM (High Glucose) + 10% FBS</p> <p>Initial handling guidelines: Upon arrival, the vial should be stored in liquid nitrogen vapor phase and not at -80°C. Storage at -80°C may result in loss of viability.</p> <ol style="list-style-type: none"> 1. Thaw the vial in 37°C water bath for approximately 1-2 minutes. 2. Transfer the cell suspension (0.8 mL) to a 15 mL/50 mL conical sterile polypropylene centrifuge tube containing 8.4 mL pre-warmed culture medium, wash vial with an additional 0.8 mL culture medium (total volume 10 mL) to collect remaining cells, and centrifuge at 201 x g (rcf) for 5 minutes at room temperature. 10 mL represents minimum recommended dilution. 20 mL represents maximum recommended dilution. 3. Resuspend the cell pellet in 5 mL pre-warmed culture medium and count using a haemocytometer or alternative cell counting method. Based on cell count, seed cells in an appropriate cell culture flask at a density of 2×10^4 cells/cm². Seeding density is given as a guide only and should be scaled to align with individual lab schedules. 4. Incubate the culture at 37°C incubator with 5% CO₂. Cultures should be monitored daily. <p>Subculture guidelines:</p> <p>All seeding densities should be based on cell counts gained by established methods. A guide seeding density of 2×10^4 cells/cm² is recommended. A partial media change 24 hours prior to subculture may be helpful to encourage growth, if required.</p>

Cells should be passaged when they have achieved 80-90% confluence.

This product is subject to limited use licenses from The Broad Institute, ERS Genomics Limited and Sigma-Aldrich Co. LLC, and is developed with patented technology. For full details of the licenses and patents please refer to our [limited use license](#) and [patent pages](#).

We will provide viable cells that proliferate on revival.

性能

Number of cells	1 x 10 ⁶ cells/vial, 1 mL
Adherent /Suspension	Adherent
Tissue	Cervix
Cell type	epithelial
Disease	Adenocarcinoma
Gender	Female
STR Analysis	Amelogenin X D5S818: 11, 12 D13S317: 12, 13.3 D7S820: 8, 12 D16S539: 9, 10 WWA: 16, 18 TH01: 7 TPOX: 8, 12 CSF1PO: 9, 10
Mycoplasma free	Yes
存放说明	Shipped on Dry Ice. Store in liquid nitrogen.
存储溶液	Constituents: 8.7% Dimethylsulfoxide, 2% Cellulose, methyl ether

靶标

功能	Lamins are components of the nuclear lamina, a fibrous layer on the nucleoplasmic side of the inner nuclear membrane, which is thought to provide a framework for the nuclear envelope and may also interact with chromatin.
疾病相关	Defects in LMNB1 are the cause of leukodystrophy demyelinating autosomal dominant adult-onset (ADLD) [MIM:169500]. ADLD is a slowly progressive and fatal demyelinating leukodystrophy, presenting in the fourth or fifth decade of life. Clinically characterized by early autonomic abnormalities, pyramidal and cerebellar dysfunction, and symmetric demyelination of the CNS. It differs from multiple sclerosis and other demyelinating disorders in that neuropathology shows preservation of oligodendroglia in the presence of subtotal demyelination and lack of astrogliosis.
序列相似性	Belongs to the intermediate filament family.
翻译后修饰	B-type lamins undergo a series of modifications, such as farnesylation and phosphorylation. Increased phosphorylation of the lamins occurs before envelope disintegration and probably plays a role in regulating lamin associations.
细胞定位	Nucleus inner membrane.

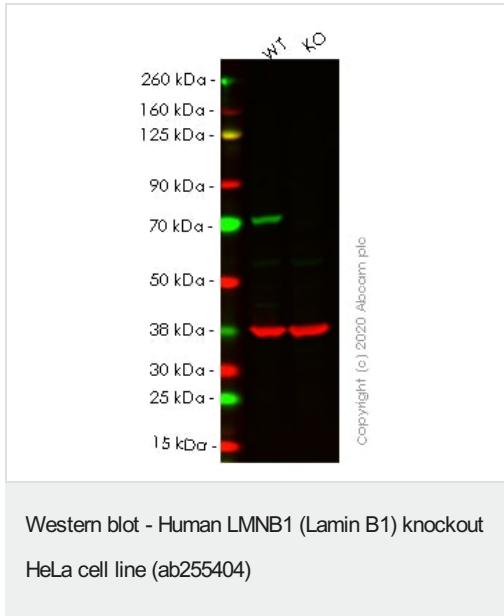
应用

The Abpromise guarantee **Abpromise™**承诺保证使用ab255404于以下的经测试应用

“应用说明”部分 下显示的仅为推荐的起始稀释度;实际最佳的稀释度/浓度应由使用者检定。

应用	Ab评论	说明
WB		Use at an assay dependent concentration. Predicted molecular weight: 66 kDa.

图片



All lanes : Anti-Lamin B1 antibody [EPR22165-121] ([ab229025](#)) at 1/1000 dilution

Lane 1 : Wild-type HeLa cell lysate

Lane 2 : LMNB1 knockout HeLa cell lysate

Lysates/proteins at 20 µg per lane.

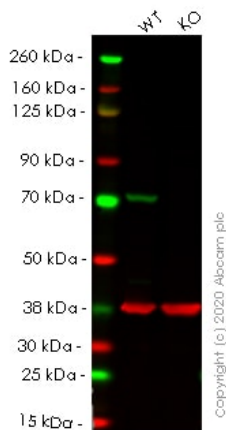
Performed under reducing conditions.

Predicted band size: 66 kDa

Observed band size: 66-70 kDa

Lanes 1-2: Merged signal (red and green). Green - [ab229025](#) observed at 66-70 kDa. Red - Anti-GAPDH antibody [6C5] - Loading Control ([ab8245](#)) observed at 37 kDa.

[ab229025](#) was shown to react with LMNB1 in wild-type HeLa cells in western blot. Loss of signal was observed when knockout cell line ab255404 (knockout cell lysate [ab263825](#)) was used. Wild-type HeLa and LMNB1 knockout HeLa cell lysates were subjected to SDS-PAGE. Membrane was blocked for 1 hour at room temperature in 0.1% TBST with 3% non-fat dried milk. [ab229025](#) and Anti-GAPDH antibody [6C5] - Loading Control ([ab8245](#)) overnight at 4°C at a 1 in 1000 dilution and a 1 in 20000 dilution respectively. Blots were developed with Goat anti-Rabbit IgG H&L (IRDye®800CW) preadsorbed ([ab216773](#)) and Goat anti-Mouse IgG H&L (IRDye®680RD) preadsorbed ([ab216776](#)) secondary antibodies at 1 in 20000 dilution for 1 hour at room temperature before imaging.



Western blot - Human LMNB1 (Lamin B1) knockout HeLa cell line (ab255404)

All lanes : Anti-Lamin B1 antibody [EPR8985(B)] - Nuclear Envelope Marker (**ab133741**) at 1/1000 dilution

Lane 1 : Wild-type HeLa cell lysate

Lane 2 : LMNB1 knockout HeLa cell lysate

Lysates/proteins at 20 µg per lane.

Performed under reducing conditions.

Predicted band size: 66 kDa

Observed band size: 66-70 kDa

Lanes 1- 2: Merged signal (red and green). Green - **ab133741** observed at 66-70 kDa. Red - Anti-GAPDH antibody [6C5] - Loading Control (**ab8245**) observed at 37 kDa.

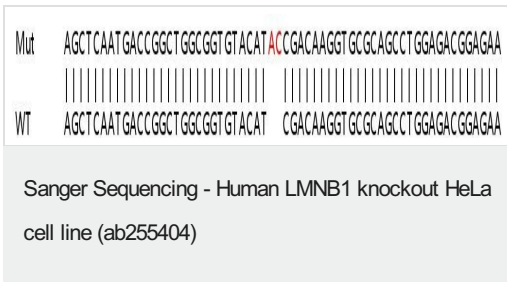
ab133741 was shown to react with LMNB1 in wild-type HeLa cells in western blot. Loss of signal was observed when knockout cell line ab255404 (knockout cell lysate **ab263825**) was used. Wild-type HeLa and LMNB1 knockout HeLa cell lysates were subjected to SDS-PAGE. Membrane was blocked for 1 hour at room temperature in 0.1% TBST with 3% non-fat dried milk. **ab133741** and Anti-GAPDH antibody [6C5] - Loading Control (**ab8245**) overnight at 4°C at a 1 in 1000 dilution and a 1 in 20000 dilution respectively. Blots were developed with Goat anti-Rabbit IgG H&L (IRDye®800CW) preadsorbed (**ab216773**) and Goat anti-Mouse IgG H&L (IRDye®680RD) preadsorbed (**ab216776**) secondary antibodies at 1 in 20000 dilution for 1 hour at room temperature before imaging.

```

Mut  AGCTCAATGACCGGCTGGCGGTGTACAT--ACAAGGTGCGCAGCCTGGAGACGGAGAACA
      |||
WT   AGCTCAATGACCGGCTGGCGGTGTACATCGACAAGGTGCGCAGCCTGGAGACGGAGAACA
  
```

Sanger Sequencing - Human LMNB1 knockout HeLa cell line (ab255404)

Allele-1: 2 bp deletion in exon 1.



Allele-2: 2 bp insertion in exon 1.

Please note: All products are "FOR RESEARCH USE ONLY. NOT FOR USE IN DIAGNOSTIC PROCEDURES"

Our Abpromise to you: Quality guaranteed and expert technical support

- Replacement or refund for products not performing as stated on the datasheet
- Valid for 12 months from date of delivery
- Response to your inquiry within 24 hours
- We provide support in Chinese, English, French, German, Japanese and Spanish
- Extensive multi-media technical resources to help you
- We investigate all quality concerns to ensure our products perform to the highest standards

If the product does not perform as described on this datasheet, we will offer a refund or replacement. For full details of the Abpromise, please visit <https://www.abcam.cn/abpromise> or contact our technical team.

Terms and conditions

- Guarantee only valid for products bought direct from Abcam or one of our authorized distributors