

Human GRHPR knockout HEK-293T cell line ab266129

1 图像

概述

产品名称	人GRHPR knockout HEK-293T cell line
Parental Cell Line	HEK293T
Organism	Human
Mutation description	Knockout achieved by using CRISPR/Cas9, Homozygous: 29 bp deletion in exon 1
Passage number	<20
Knockout validation	Sanger Sequencing
Biosafety level	2
常规说明	<p>Recommended control: Human wild-type HEK293T cell line (ab255449). Please note a wild-type cell line is not automatically included with a knockout cell line order, if required please add recommended wild-type cell line at no additional cost using the code WILDTYPE-TMTK1.</p> <p>Cryopreservation cell medium: Cell Freezing Medium-DMSO Serum free media, contains 8.7% DMSO in MEM supplemented with methyl cellulose.</p> <p>Culture medium: DMEM (High Glucose) + 10% FBS</p> <p>Initial handling guidelines: Upon arrival, the vial should be stored in liquid nitrogen vapor phase and not at -80°C. Storage at -80°C may result in loss of viability.</p> <ol style="list-style-type: none"> 1. Thaw the vial in 37°C water bath for approximately 1-2 minutes. 2. Transfer the cell suspension (0.8 mL) to a 15 mL/50 mL conical sterile polypropylene centrifuge tube containing 8.4 mL pre-warmed culture medium, wash vial with an additional 0.8 mL culture medium (total volume 10 mL) to collect remaining cells, and centrifuge at 201 x g (rcf) for 5 minutes at room temperature. 10 mL represents minimum recommended dilution. 20 mL represents maximum recommended dilution. 3. Resuspend the cell pellet in 5 mL pre-warmed culture medium and count using a haemocytometer or alternative cell counting method. Based on cell count, seed cells in an appropriate cell culture flask at a density of 2×10^4 cells/cm². Seeding density is given as a guide only and should be scaled to align with individual lab schedules. 4. Incubate the culture at 37°C incubator with 5% CO₂. Cultures should be monitored daily. <p>Subculture guidelines:</p> <p>All seeding densities should be based on cell counts gained by established methods. A guide seeding density of 2×10^4 cells/cm² is recommended.</p> <p>A partial media change 24 hours prior to subculture may be helpful to encourage growth, if required.</p> <p>Cells should be passaged when they have achieved 80-90% confluence.</p>

This product is subject to limited use licenses from The Broad Institute and ERS Genomics Limited, and is developed with patented technology. For full details of the limited use licenses and relevant patents please refer to our [limited use license](#) and [patent pages](#).

We will provide viable cells that proliferate on revival.

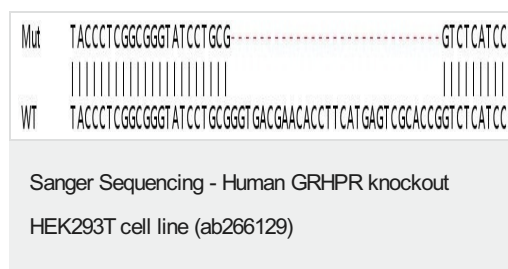
性能

Number of cells	1 x 10 ⁶ cells/vial, 1 mL
Adherent /Suspension	Adherent
Tissue	Kidney
Cell type	epithelial
STR Analysis	Amelogenin X D5S818: 8, 9 D13S317: 12, 14 D7S820: 11 D16S539: 9, 13 vWA: 16, 19 TH01: 7, 9.3 TPOX: 11 CSF1PO: 11, 12
Mycoplasma free	Yes
存放说明	Shipped on Dry Ice. Store in liquid nitrogen.
存储溶液	Constituents: 8.7% Dimethylsulfoxide, 2% Cellulose, methyl ether

靶标

功能	Enzyme with hydroxy-pyruvate reductase, glyoxylate reductase and D-glycerate dehydrogenase enzymatic activities. Reduces hydroxypyruvate to D-glycerate, glyoxylate to glycolate oxidizes D-glycerate to hydroxypyruvate.
组织特异性	Ubiquitous. Most abundantly expressed in the liver.
疾病相关	Defects in GRHPR are the cause of hyperoxaluria primary type 2 (HP2) [MIM:260000]; also known as primary hyperoxaluria type II (PH2). HP2 is a disorder where the main clinical manifestation is calcium oxalate nephrolithiasis though chronic as well as terminal renal insufficiency has been described. It is characterized by an elevated urinary excretion of oxalate and L-glycerate.
序列相似性	Belongs to the D-isomer specific 2-hydroxyacid dehydrogenase family.

图片



Homozygous: 29 bp deletion in exon1

Please note: All products are "FOR RESEARCH USE ONLY. NOT FOR USE IN DIAGNOSTIC PROCEDURES"

Our Abpromise to you: Quality guaranteed and expert technical support

- Replacement or refund for products not performing as stated on the datasheet
- Valid for 12 months from date of delivery
- Response to your inquiry within 24 hours

- We provide support in Chinese, English, French, German, Japanese and Spanish
- Extensive multi-media technical resources to help you
- We investigate all quality concerns to ensure our products perform to the highest standards

If the product does not perform as described on this datasheet, we will offer a refund or replacement. For full details of the Abpromise, please visit <https://www.abcam.cn/abpromise> or contact our technical team.

Terms and conditions

- Guarantee only valid for products bought direct from Abcam or one of our authorized distributors