

Human ABHD6 knockout HeLa cell line ab264730

3 图像

概述

产品名称	人ABHD6 knockout HeLa cell line
Parental Cell Line	HeLa
Organism	Human
Mutation description	Knockout achieved by using CRISPR/Cas9, 1 bp deletion in exon 5 and 2 bp deletion in exon 5 and 5 bp deletion in exon 5
Passage number	<20
Knockout validation	Sanger Sequencing
Biosafety level	2
常规说明	<p>Recommended control: Human wild-type HeLa cell line (ab255928). Please note a wild-type cell line is not automatically included with a knockout cell line order, if required please add recommended wild-type cell line at no additional cost using the code WILDTYPE-TMTK1.</p> <p>Cryopreservation cell medium: Cell Freezing Medium-DMSO Serum free media, contains 8.7% DMSO in MEM supplemented with methyl cellulose.</p> <p>Culture medium: DMEM (High Glucose) + 10% FBS</p> <p>Initial handling guidelines: Upon arrival, the vial should be stored in liquid nitrogen vapor phase and not at -80°C. Storage at -80°C may result in loss of viability.</p> <ol style="list-style-type: none"> 1. Thaw the vial in 37°C water bath for approximately 1-2 minutes. 2. Transfer the cell suspension (0.8 mL) to a 15 mL/50 mL conical sterile polypropylene centrifuge tube containing 8.4 mL pre-warmed culture medium, wash vial with an additional 0.8 mL culture medium (total volume 10 mL) to collect remaining cells, and centrifuge at 201 x g (rcf) for 5 minutes at room temperature. 10 mL represents minimum recommended dilution. 20 mL represents maximum recommended dilution. 3. Resuspend the cell pellet in 5 mL pre-warmed culture medium and count using a haemocytometer or alternative cell counting method. Based on cell count, seed cells in an appropriate cell culture flask at a density of 2×10^4 cells/cm². Seeding density is given as a guide only and should be scaled to align with individual lab schedules. 4. Incubate the culture at 37°C incubator with 5% CO₂. Cultures should be monitored daily. <p>Subculture guidelines:</p> <p>All seeding densities should be based on cell counts gained by established methods. A guide seeding density of 2×10^4 cells/cm² is recommended.</p> <p>A partial media change 24 hours prior to subculture may be helpful to encourage growth, if required.</p>

Cells should be passaged when they have achieved 80-90% confluence.

This product is subject to limited use licenses from The Broad Institute and ERS Genomics Limited, and is developed with patented technology. For full details of the limited use licenses and relevant patents please refer to our [limited use license](#) and [patent pages](#).

We will provide viable cells that proliferate on revival.

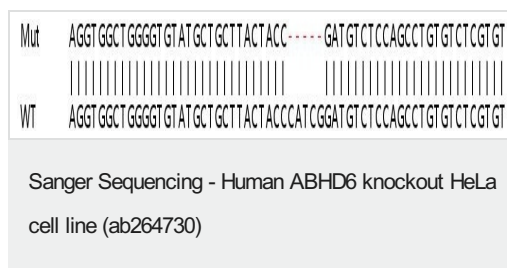
性能

Number of cells	1 x 10 ⁶ cells/vial, 1 mL
Adherent /Suspension	Adherent
Tissue	Cervix
Cell type	epithelial
Disease	Adenocarcinoma
Gender	Female
STR Analysis	Amelogenin X D5S818: 11, 12 D13S317: 12, 13.3 D7S820: 8, 12 D16S539: 9, 10 vWA: 16, 18 TH01: 7 TPOX: 8,12 CSF1PO: 9, 10
Mycoplasma free	Yes
存放说明	Shipped on Dry Ice. Store in liquid nitrogen.
存储溶液	Constituents: 8.7% Dimethylsulfoxide, 2% Cellulose, methyl ether

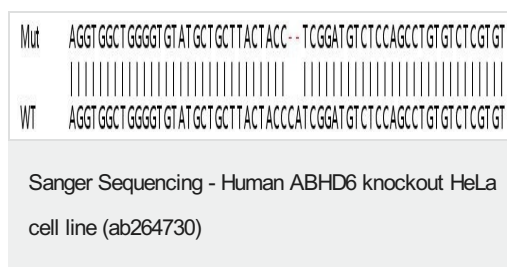
靶标

相关性	ABHD6 belongs to the alpha/beta hydrolase superfamily. It is highly expressed in mammalian brain and catalyzes the hydrolysis of the endocannabinoid 2-arachidonoyl glycerol (2-AG).
细胞定位	Membrane; Single-pass type II membrane protein

图片



Allele-1: 5 bp deletion in exon 5.



Allele-2: 2 bp deletion in exon 5.

```
Mut  AGGTGGCTGGGGTGTATGCTGCTTACTACC-ATCGGATGTCCTCAGCCTGTGTCTCGTGT
      |||
WT   AGGTGGCTGGGGTGTATGCTGCTTACTACCCATCGGATGTCCTCAGCCTGTGTCTCGTGT
```

Allele-3: 1 bp deletion in exon 5.

Sanger Sequencing - Human ABHD6 knockout HeLa cell line (ab264730)

Please note: All products are "FOR RESEARCH USE ONLY. NOT FOR USE IN DIAGNOSTIC PROCEDURES"

Our Abpromise to you: Quality guaranteed and expert technical support

- Replacement or refund for products not performing as stated on the datasheet
- Valid for 12 months from date of delivery
- Response to your inquiry within 24 hours
- We provide support in Chinese, English, French, German, Japanese and Spanish
- Extensive multi-media technical resources to help you
- We investigate all quality concerns to ensure our products perform to the highest standards

If the product does not perform as described on this datasheet, we will offer a refund or replacement. For full details of the Abpromise, please visit <https://www.abcam.cn/abpromise> or contact our technical team.

Terms and conditions

- Guarantee only valid for products bought direct from Abcam or one of our authorized distributors