

### (S)-3,5-DHPG, group I mGlu agonist ab120007

**29 References**   **2 图像**

#### 概述

**产品名称** (S)-3,5-DHPG, group I mGlu激动剂

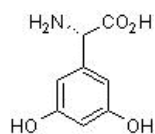
**描述** Selective group I mGlu激动剂

**生物学描述** Selective group I mGlu agonist.

Also available in simple stock solutions ([ab144484](#)) - add 1 ml of water to get an exact, ready-to-use concentration.

**CAS编号** 162870-29-3

#### 化学结构



#### 性能

**化学名称** (S)-3,5-Dihydroxyphenylglycine

**分子量** 183.16

**分子式** C<sub>8</sub>H<sub>9</sub>NO<sub>4</sub>

**PubChem识别号** 443586

**存放说明** Store at -20°C. Store In the Dark. Store under desiccating conditions. This product is air and light sensitive and impurities can occur as a result of air oxidation or due to metabolism by microbes.

**溶解度概述** Soluble in water to 50 mM

**处理** This compound is also unstable in alkaline solution when it rapidly forms a brown colouration it is therefore recommended that alkaline is not used to dissolve this compound.

We recommend stock solutions are made up in water, aliquoted immediately and stored at -20°C. They should be used within one week.

Refer to SDS for further information.

Need more advice on solubility, usage and handling? Please visit our [frequently asked questions \(FAQ\) page](#) for more details.

**SMILES** Oc1cc(cc(O)c1)[C@H](N)C(=O)O

来源

Synthetic

应用

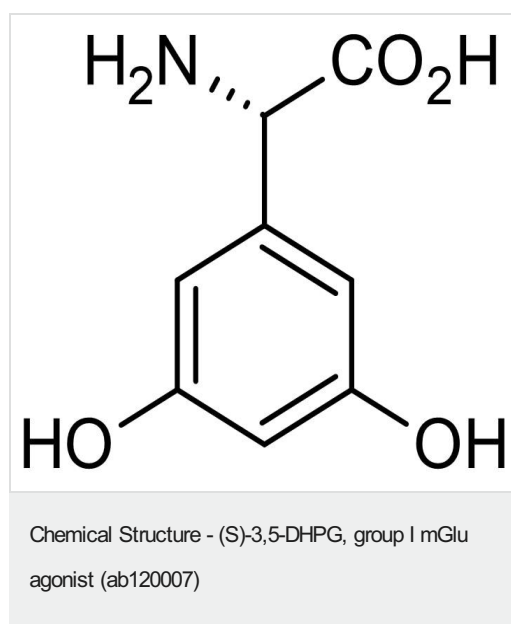
The Abpromise guarantee

**Abpromise™**承诺保证使用ab120007于以下的经测试应用

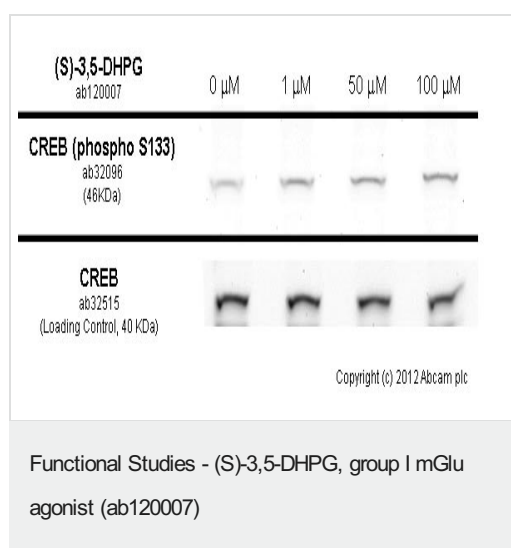
“应用说明”部分 下显示的仅为推荐的起始稀释度;实际最佳的稀释度/浓度应由使用者检定。

应用	Ab评论	说明
Functional Studies		Use at an assay dependent concentration.

图片



2D chemical structure image of ab120007, (S)-3,5-DHPG, group I mGlu agonist



SK-N-SH cells were incubated at 37°C for 30 minutes with vehicle control (0 μM) and different concentrations of (S)-3,5-DHPG (ab120007). Increased expression of CREB (phospho S133) in SK-N-SH cells correlates with an increase (S)-3,5-DHPG concentration, as described in literature.

Whole cell lysates were prepared with RIPA buffer (containing protease inhibitors and sodium orthovanadate), 20 μg of each were loaded on the gel and the WB was run under reducing conditions. After transfer the membrane was blocked for an hour using 3% milk before being incubated with **ab32096** at 1/500 dilution and **ab32515** at 1 μg/ml overnight at 4°C. Antibody binding was detected using an anti-rabbit antibody conjugated to HRP (**ab97051**) at 1/10000 dilution and visualised using ECL development solution.

**Please note:** All products are "FOR RESEARCH USE ONLY. NOT FOR USE IN DIAGNOSTIC PROCEDURES, NOT FOR USE IN HUMANS"

### **Our Abpromise to you: Quality guaranteed and expert technical support**

---

- Replacement or refund for products not performing as stated on the datasheet
- Valid for 12 months from date of delivery
- Response to your inquiry within 24 hours
- We provide support in Chinese, English, French, German, Japanese and Spanish
- Extensive multi-media technical resources to help you
- We investigate all quality concerns to ensure our products perform to the highest standards

If the product does not perform as described on this datasheet, we will offer a refund or replacement. For full details of the Abpromise, please visit <https://www.abcam.cn/abpromise> or contact our technical team.

### **Terms and conditions**

---

- Guarantee only valid for products bought direct from Abcam or one of our authorized distributors
- Abcam biochemicals are novel compounds and we have not tested their biological activity in house. Please use the literature to identify how to use these products effectively. If you require further assistance please contact the scientific support team