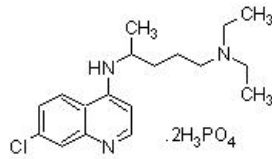


Chloroquine diphosphate, apoptosis and autophagy inhibitor ab142116

[13 References](#) [2 图像](#)

概述

产品名称	Chloroquine diphosphate, apoptosis and autophagy抑制剂
描述	Antimalarial; apoptosis and autophagy抑制剂
生物学描述	Antimalarial agent. Inhibits tumor cell growth and metastasis and induces apoptosis <i>in vitro</i> . Binds to Fe(II)-protoporphyrin IX (FP) to form FP-chloroquine complex resulting in cell lysis and parasite cell autodigestion.
纯度	> 98%
CAS编号	50-63-5
化学结构	



性能

化学名称	<i>N</i> ⁴ -(7-Chloroquinolin-4-yl)- <i>N</i> ¹ , <i>N</i> ¹ -diethylpentane-1,4-diamine diphosphate
分子量	515.87
分子式	C ₁₈ H ₂₆ ClN ₃ ·2H ₃ PO ₄
PubChem识别号	64927
存放说明	Store at -20°C. Store under desiccating conditions. The product can be stored for up to 12 months.
溶解度概述	Soluble in water to 100 mM
处理	Wherever possible, you should prepare and use solutions on the same day. However, if you need to make up stock solutions in advance, we recommend that you store the solution as aliquots in tightly sealed vials at -20°C. Generally, these will be useable for up to one month. Before use, and prior to opening the vial we recommend that you allow your product to equilibrate to room temperature for at least 1 hour. Refer to SDS for further information. Need more advice on solubility, usage and handling? Please visit our frequently asked

[questions \(FAQ\) page](#) for more details.

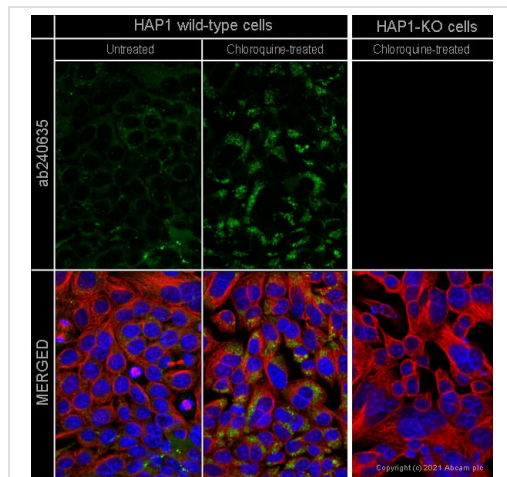
SMILES

CCN(CC)CCCC(C)NC1=C2C=CC(=CC2=NC=C1)Cl.OP(=O)(O)O.OP(=O)(O)O

来源

Synthetic

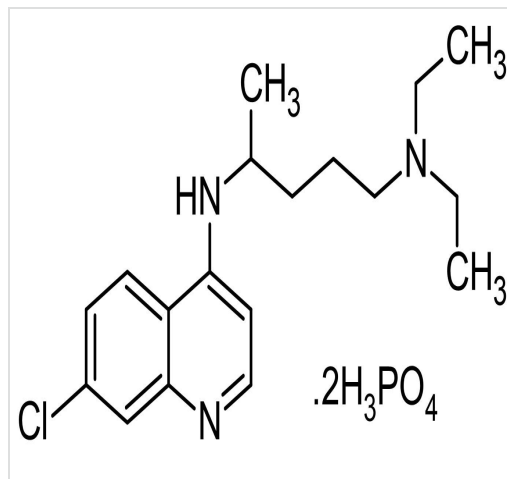
图片



Immunocytochemistry - Chloroquine diphosphate, apoptosis and autophagy inhibitor (ab142116)

ab240635 staining SQSTM1 in wild-type Hap1 cells and SQSTM1 knockout Hap1 cells treated with chloroquine (ab142116, 50 μ M for 24 hrs). The cells were fixed with 100% methanol (5 min) then permeabilized with 0.1% Triton X-100 for 5 minutes and then blocked with 1% BSA/10% normal goat serum/0.3M glycine in 0.1% PBS-Tween for 1h. The cells were then incubated with **ab240635** at 1 μ g/ml concentration and **ab7291** (Mouse monoclonal to alpha Tubulin) at 1/1000 dilution overnight at 4 $^{\circ}$ C followed by a further incubation at room temperature for 1h with a goat secondary antibody to rabbit IgG (Alexa Fluor[®] 488) (**ab150081**) at 2 μ g/ml (shown in green) and a goat secondary antibody to mouse IgG (Alexa Fluor[®] 594) (**ab150120**) at 2 μ g/ml (shown in red). Nuclear DNA was labelled in blue with DAPI.

Image was taken with a confocal microscope (Leica-Microsystems TCS SP8).



Chemical Structure - Chloroquine diphosphate, apoptosis and autophagy inhibitor (ab142116)

2D chemical structure image of ab142116, Chloroquine diphosphate, apoptosis and autophagy inhibitor

Please note: All products are "FOR RESEARCH USE ONLY. NOT FOR USE IN DIAGNOSTIC PROCEDURES, NOT FOR USE IN HUMANS"

Our Abpromise to you: Quality guaranteed and expert technical support

- Replacement or refund for products not performing as stated on the datasheet

- Valid for 12 months from date of delivery
- Response to your inquiry within 24 hours

- We provide support in Chinese, English, French, German, Japanese and Spanish
- Extensive multi-media technical resources to help you
- We investigate all quality concerns to ensure our products perform to the highest standards

If the product does not perform as described on this datasheet, we will offer a refund or replacement. For full details of the Abpromise, please visit <https://www.abcam.cn/abpromise> or contact our technical team.

Terms and conditions

- Guarantee only valid for products bought direct from Abcam or one of our authorized distributors
- Abcam biochemicals are novel compounds and we have not tested their biological activity in house. Please use the literature to identify how to use these products effectively. If you require further assistance please contact the scientific support team