

(+)-MK 801 maleate (Dizocilpine), Non-competitive NMDA antagonist ab120027

[42 References](#) [2 图像](#)

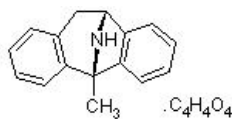
概述

产品名称	(+)-MK 801 maleate (Dizocilpine), Non-competitive NMDA拮抗剂
描述	Non-competitive NMDA拮抗剂
生物学描述	Potent, selective non-competitive NMDA receptor antagonist. Open channel blocker of the NMDA receptor operated ion channel.

Also available in simple stock solutions ([ab144485](#)) - add 1 ml of water to get an exact, ready-to-use concentration.

CAS编号 77086-22-7

化学结构



性能

化学名称	(5S,10R)-(+)-5-Methyl-10,11-dihydro-5H-dibenzo[a,d]cyclohepten-5,10-imine maleate
分子量	337.37
分子式	C ₁₆ H ₁₅ N.C ₄ H ₄ O ₄
PubChem识别号	6420042
存放说明	Store at +4°C. Store under desiccating conditions. The product can be stored for up to 12 months.
溶解度概述	Soluble in water to 25 mM
处理	<p>Wherever possible, you should prepare and use solutions on the same day. However, if you need to make up stock solutions in advance, we recommend that you store the solution as aliquots in tightly sealed vials at -20°C. Generally, these will be useable for up to one month. Before use, and prior to opening the vial we recommend that you allow your product to equilibrate to room temperature for at least 1 hour.</p> <p>Toxic, refer to SDS for further information.</p> <p>Need more advice on solubility, usage and handling? Please visit our frequently asked</p>

[questions \(FAQ\) page](#) for more details.

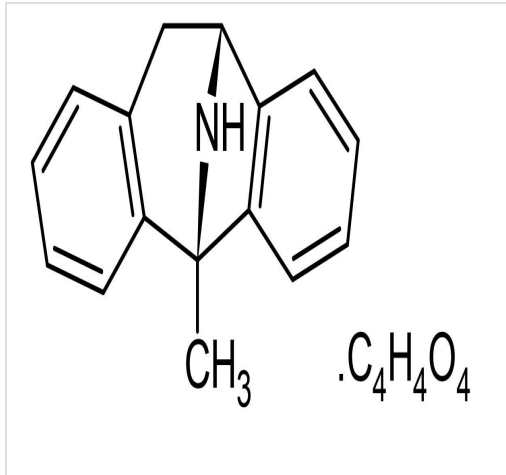
SMILES

O=C(O)/C=CC(=O)O.C[C@@]42N[C@H](Cc1ccccc12)c3ccccc34

来源

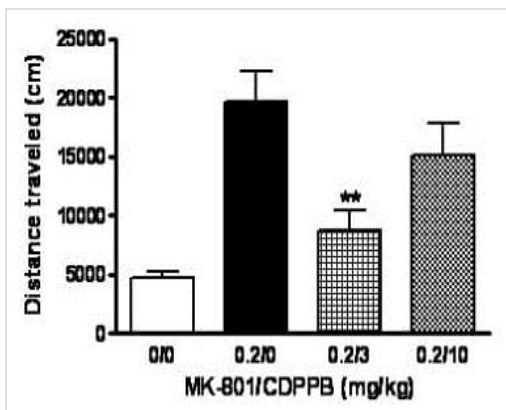
Synthetic

图片



Chemical Structure - (+)-MK 801 maleate
(Dizocilpine), Non-competitive NMDA antagonist
(ab120027)

2D chemical structure image of ab120027, (+)-MK 801 maleate
(Dizocilpine), Non-competitive NMDA antagonist



Functional Studies - (+)-MK 801 maleate
(Dizocilpine), Non-competitive NMDA antagonist
(ab120027)

Image from Fowler SW et al., Neurobiol Learn Mem.
2010;95(1):73-9. Fig 2(B).; doi:
10.1016/j.nlm.2010.11.009 with permission from
Elsevier.

CDPPB does not influence spontaneous locomotor activity but attenuates MK-801-induced hyperlocomotion. Animals were injected (s.c./i.p.) with PBS/Vehicle (0/0), 0.2 mg/kg MK-801/Vehicle (0.2/0), 0.2 mg/kg MK-801/3 mg/kg CDPPB (0.2/3) or 0.2 mg/kg MK-801/10 mg/kg CDPPB (0.2/10) 20 minutes before being placed in the activity chamber. Activity was recorded for 30 minutes. Data are expressed as mean \pm SEM of distance traveled (n=6-7). **p<0.01 vs. 0.2 mg/kg MK-801/Vehicle group (One-way ANOVA, Bonferroni's posttest).

Please note: All products are "FOR RESEARCH USE ONLY. NOT FOR USE IN DIAGNOSTIC PROCEDURES, NOT FOR USE IN HUMANS"

Our Abpromise to you: Quality guaranteed and expert technical support

- Replacement or refund for products not performing as stated on the datasheet
- Valid for 12 months from date of delivery
- Response to your inquiry within 24 hours
- We provide support in Chinese, English, French, German, Japanese and Spanish
- Extensive multi-media technical resources to help you
- We investigate all quality concerns to ensure our products perform to the highest standards

If the product does not perform as described on this datasheet, we will offer a refund or replacement. For full details of the Abpromise, please visit <https://www.abcam.cn/abpromise> or contact our technical team.

Terms and conditions

- Guarantee only valid for products bought direct from Abcam or one of our authorized distributors
- Abcam biochemicals are novel compounds and we have not tested their biological activity in house. Please use the literature to identify how to use these products effectively. If you require further assistance please contact the scientific support team