

ENO1 Assay Kit (alpha Enolase, Human) ab117994

6 References 4 图像

概述

产品名称 ENO1 Assay试剂盒(alpha Enolase,人)

检测方法 Colorimetric

批次内				
样品	n	Mean	SD	CV%
Cell extract	9			9%

批次间				
样品	n	Mean	SD	CV%
Cell extract	4			11%

样品类型 Cell culture extracts, Tissue Extracts

检测类型 Enzyme activity

灵敏度 125 ng/ml

范围 125 ng/ml - 2000 ng/ml

回收率 90 %

特定样本回收率		
样品类型	平均%	范围
Cell culture supernatant	63	% - %
Serum	140	% - %

种属反应性 与反应: Human

不与反应: Mouse, Rat

产品概述 ENO1 Assay Kit (alpha Enolase, Human) ab117994 is used to determine enolase 1 (ENO1) activity in a sample. The native enzyme is immunocaptured within the wells of the microplate; this removes all other enzymes. The enolase activity is determined via a coupled reaction to the consumption of NADH in an assay buffer.

平台 Microplate reader

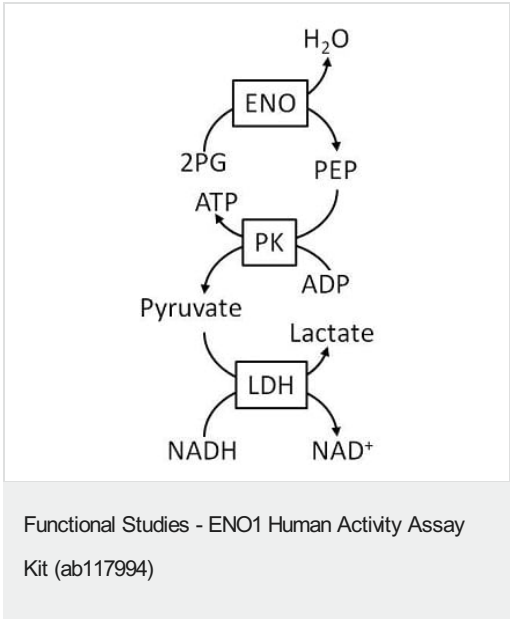
性能

存放说明

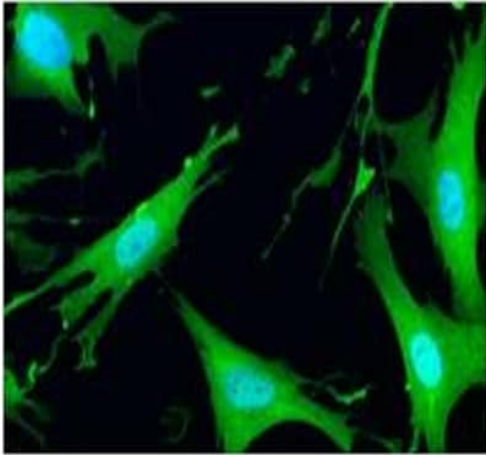
Store at +4°C. Please refer to protocols.

组件	1 x 96 tests
10X Blocking Buffer	1 x 6ml
20X Buffer	1 x 20ml
Base Buffer	1 x 24ml
Extraction Buffer (ab260490)	1 x 15ml
LDH (Lactate Dehydrogenase)	1 x 187.5 units
Microplate 96 antibody coated wells in 12 strips	1 unit
PK (Pyruvate Kinase)	1 x 187.5 units
Reagent Mix	1 x 1ml

图片

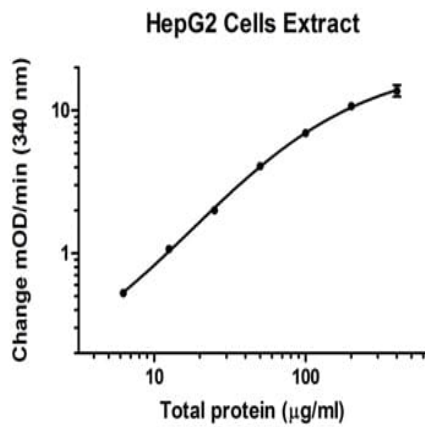


Scheme of reactions used in this kit. Abbreviations are as follows: enolase (ENO), 2-phospho-D-glycerate (2PG), phosphoenolpyruvate (PEP), pyruvate kinase (PK), lactate dehydrogenase (LDH).



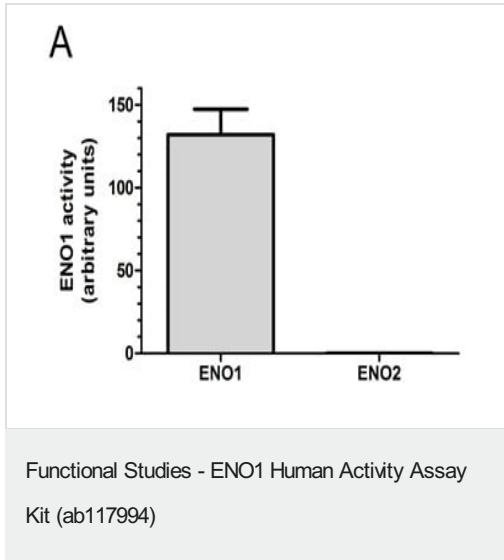
Immunofluorescent detection of ENO1 in cytosol in HeLa cells using [ab112994](#).

Immunocytochemistry/ Immunofluorescence - ENO1  
Human Activity Assay Kit (ab117994)



Example of dilution series prepared from HepG2 cells extract.

Functional Studies - ENO1 Human Activity Assay  
Kit (ab117994)



Analysis of recombinant ENO1 (**ab89248**) and the neuron-specific recombinant ENO2 (**ab78797**), each at 2000 ng/mL. The relative ENO activity was determined from HepG2 standard curve as described in the protocol. The data show that the activity of the neuron-specific ENO2 can't be detected.

**Please note:** All products are "FOR RESEARCH USE ONLY. NOT FOR USE IN DIAGNOSTIC PROCEDURES"

### Our Abpromise to you: Quality guaranteed and expert technical support

- Replacement or refund for products not performing as stated on the datasheet
- Valid for 12 months from date of delivery
- Response to your inquiry within 24 hours
- We provide support in Chinese, English, French, German, Japanese and Spanish
- Extensive multi-media technical resources to help you
- We investigate all quality concerns to ensure our products perform to the highest standards

If the product does not perform as described on this datasheet, we will offer a refund or replacement. For full details of the Abpromise, please visit <https://www.abcam.cn/abpromise> or contact our technical team.

### Terms and conditions

- Guarantee only valid for products bought direct from Abcam or one of our authorized distributors