

Calcein AM Assay Kit (Fluorometric) ab228556

1 References [1 图像](#)

概述

产品名称	Calcein AM Assay试剂盒(Fluorometric)
检测方法	Fluorescent
样品类型	Adherent cells, Suspension cells
检测类型	Cell-based (quantitative)
产品概述	Calcein AM Assay Kit ab228556 is a simple, extremely sensitive quantitative assay to measure the cell viability of adherent and suspension cells. It can detect as low as 50 viable cells in less than 30 minutes.

Calcein AM is a non-fluorescent, hydrophobic compound that easily penetrates intact and live cells.

During the Calcein AM assay, hydrolysis of Calcein AM by intracellular esterases produces a hydrophilic, strongly fluorescent compound that is retained in the cell cytoplasm and can be measured at Ex/Em = 485/530 nm. The measured fluorescence intensity is proportional to the number of viable cells.

The Calcein AM assay can be used for cell proliferation, cell viability, and cytotoxicity studies.

Review our [cell health assays guide](#) to learn more about our other [cell viability](#), [cytotoxicity](#) and [cell proliferation](#) assay kits.

说明	This product is manufactured by BioVision, an Abcam company and was previously called K305 EZViable™ Calcein AM Cell Viability Assay Kit (Fluorometric). K305-1000 is the same size as the 1000 test size of ab228556.
----	--

Review the [cell health assay guide](#) to learn about more kits to perform a [cell viability assay](#), [cytotoxicity assay](#) and [cell proliferation assay](#).

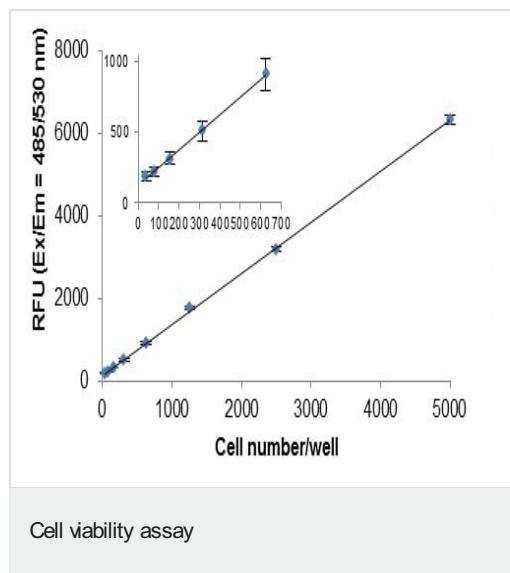
平台	Microplate reader
----	-------------------

性能

存放说明	Store at -20°C. Please refer to protocols.
------	--

组件	1000 tests
Assay Buffer XXVII	1 x 100ml
Cell Dye II	2 vials

图片



Cell Viability Assay: Fibroblast cells were grown in DMEM supplemented with 10% FBS, harvested using trypsin and counted using Trypan blue and a hemocytometer. Cells were serially diluted in a clear cell culture plate and incubated for 30 minutes with Calcein AM at 37°C. After incubation, cells were lysed using Cell Lysis Buffer for 10 minutes at room temperature. Cell lysates were transferred into a 96-well white plate and fluorescence was measured. Inset graph is an expanded segment of the assay data at lower cell number per well.

Please note: All products are "FOR RESEARCH USE ONLY. NOT FOR USE IN DIAGNOSTIC PROCEDURES"

Our Abpromise to you: Quality guaranteed and expert technical support

- Replacement or refund for products not performing as stated on the datasheet
- Valid for 12 months from date of delivery
- Response to your inquiry within 24 hours
- We provide support in Chinese, English, French, German, Japanese and Spanish
- Extensive multi-media technical resources to help you
- We investigate all quality concerns to ensure our products perform to the highest standards

If the product does not perform as described on this datasheet, we will offer a refund or replacement. For full details of the Abpromise, please visit <https://www.abcam.cn/abpromise> or contact our technical team.

Terms and conditions

- Guarantee only valid for products bought direct from Abcam or one of our authorized distributors