

Beta Secretase Activity Assay Kit (Fluorometric) ab65357

★★★★★ 1 Abreviews 33 References 4 图像

概述	
产品名称	Beta Secretase Activity Assay试剂盒(Fluorometric)
检测方法	Fluorescent
样品类型	Urine, Serum, Plasma, Other biological fluids, Cell Lysate, Cell culture media, Tissue Lysate
检测类型	Enzyme activity
检测时间	1h 00m
种属反应性	与反应: Mammals, Other species
产品概述	<p>Beta Secretase Activity Assay Kit (ab65357) uses a convenient fluorescence method for detecting beta secretase activity in biological and purified samples.</p> <p>The beta secretase assay protocol uses a secretase-specific peptide conjugated to two reporter molecules, EDANS and DABCYL. In the uncleaved form, the fluorescent signal from EDANS is quenched by the physical proximity of the DABCYL moiety. Cleavage of the peptide by beta secretase physically separates EDANS and DABCYL allowing for the release of a fluorescent signal. The level of secretase enzymatic activity in samples is proportional to the level of fluorescence intensity.</p>
说明	<p>This product is manufactured by BioVision, an Abcam company and was previously called K360 Beta-Secretase Activity Fluorometric Assay Kit. K360-100 is the same size as the 100 test size of ab65357.</p> <p>β-Secretase (Beta secretase) is responsible for the proteolytic process of the amyloid precursor protein (APP). It cleaves APP at the N-terminus of the A-beta peptide sequence, between residues 671 – 672, leading to the generation and extracellular release of beta-cleaved soluble APP, and a corresponding cell-associated C-terminal fragment which is later released by gamma-secretase. It has been implicated to be an excellent target for anti-amyloid therapy for the treatment of Alzheimer’s disease.</p> <p>The standard is affinity purified.</p>
平台	Microplate reader
性能	
存放说明	Store at -80°C. Please refer to protocols.

组 件	100 tests
β-Secretase Substrate	1 x 200μl
β-Secretase Extraction Buffer	1 x 25ml
β-Secretase Inhibitor Control	1 x 100μl
β-Secretase Reaction Buffer	1 x 10ml
Active β-Secretase	1 x 20μl

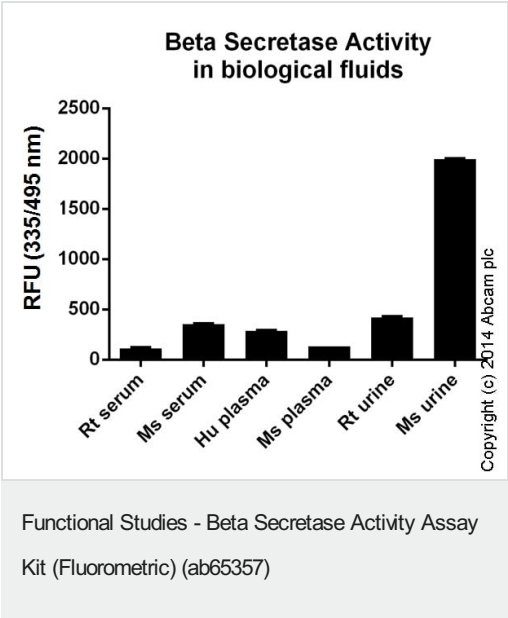
相关性

Beta secretase is a protease responsible for the proteolytic processing of the amyloid precursor protein (APP). Amyloid beta peptide is the major constituent of amyloid plaques in the brains of individuals afflicted with Alzheimers disease. This peptide is generated from the beta-amyloid precursor protein (beta APP) in a two-step process. The first step involves cleavage of the extracellular, amino-terminal domain of beta APP. Protein cleavage is performed by an aspartyl protease termed beta-secretase (BACE), of which there are two isoforms, BACE1 and 2. Beta APP cleavage by beta-secretase results in the cellular secretion of a segment of beta APP and a membrane-bound remnant. This remnant is then processed by another protease termed gamma-secretase. Gamma-secretase cleaves an intra-membrane site in the carboxyl-terminal domain of beta APP, thus generating the amyloid beta peptide.

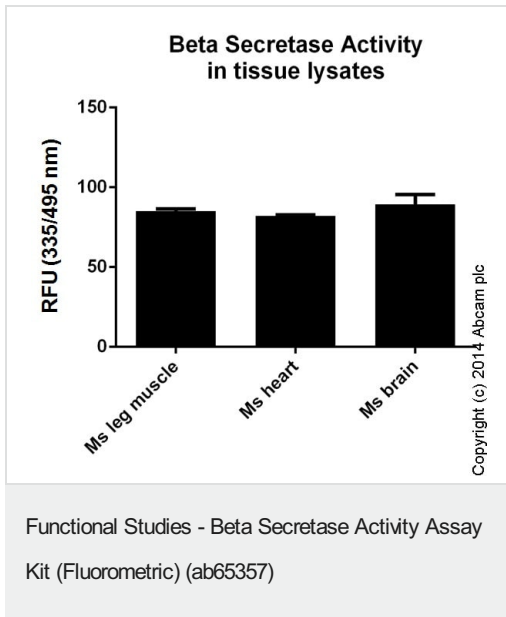
细胞定位

Membrane; Single-pass type I membrane protein.

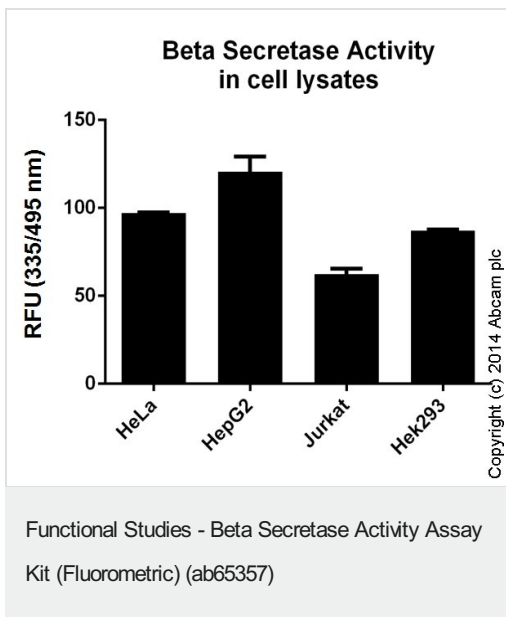
图 片



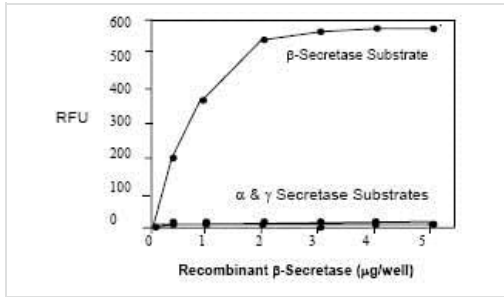
Beta Secretase Activity measured in biological fluids. Tested neat.



Beta Secretase Activity measured in tissue lysates (each with protein concentration of 4 mg/mL)



Beta Secretase Activity measured in cell lysates (each with concentration of 2e7 cells/mL).



Beta-Secretase Cleavage Activity assayed using ab65357.

Functional Studies - Beta Secretase Activity Assay
Kit (Fluorometric) (ab65357)

Please note: All products are "FOR RESEARCH USE ONLY. NOT FOR USE IN DIAGNOSTIC PROCEDURES"

Our Abpromise to you: Quality guaranteed and expert technical support

- Replacement or refund for products not performing as stated on the datasheet
- Valid for 12 months from date of delivery
- Response to your inquiry within 24 hours
- We provide support in Chinese, English, French, German, Japanese and Spanish
- Extensive multi-media technical resources to help you
- We investigate all quality concerns to ensure our products perform to the highest standards

If the product does not perform as described on this datasheet, we will offer a refund or replacement. For full details of the Abpromise, please visit <https://www.abcam.cn/abpromise> or contact our technical team.

Terms and conditions

- Guarantee only valid for products bought direct from Abcam or one of our authorized distributors