

BCA protein assay kit reducing agent compatible (microplate)

ab207003

5 References 3 图像

概述

产品名称	BCA蛋白assay试剂盒reducing agent compatible (microplate)
检测方法	Colorimetric
样品类型	Cell Lysate, Purified protein, Tissue Lysate
产品概述	<p>Abcam's BCA protein assay kit reducing agent compatible (microplate) (ab207003) measures total protein concentration of pure proteins, extracts or lysates in the presence of reducing agents.</p> <p>Unlike the majority of protein assay kits, ab207003 is compatible with strong reducing agents such as TCEP up to 20 mM, DTT up to 10 mM and β-mercaptoethanol up to 35 mM. This kit is based on the chelation of bicinchoninic acid (BCA) with the cuprous cation (Cu¹⁺), which is generated by reduction of cupric cation (Cu²⁺) by the protein in alkaline conditions. The assay is linear over a wide range of protein concentrations (25-2000 µg/mL). The kit also includes Bovine Serum Albumin (BSA) as a reference protein standard. The kit has been formatted for microplate-based protein assays.</p> <p>Support on how to determine protein concentration can be found here.</p>
说明	<p>This product is manufactured by BioVision, an Abcam company and was previously called K818 BCA Protein Assay Kit - Reducing Agent Compatible. K818-1000 is the same size as the 1000 test size of ab207003.</p>
平台	Microplate reader

性能

存放说明 Store at room temperature. Please refer to protocols.

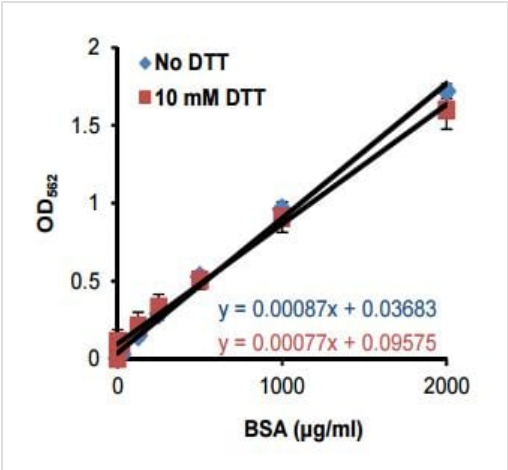
组件	1000 tests
BCA Reagent A	1 x 200ml
BCA Reagent B	1 x 20ml
Blocking Reagent	1 vial

组件	1000 tests
Blocking Reagent Buffer	1 x 20ml
BSA Standard II	10 x 1ml

相关性

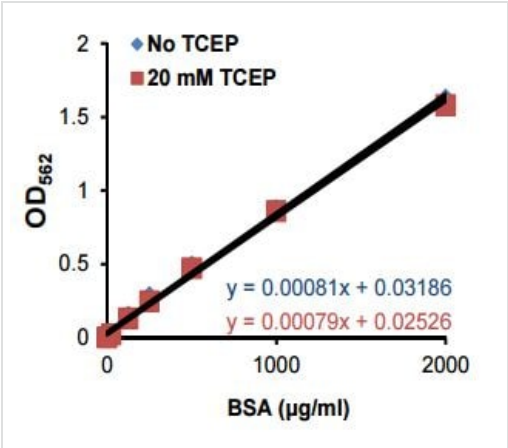
The BCA Protein assay (or Smith assay) is a biochemical assay for determining the total level of protein in a solution. The total protein concentration is determined by measuring the color change of the sample solution from green to purple which is proportional to the protein concentration.

图片



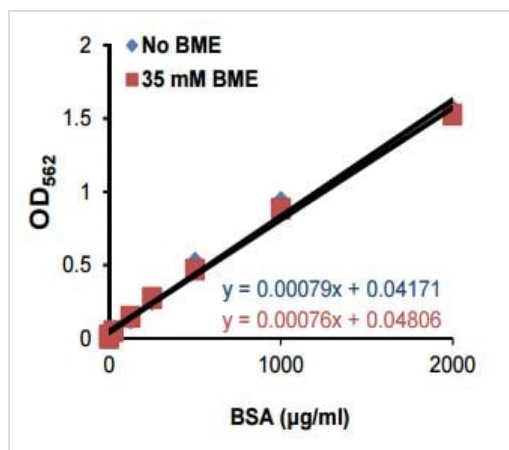
Standard Curve for BSA containing blocking reagent in the presence and absence of 10 mM DTT.

Standard curves for BSA containing blocking reagent in the presence and absence of 10 mM DTT obtained using ab207003.



Standard Curve for BSA containing blocking reagent in the presence and absence of 20 mM TCEP.

Standard curves for BSA containing blocking reagent in the presence and absence of 20 mM TCEP. Generated using ab207003.



Standard curves for BSA containing blocking reagent in the presence and absence of 35 mM β-mercaptoethanol (BME).
Generated using ab207003.

Standard Curve for BSA containing blocking reagent in the presence and absence of 35 mM β-mercaptoethanol (BME).

Please note: All products are "FOR RESEARCH USE ONLY. NOT FOR USE IN DIAGNOSTIC PROCEDURES"

Our Abpromise to you: Quality guaranteed and expert technical support

- Replacement or refund for products not performing as stated on the datasheet
- Valid for 12 months from date of delivery
- Response to your inquiry within 24 hours
- We provide support in Chinese, English, French, German, Japanese and Spanish
- Extensive multi-media technical resources to help you
- We investigate all quality concerns to ensure our products perform to the highest standards

If the product does not perform as described on this datasheet, we will offer a refund or replacement. For full details of the Abpromise, please visit <https://www.abcam.cn/abpromise> or contact our technical team.

Terms and conditions

- Guarantee only valid for products bought direct from Abcam or one of our authorized distributors