

Pro-Apoptosis Bcl Family Antibody Sampler Panel ab228527

重组

6 图像

概述

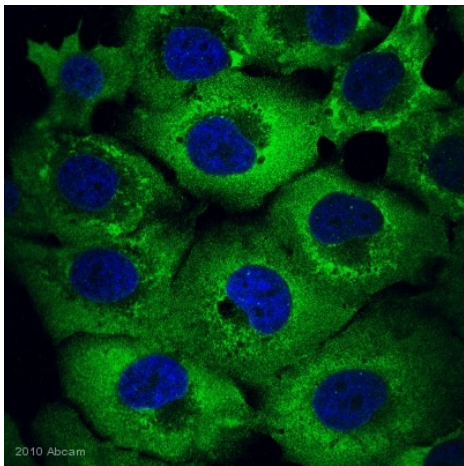
产品名称	Pro-Apoptosis Bcl Family抗体Sampler组合
产品概述	ab228527, Apoptosis Antibody Sampler Panel, is a collection of 1 anti-rabbit (HRP) secondary antibody and 5 recombinant rabbit monoclonal antibodies against Bad, Bax, Bcl-2, Bcl-XL, and MCL1 provided in 10 µl trial sizes.
说明	<p><u>Explore our range of antibody sample panels</u> designed to provide you with a variety of trial-size antibodies in a convenient and cost-effective format.</p> <p>Directly conjugated versions of our antibodies are available and ready to use for multicolor flow cytometry or immunocytochemistry analysis. <u>Carrier-free formulations</u> are also available for easy conjugation to labels of your choice. Please refer to the ‘Associated products’ section below.</p>

性能

存放说明Store at -20°C. Please refer to protocols.

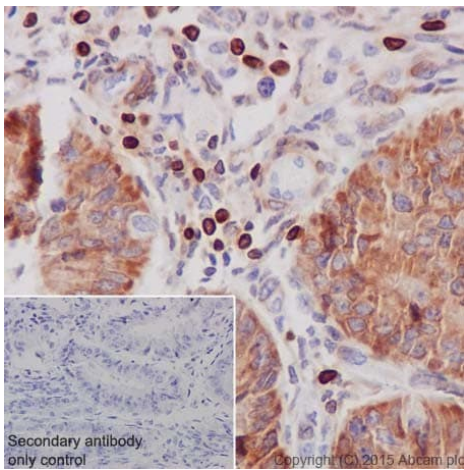
组件	1 kit
ab32445 - Anti-Bad antibody [Y208]	1 x 10µl
ab32503 - Anti-Bax antibody [E63]	1 x 10µl
ab182858 - Anti-Bcl-2 antibody [EPR17509]	1 x 10µl
ab32370 - Anti-Bcl-XL antibody [E18]	1 x 10µl
ab32087 - Anti-MCL1 antibody [Y37]	1 x 10µl
ab205718 - Goat Anti-Rabbit IgG H+L (HRP)	1 x 100µg

图片



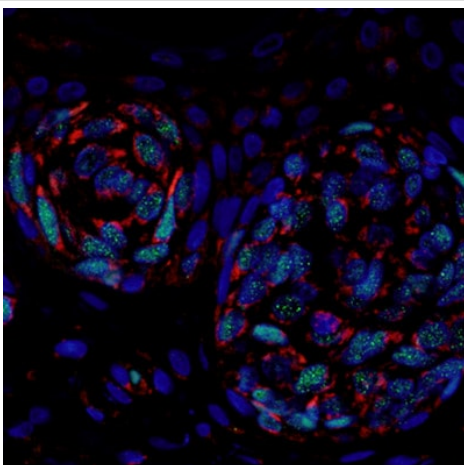
Anti-MCL1 antibody [Y37]

Immunocytochemistry/Immunofluorescence analysis of H1299 cells labelling MCL1 with unpurified **ab32087**. Cells were PFA-fixed and permeabilized in 0.5% Triton X-100 prior to blocking in 3% Serum for 1 hour at 24°C. The primary antibody was diluted 1/100 and incubated with the sample for 1 hour at 24°C. The secondary antibody was an Alexa Fluor® 488-conjugated Goat anti-Rabbit polyclonal, diluted 1/2000. DAPI (blue) was used as the nuclear counterstain.



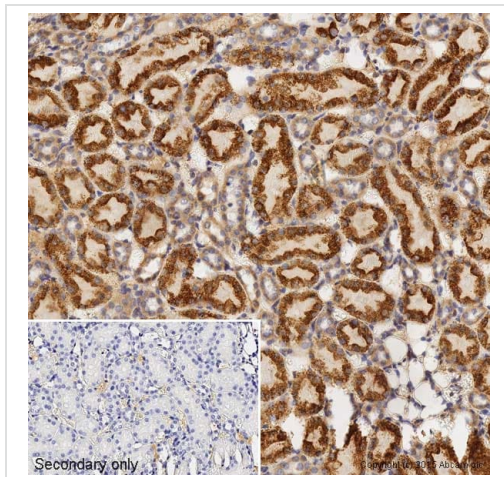
Anti-Bcl-2 antibody [EPR17509]

Immunohistochemical analysis of paraffin-embedded Human endometrial cancer tissue labeling Bcl-2 with **ab182858** at 1/1000 followed by Goat Anti-Rabbit IgG H&L (HRP) (**ab97051**) at 1/500. Cytoplasm, nuclear membrane and nucleus staining on lymphocytes and cancer cells of Human endometrial cancer tissue is observed. Counter stained with Hematoxylin. Negative control: Used PBS instead of primary antibody followed by **ab97051** at 1/500.



Anti-Bcl-XL antibody [E18]

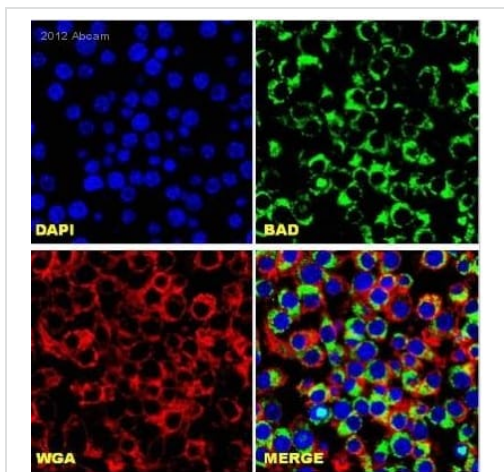
Immunohistochemistry of human primary melanoma, staining Bcl-XL (red) with unpurified **ab32370**. Antigen retrieval was performed in EDTA/Tris buffer (pH 8) before being blocked with 10%NGS for one hour at room temperature. Samples were incubated with primary antibody (1/50) at room temperature for one hour. An AlexaFluor®-conjugated anti-rabbit IgG was used as the secondary antibody.



Anti-Bax antibody [E63]

IHC image of **ab32503** staining Bax in rat kidney formalin fixed paraffin embedded tissue sections, performed on a Leica Bond. The section was pre-treated using heat mediated antigen retrieval with sodium citrate buffer (pH6, epitope retrieval solution 1) for 20 mins. The section was then incubated with **ab32503**, 1:250 dilution, for 15 mins at room temperature and detected using an HRP conjugated compact polymer system. DAB was used as the chromogen. The section was then counterstained with haematoxylin and mounted with DPX. No primary antibody was used in the secondary only control (shown on the inset).

For other IHC staining systems (automated and non-automated) customers should optimize variable parameters such as antigen retrieval conditions, primary antibody concentration and antibody incubation times.



Anti-Bad antibody [Y208]

Immunocytochemical analysis of 2% paraformaldehyde-fixed, 0.1% Triton-X100 permeabilized RAW 264.7 labeling Bad with **ab32445** at 1/250 dilution, followed by Goat Anti-Rabbit IgG H&L (Alexa Fluor® 568) secondary antibody at 1/1000 dilution.

Why choose a recombinant antibody?



Research with confidence
Consistent and reproducible results



Long-term and scalable supply
Recombinant technology



Success from the first experiment
Confirmed specificity



Ethical standards compliant
Animal-free production

Pro-Apoptosis Bcl Family Antibody Sampler Panel
(ab228527)

Please note: All products are "FOR RESEARCH USE ONLY. NOT FOR USE IN DIAGNOSTIC PROCEDURES"

Our Abpromise to you: Quality guaranteed and expert technical support

- Replacement or refund for products not performing as stated on the datasheet
- Valid for 12 months from date of delivery
- Response to your inquiry within 24 hours
- We provide support in Chinese, English, French, German, Japanese and Spanish
- Extensive multi-media technical resources to help you
- We investigate all quality concerns to ensure our products perform to the highest standards

If the product does not perform as described on this datasheet, we will offer a refund or replacement. For full details of the Abpromise, please visit <https://www.abcam.cn/abpromise> or contact our technical team.

Terms and conditions

- Guarantee only valid for products bought direct from Abcam or one of our authorized distributors