

### ErbB2 / HER2 Antibody Panel (EP1045Y, EPR19547-12, SP3, SP101, CAL27) ab252204

重组

6 图像

#### 概述

##### 产品名称

ErbB2 / HER2抗体组合(EP1045Y, EPR19547-12, SP3, SP101, CAL27)

##### 种属反应性

与反应: Human

##### 产品概述

ErbB2 / HER2 Antibody Panel ab252204 contains multiple trial-sized versions of anti-human antibody clones against ErbB2 / HER2, specifically selected for high performance in IHC. This panel contains 5 recombinant rabbit monoclonal antibodies against human ErbB2 / HER2. They are provided in trial sizes to allow you to easily evaluate which is the best ErbB2 / HER2 antibody for your IHC research assay needs.

For guidelines on how to use each antibody within the panel, please consult the individual datasheet for each antibody.

Panel contains:

- Rabbit monoclonal [CAL27] to ErbB2 / HER2 (20 µL) [ab237715](#)

- Rabbit monoclonal [EP1045Y] to ErbB2 / HER2 (20 µL) [ab134182](#)

- Rabbit monoclonal [EPR19547-12] to ErbB2 / HER2 (20 µL) [ab214275](#)

- Rabbit monoclonal [SP101] to ErbB2 / HER2 (20 µL) [ab231438](#)

- Rabbit monoclonal [SP3] to ErbB2 / HER2 (20 µL) [ab16662](#)

Anti-ErbB2 / HER2 antibody [EPR19547-12] ([ab214275](#)) could recognize ErbB2 and weak cross reaction with ErbB4.

##### 说明

**Explore our range of antibody sample panels** designed to provide you with a variety of trial-size antibodies in a convenient and cost-effective format.

**Carrier-free formulations** of our recombinant antibodies are available and ready to use for multiplex IHC analysis including Imaging Mass Cytometry™. Please refer to the 'Associated

products' section below.

## 性能

### 存放说明

Store at -20°C. Please refer to protocols.

组件	1 kit
<a href="#">ab237715 - Anti-ErbB 2 antibody [CAL27]</a>	2 x 10µl
<a href="#">ab134182 - Anti-ErbB 2 antibody [EP1045Y]</a>	2 x 10µl
<a href="#">ab214275 - Anti-ErbB 2 antibody [EPR19547-12]</a>	2 x 10µl
<a href="#">ab231438 - Anti-ErbB 2 antibody [SP101]</a>	2 x 10µl
<a href="#">ab16662 - Anti-ErbB 2 antibody [SP3]</a>	2 x 10µl

### 功能

Protein tyrosine kinase that is part of several cell surface receptor complexes, but that apparently needs a coreceptor for ligand binding. Essential component of a neuregulin-receptor complex, although neuregulins do not interact with it alone. GP30 is a potential ligand for this receptor. Regulates outgrowth and stabilization of peripheral microtubules (MTs). Upon ERBB2 activation, the MEMO1-RHOA-DIAPH1 signaling pathway elicits the phosphorylation and thus the inhibition of GSK3B at cell membrane. This prevents the phosphorylation of APC and CLASP2, allowing its association with the cell membrane. In turn, membrane-bound APC allows the localization of MACF1 to the cell membrane, which is required for microtubule capture and stabilization. In the nucleus is involved in transcriptional regulation. Associates with the 5'-TCAAATTC-3' sequence in the PTGS2/COX-2 promoter and activates its transcription. Implicated in transcriptional activation of CDKN1A; the function involves STAT3 and SRC. Involved in the transcription of rRNA genes by RNA Pol I and enhances protein synthesis and cell growth.

### 组织特异性

Expressed in a variety of tumor tissues including primary breast tumors and tumors from small bowel, esophagus, kidney and mouth.

### 疾病相关

Hereditary diffuse gastric cancer  
Glioma  
Ovarian cancer  
Lung cancer  
Gastric cancer  
Chromosomal aberrations involving ERBB2 may be a cause gastric cancer. Deletions within 17q12 region producing fusion transcripts with CDK12, leading to CDK12-ERBB2 fusion leading to truncated CDK12 protein not in-frame with ERBB2.

### 序列相似性

Belongs to the protein kinase superfamily. Tyr protein kinase family. EGF receptor subfamily. Contains 1 protein kinase domain.

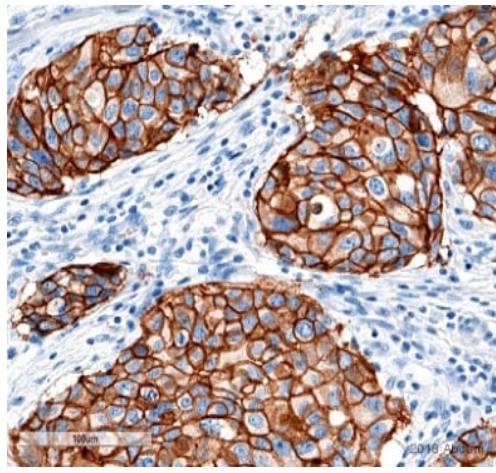
### 翻译后修饰

Autophosphorylated. Autophosphorylation occurs in trans, i.e. one subunit of the dimeric receptor phosphorylates tyrosine residues on the other subunit (Probable). Ligand-binding increases phosphorylation on tyrosine residues (PubMed:27134172). Signaling via SEMA4C promotes phosphorylation at Tyr-1248 (PubMed:17554007). Dephosphorylated by PTPN12 (PubMed:27134172).

### 细胞定位

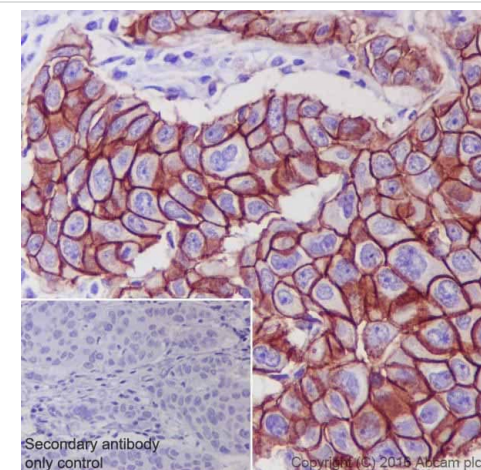
Cytoplasm. Nucleus and Cell membrane. Cytoplasm, perinuclear region. Nucleus. Translocation to the nucleus requires endocytosis, probably endosomal sorting and is mediated by importin

## 图片



Immunohistochemistry (Formalin/PFA-fixed paraffin-embedded sections) - Anti-ErbB 2 [SP3]

Formalin-fixed, paraffin-embedded human breast, invasive ductal carcinoma tissue stained for ErbB2 / HER2 using [ab16662](#) at 1/200 dilution in immunohistochemical analysis, followed by Goat anti Rabbit IgG HRP.



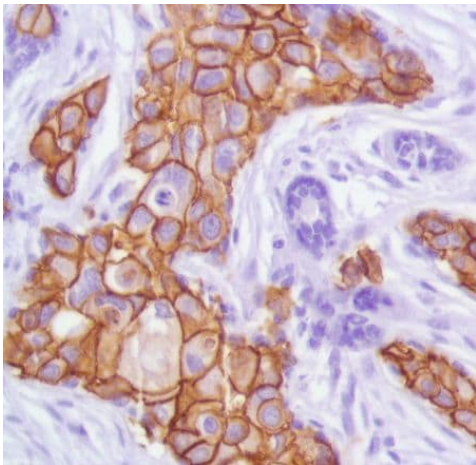
Immunohistochemistry (Formalin/PFA-fixed paraffin-embedded sections) - Anti-ErbB 2 [EPR19547-12]

Immunohistochemical analysis of paraffin-embedded Human breast cancer tissue labeling ErbB2 / HER2 with [ab214275](#) at 1/4000 dilution, followed by Goat Anti-Rabbit IgG H&L (HRP) ([ab97051](#)) at 1/500 dilution.

Membrane staining on Human breast cancer is observed [PMID: 18437174].

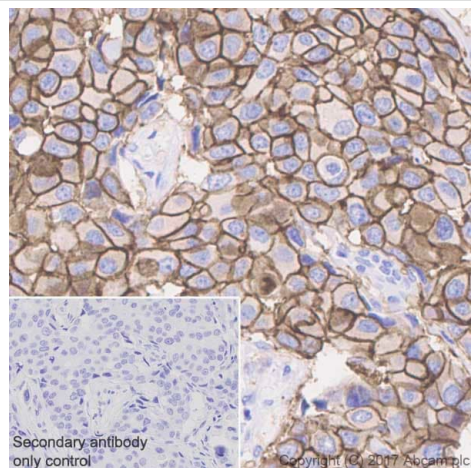
Counter stained with Hematoxylin.

Secondary antibody only control: Used PBS instead of primary antibody, secondary antibody is [ab97051](#) at 1/500 dilution.



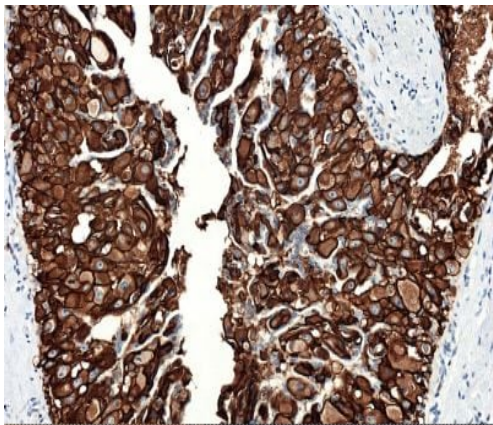
Immunohistochemistry (Formalin/PFA-fixed paraffin-embedded sections) - Anti-ErbB 2 [SP101]

Formalin-fixed, paraffin-embedded human breast carcinoma tissue stained for ErbB2 / HER2 using **ab231438** at 1/100 dilution in immunohistochemical analysis.



Immunohistochemistry (Formalin/PFA-fixed paraffin-embedded sections) - Anti-ErbB 2 [EP1045Y]

Immunohistochemistry (Formalin/PFA-fixed paraffin-embedded sections) analysis of Human breast carcinoma tissue sections labeling ErbB2 / HER2 with Purified **ab134182** at 1:1600 dilution (0.68 µg/ml). Heat mediated antigen retrieval was performed using Perform heat mediated antigen retrieval using **ab93684** (Tris/EDTA buffer, pH 9.0). Tissue was counterstained with Hematoxylin. ImmunoHistoProbe one step HRP Polymer (ready to use) secondary antibody was used at 1:0 dilution. PBS instead of the primary antibody was used as the negative control.



Formalin-fixed, paraffin-embedded human breast carcinoma tissue stained for ErbB2 / HER2 using **ab237715** at 0.3 µg/ml in immunohistochemical analysis.

Immunohistochemistry (Formalin/PFA-fixed paraffin-embedded sections) - Anti-ErbB 2 [CAL27]

#### Why choose a recombinant antibody?



**Research with confidence**  
Consistent and reproducible results



**Long-term and scalable supply**  
Recombinant technology



**Success from the first experiment**  
Confirmed specificity



**Ethical standards compliant**  
Animal-free production

ErbB2 / HER2 Antibody Panel (EP1045Y, EPR19547-12, SP3, SP101, CAL27) (ab252204)

**Please note:** All products are "FOR RESEARCH USE ONLY. NOT FOR USE IN DIAGNOSTIC PROCEDURES"

#### Our Abpromise to you: Quality guaranteed and expert technical support

- Replacement or refund for products not performing as stated on the datasheet
- Valid for 12 months from date of delivery
- Response to your inquiry within 24 hours
- We provide support in Chinese, English, French, German, Japanese and Spanish
- Extensive multi-media technical resources to help you
- We investigate all quality concerns to ensure our products perform to the highest standards

If the product does not perform as described on this datasheet, we will offer a refund or replacement. For full details of the Abpromise, please visit <https://www.abcam.cn/abpromise> or contact our technical team.

#### **Terms and conditions**

---

- Guarantee only valid for products bought direct from Abcam or one of our authorized distributors