

Human Atherosclerosis Antibody Array - Membrane (20 targets) ab169803

1 图像

概述

产品名称	人Atherosclerosis抗体阵列-膜(20 targets)
样品类型	Cell culture supernatant, Saliva, Milk, Urine, Serum, Plasma, Cell culture extracts, Other biological fluids, Whole Blood, Tissue Extracts, Cell Lysate, Cell culture media
检测类型	Semi-quantitative
种属反应性	与反应: Human
产品概述	ab169803 detects 20 Human Atherosclerotic Factors in 4 or 8 samples. Suitable for all liquid sample types. Targets: Eotaxin-1, G-CSF, GDNF, GM-CSF, ICAM-1, IFN-gamma, IL-1 alpha, IL-1 beta, IL-1 sRI, IL-1 sRII, MCP-1, M-CSF, TGF beta 1, TGF beta 2, TGF beta 3, TNF alpha, TNF beta, MIP-3 alpha, PDGF-BB, RANTES

[Learn more about membrane antibody arrays](#)

说明	If you are interested in this cytokine array, arrays ab169817 , ab133998 and ab169809 may also be of interest. A list of human antibody membrane arrays is available here . Abcam has not and does not intend to apply for the REACH Authorisation of customers' uses of products that contain European Authorisation list (Annex XIV) substances. It is the responsibility of our customers to check the necessity of application of REACH Authorisation, and any other relevant authorisations, for their intended uses.
----	--

经测试应用	适用于: Multiplex Protein Detection
-------	----------------------------------

性能

存放说明	Store at -20°C. Please refer to protocols.
------	--

组件	1 x 4 Membranes	1 x 8 Membranes
1,000X HRP-Conjugated Streptavidin	1 x 50µl	1 x 50µl

组件	1 x 4 Membranes	1 x 8 Membranes
1X Blocking Buffer	1 x 25ml	2 x 25ml
2000X Biotin-Conjugated Anti Cytokines	2 vials	4 vials
20X Wash Buffer I	1 x 10ml	1 x 20ml
20X Wash Buffer II	1 x 10ml	1 x 20ml
2X Cell Lysis Buffer	1 x 10ml	1 x 16ml
8-Well Incubation Tray (with Lid)	1 unit	1 unit
Atherosclerosis Antibody Array Membranes	4 units	8 units
Detection Buffer C	1 x 1.5ml	1 x 2.5ml
Detection Buffer D	1 x 1.5ml	1 x 2.5ml

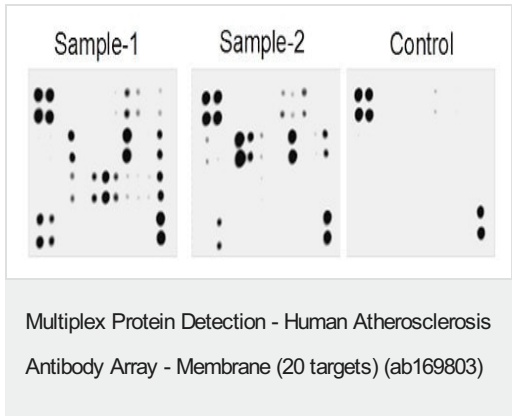
应用

The Abpromise guarantee **Abpromise™**承诺保证使用ab169803于以下的经测试应用

“应用说明”部分 下显示的仅为推荐的起始稀释度;实际最佳的稀释度/浓度应由使用者检定。

应用	Ab评论	说明
Multiplex Protein Detection		Use at an assay dependent concentration.

图片



Typical results obtained with Abcam Membrane Antibody Arrays. Image above presents typical images obtained with Abcam Human Cytokine Membrane Antibody Array. These membranes were probed with conditioned media from two different cell lines. Membranes were exposed to film at RT for 1 min.

Please note: All products are "FOR RESEARCH USE ONLY. NOT FOR USE IN DIAGNOSTIC PROCEDURES"

Our Abpromise to you: Quality guaranteed and expert technical support

- Replacement or refund for products not performing as stated on the datasheet
- Valid for 12 months from date of delivery
- Response to your inquiry within 24 hours
- We provide support in Chinese, English, French, German, Japanese and Spanish
- Extensive multi-media technical resources to help you
- We investigate all quality concerns to ensure our products perform to the highest standards

If the product does not perform as described on this datasheet, we will offer a refund or replacement. For full details of the Abpromise, please visit <https://www.abcam.cn/abpromise> or contact our technical team.

Terms and conditions

- Guarantee only valid for products bought direct from Abcam or one of our authorized distributors