


Product datasheet

Anti-p66 beta antibody ab75280

2 图像

概述

产品名称	Anti-p66 beta抗体
描述	兔多克隆抗体to p66 beta
宿主	Rabbit
经测试应用	适用于: IHC-P, IP 不适用于: WB
种属反应性	与反应: Human 预测可用于: Mouse, Rat, Rabbit, Horse, Guinea pig, Cow, Pig, Chimpanzee, Rhesus monkey, Gorilla, Elephant 
免疫原	Synthetic peptide corresponding to a region between residues 543 and 593 of human p66 beta (NP_065750.1)
阳性对照	HeLa whole cell lysate.

性能

形式	Liquid
存放说明	Shipped at 4°C. Upon delivery aliquot and store at -20°C. Avoid freeze / thaw cycles.
存储溶液	Preservative: 0.09% Sodium azide Constituents: 1.815% Tris, 1.764% Sodium citrate, 0.021% PBS
纯度	Immunogen affinity purified
纯化说明	ab75280 was affinity purified using an epitope specific to p66beta immobilized on solid support.
克隆	多克隆
同种型	IgG

应用

Our [Abpromise guarantee](#) covers the use of **ab75280** in the following tested applications.

The application notes include recommended starting dilutions; optimal dilutions/concentrations should be determined by the end user.

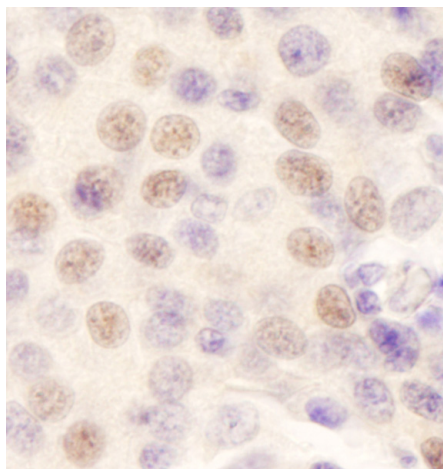
应用	Ab评论	说明
IHC-P		1/500 - 1/2000. Perform heat mediated antigen retrieval with citrate buffer pH 6 before commencing with IHC staining protocol.
IP		Use at 2-5 µg/mg of lysate.

应用说明 Is unsuitable for WB.

靶标

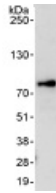
功能	Has transcriptional repressor activity. Targets MBD3 to discrete loci in the nucleus.
组织特异性	Ubiquitous.
序列相似性	Contains 1 GATA-type zinc finger.
结构域	CR1 is required for interaction with MBD3 and transcription repression. CR2 is required for localization to discrete loci in the nucleus.
细胞定位	Nucleus. Nuclear, in discrete foci.

图片



Immunohistochemistry (Formalin/PFA-fixed paraffin-embedded sections) analysis of human breast carcinoma tissue labelling p66 beta with ab75280 at 1/200 (1µg/ml). Detection: DAB.

Immunohistochemistry (Formalin/PFA-fixed paraffin-embedded sections) - Anti-p66 beta antibody (ab75280)



Immunoprecipitation - Anti-p66 beta antibody
(ab75280)

Detection of p66 beta by Western Blot of Immunoprecipitate. anti-p66 beta at 1 µg/ml staining p66 beta in HeLa whole cell lysate immunoprecipitated using ab75280 at 3 µg/mg lysate (1 mg/IP; 20% of IP loaded/lane). Detection: Chemiluminescence with exposure time of 10 seconds.

Please note: All products are "FOR RESEARCH USE ONLY AND ARE NOT INTENDED FOR DIAGNOSTIC OR THERAPEUTIC USE"

Our Abpromise to you: Quality guaranteed and expert technical support

- Replacement or refund for products not performing as stated on the datasheet
- Valid for 12 months from date of delivery
- Response to your inquiry within 24 hours
- We provide support in Chinese, English, French, German, Japanese and Spanish
- Extensive multi-media technical resources to help you
- We investigate all quality concerns to ensure our products perform to the highest standards

If the product does not perform as described on this datasheet, we will offer a refund or replacement. For full details of the Abpromise, please visit <https://www.abcam.cn/abpromise> or contact our technical team.

Terms and conditions

- Guarantee only valid for products bought direct from Abcam or one of our authorized distributors