

Product datasheet

Anti-p38 antibody ab27986

★★★★★ 2 Abreviews 14 References 2 图像

概述

| | |
|-------|---|
| 产品名称 | Anti-p38抗体 |
| 描述 | 兔多克隆抗体to p38 |
| 宿主 | Rabbit |
| 特异性 | ab27986 detects total p38 MAP kinase. Does not cross react with either JNK/SAPK or p44/42 MAP kinase. |
| 经测试应用 | 适用于: WB, IP, IHC-Fr |
| 种属反应性 | 与反应: Mouse, Rat, Human |
| 免疫原 | Synthetic peptide (Human)(Peptide available as ab53314 .) |
| 阳性对照 | Jurkat cell lysate |

性能

| | |
|------|---|
| 形式 | Liquid |
| 存放说明 | Shipped at 4°C. Upon delivery aliquot. Avoid freeze / thaw cycle. |
| 存储溶液 | Preservative: 0.02% Thimerosal (merthiolate) Constituents: PBS, 50% Glycerol, 1% BSA |
| 纯度 | Immunogen affinity purified |
| 克隆 | 多克隆 |
| 同种型 | IgG |

应用

Our [Abpromise guarantee](#) covers the use of **ab27986** in the following tested applications.

The application notes include recommended starting dilutions; optimal dilutions/concentrations should be determined by the end user.

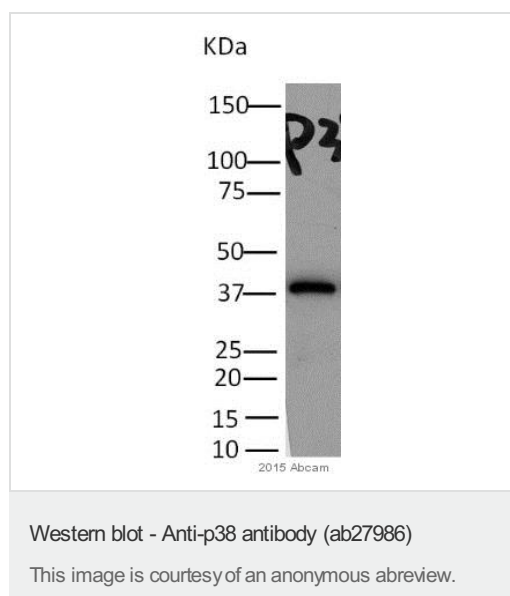
| 应用 | Ab评论 | 说明 |
|----|-------|--|
| WB | ★★★★★ | Use a concentration of 1 - 2 µg/ml. Detects a band of approximately 38 kDa (predicted molecular weight: 41 kDa). Can be blocked with p38 peptide (ab53314) . |

| 应用 | Ab评论 | 说明 |
|--------|------|--|
| IP | | Use a concentration of 10 - 20 µg/ml. |
| IHC-Fr | | Use at an assay dependent concentration. |

靶标

| | |
|--------------|--|
| 功能 | Responds to activation by environmental stress, pro-inflammatory cytokines and lipopolysaccharide (LPS) by phosphorylating a number of transcription factors, such as ELK1 and ATF2 and several downstream kinases, such as MAPKAPK2 and MAPKAPK5. Plays a critical role in the production of some cytokines, for example IL-6. May play a role in stabilization of EPO mRNA during hypoxic stress. Isoform Mxi2 activation is stimulated by mitogens and oxidative stress and only poorly phosphorylates ELK1 and ATF2. Isoform Exip may play a role in the early onset of apoptosis. |
| 组织特异性 | Brain, heart, placenta, pancreas and skeletal muscle. Expressed to a lesser extent in lung, liver and kidney. |
| 序列相似性 | Belongs to the protein kinase superfamily. CMGC Ser/Thr protein kinase family. MAP kinase subfamily. Contains 1 protein kinase domain. |
| 结构域 | The TXY motif contains the threonine and tyrosine residues whose phosphorylation activates the MAP kinases. |
| 翻译后修饰 | Dually phosphorylated on Thr-180 and Tyr-182, which activates the enzyme. Phosphorylated upon DNA damage, probably by ATM or ATR. |
| 细胞定位 | Cytoplasm. Nucleus. |

图片



Anti-p38 antibody (ab27986) at 1/500 dilution + mouse retina whole tissue lysate at 40 µg

Secondary

Polyclonal Goat anti-rabbit IgG-HRP at 1/200 dilution

Developed using the ECL technique.

Performed under non-reducing conditions.

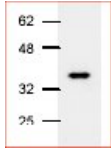
Predicted band size: 41 kDa

Observed band size: 38 kDa

[why is the actual band size different from the predicted?](#)

Exposure time: 2 hours

Blocking buffer: 3% BSA



Western blot - Anti-p38 antibody (ab27986)

Anti-p38 antibody (ab27986) at 2 µg/ml (Jurkat cell lysate)

Predicted band size: 41 kDa

Observed band size: 38 kDa [why is the actual band size different from the predicted?](#)

Please note: All products are "FOR RESEARCH USE ONLY AND ARE NOT INTENDED FOR DIAGNOSTIC OR THERAPEUTIC USE"

Our Abpromise to you: Quality guaranteed and expert technical support

- Replacement or refund for products not performing as stated on the datasheet
- Valid for 12 months from date of delivery
- Response to your inquiry within 24 hours
- We provide support in Chinese, English, French, German, Japanese and Spanish
- Extensive multi-media technical resources to help you
- We investigate all quality concerns to ensure our products perform to the highest standards

If the product does not perform as described on this datasheet, we will offer a refund or replacement. For full details of the Abpromise, please visit <https://www.abcam.cn/abpromise> or contact our technical team.

Terms and conditions

- Guarantee only valid for products bought direct from Abcam or one of our authorized distributors