

## Product datasheet

# Anti-Lysozyme antibody ab2408

★★★★★ 2 Abreviews 3 References 2 图像

### 概述

---

|              |   |
|--------------|---|
| <b>产品名称</b>  | Anti-Lysozyme抗体   |
| <b>描述</b>    | 兔多克隆抗体to Lysozyme   |
| <b>宿主</b>    | Rabbit  |
| <b>经测试应用</b> | <b>适用于:</b> IHC-P   |
| <b>种属反应性</b> | <b>与反应:</b> Human   |
| <b>免疫原</b>   | Full length native protein (purified) corresponding to Human Lysozyme. Lysozyme isolated from urine of patients with monocytic leukemia.  |
| <b>常规说明</b>  | <p>The Life Science industry has been in the grips of a reproducibility crisis for a number of years. Abcam is leading the way in addressing this with our range of recombinant monoclonal antibodies and knockout edited cell lines for gold-standard validation. Please check that this product meets your needs before purchasing.</p> <p>If you have any questions, special requirements or concerns, please send us an inquiry and/or contact our Support team ahead of purchase. Recommended alternatives for this product can be found below, along with publications, customer reviews and Q&amp;As</p> |

### 性能

---

|             |   |
|-------------|---|
| <b>形式</b>   | Liquid  |
| <b>存放说明</b> | Shipped at 4°C. Store at +4°C short term (1-2 weeks). Store at -20°C or -80°C. Avoid freeze / thaw cycle. |
| <b>存储溶液</b> | pH: 7.3<br>Preservative: 0.05% Sodium azide<br>Constituent: 1% BSA  |
| <b>纯度</b>   | Proprietary Purification  |
| <b>克隆</b>   | 多克隆   |
| <b>同种型</b>  | unknown   |
| <b>轻链类型</b> | unknown   |

### 应用

---

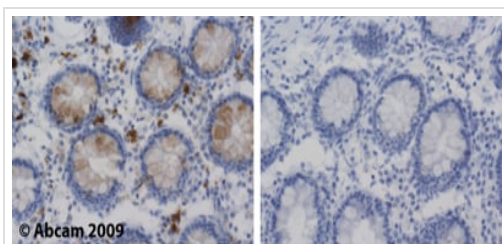
“应用说明”部分 下显示的仅为推荐的起始稀释度;实际最佳的稀释度/浓度应由使用者检定。

| 应用    | Ab评论      | 说明            |
|-------|-----------|---------------|
| IHC-P | ★★★★☆ (1) | 1/50 - 1/100. |

## 靶标

|       |  |
|-------|--|
| 功能    | Lysozymes have primarily a bacteriolytic function; those in tissues and body fluids are associated with the monocyte-macrophage system and enhance the activity of immunoagents. |
| 疾病相关  | Amyloidosis 8  |
| 序列相似性 | Belongs to the glycosyl hydrolase 22 family.   |
| 细胞定位  | Secreted.  |

## 图片

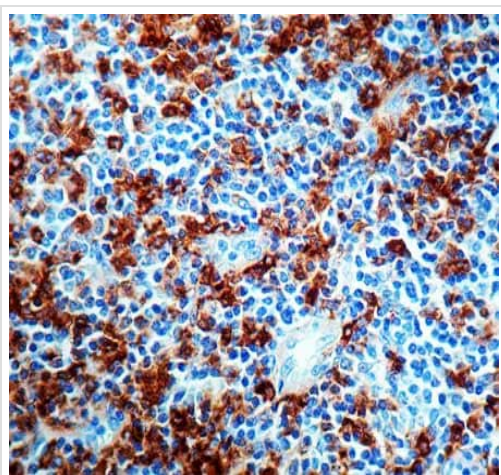


Immunohistochemistry (Formalin/PFA-fixed paraffin-embedded sections) - Anti-Lysozyme antibody (ab2408)

Ab2408 staining lysozyme in human colon. Staining is localised to cytoplasm.

Left panel: with primary antibody at 2 ug/ml. Right panel: isotype control.

Sections were stained using an automated system (DAKO Autostainer Plus), at room temperature: sections were rehydrated and antigen retrieved with the Dako 3 in 1 AR buffer EDTA pH 9.0 in a DAKO PT Link. Slides were peroxidase blocked in 3% H<sub>2</sub>O<sub>2</sub> in methanol for 10 mins. They were then blocked with Dako Protein block for 10 minutes (containing casein 0.25% in PBS) then incubated with primary antibody for 20 min and detected with Dako envision flex amplification kit for 30 minutes. Colorimetric detection was completed with Diaminobenzidine for 5 minutes. Slides were counterstained with Haematoxylin and coverslipped under DePeX. Please note that for manual staining we recommend to optimize the primary antibody concentration and incubation time (overnight incubation), and amplification may be required.



Immunohistochemical analysis of formalin-fixed, paraffin-embedded Human tonsil tissue, staining Lysozyme with ab2408.

Immunohistochemistry (Formalin/PFA-fixed paraffin-embedded sections) - Anti-Lysozyme antibody (ab2408)

**Please note:** All products are "FOR RESEARCH USE ONLY. NOT FOR USE IN DIAGNOSTIC PROCEDURES"

### Our Abpromise to you: Quality guaranteed and expert technical support

---

- Replacement or refund for products not performing as stated on the datasheet
- Valid for 12 months from date of delivery
- Response to your inquiry within 24 hours
- We provide support in Chinese, English, French, German, Japanese and Spanish
- Extensive multi-media technical resources to help you
- We investigate all quality concerns to ensure our products perform to the highest standards

If the product does not perform as described on this datasheet, we will offer a refund or replacement. For full details of the Abpromise, please visit <https://www.abcam.cn/abpromise> or contact our technical team.

### Terms and conditions

---

- Guarantee only valid for products bought direct from Abcam or one of our authorized distributors