

Product datasheet

Anti-GRK1 antibody [G8] ab2775

2 References 4 图像

概述

<b>产品名称</b>	Anti-GRK1 抗体[G8]
<b>描述</b>	小鼠单克隆抗体[G8] to GRK1
<b>宿主</b>	Mouse
<b>特异性</b>	Detects G-protein-associated rhodopsin kinase 1a (GRK1a).
<b>经测试应用</b>	<b>适用于:</b> ICC/IF
<b>种属反应性</b>	<b>与反应:</b> Mouse, Cow, Human
<b>免疫原</b>	Full length native protein (purified) corresponding to Human GRK1.
<b>表位</b>	This antibody recognizes an epitope in the C-terminal region of GRK1a.
<b>常规说明</b>	<p>The Life Science industry has been in the grips of a reproducibility crisis for a number of years. Abcam is leading the way in addressing this with our range of recombinant monoclonal antibodies and knockout edited cell lines for gold-standard validation. Please check that this product meets your needs before purchasing.</p> <p>If you have any questions, special requirements or concerns, please send us an inquiry and/or contact our Support team ahead of purchase. Recommended alternatives for this product can be found below, along with publications, customer reviews and Q&amp;As</p>

性能

<b>形式</b>	Liquid
<b>存放说明</b>	Shipped at 4°C. Store at +4°C short term (1-2 weeks). Upon delivery aliquot. Store at -20°C or -80°C. Avoid freeze / thaw cycle.
<b>存储溶液</b>	Preservative: 0.05% Sodium azide
<b>纯度</b>	Protein G purified
<b>Primary antibody说明</b>	<p>The sensation of sight is the result of a cascade of events starting with the interaction of photoactivated rhodopsin with a protein called transducin. Rhodopsin kinase is a G-protein-coupled Ser/Thr kinase, also known as GRK1, which is a key element in the regulation of this cascade. Following phosphorylation by GRK1, arrestin is recruited to phospho-rhodopsin quenching its phototransductive activity by preventing further interaction with transducin. By breaking the cycle of phototransduction, GRK1 plays an important role in the restoration of the system for subsequent visual events.</p>
<b>克隆</b>	单克隆

克隆编号 G8  
同种型 IgG1

## 应用

**The Abpromise guarantee** [Abpromise™](#) 承诺保证使用ab2775于以下的经测试应用

“应用说明”部分 下显示的仅为推荐的起始稀释度;实际最佳的稀释度/浓度应由使用者检定。

应用	Ab评论	说明
ICC/IF		1/100 - 1/200.

## 靶标

**功能** Retina-specific kinase involved in the signal turnoff via phosphorylation of rhodopsin (RHO), the G protein- coupled receptor that initiates the phototransduction cascade. This rapid desensitization is essential for scotopic vision and permits rapid adaptation to changes in illumination.

**组织特异性** Retinal-specific. Expressed in rods and cones cells.

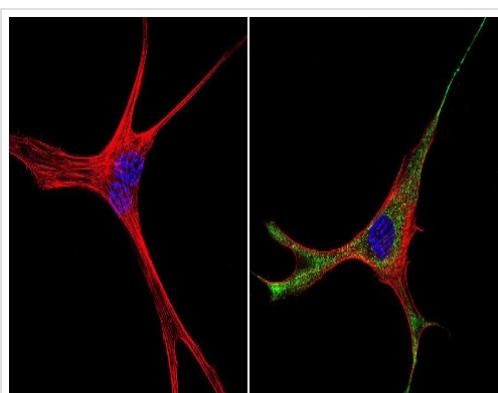
**疾病相关** Night blindness, congenital stationary, Oguchi type 2

**序列相似性** Belongs to the protein kinase superfamily. AGC Ser/Thr protein kinase family. GPRK subfamily. Contains 1 AGC-kinase C-terminal domain. Contains 1 protein kinase domain. Contains 1 RGS domain.

**翻译后修饰** Autophosphorylated, Ser-21 is a minor site of autophosphorylation compared to Ser-491 and Thr-492 (By similarity). Phosphorylation at Ser-21 is regulated by light and activated by cAMP. Farnesylation is required for full activity.

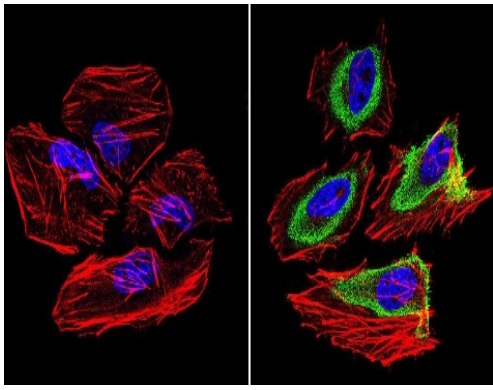
**细胞定位** Membrane.

## 图片



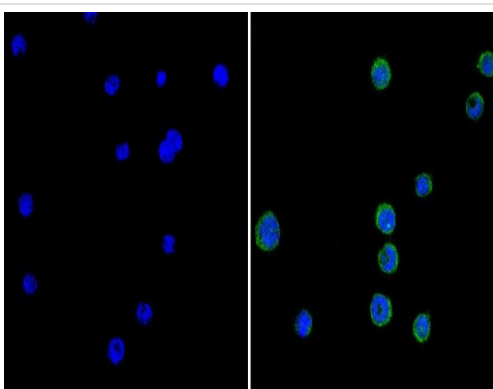
Immunocytochemistry/ Immunofluorescence - Anti-GRK1 antibody [G8] (ab2775)

Immunocytochemistry/Immunofluorescence analysis of GRK1 (green) in murine cells. Formalin-fixed cells were permeabilized with 0.1% Triton X-100 in TBS for 5-10 minutes at room temperature and blocked with 3% BSA-PBS for 30 minutes at room temperature. Cells were incubated with ab2775 (1:200) overnight in a humidified chamber. Cells were washed with PBST and incubated with a DyLight-conjugated secondary antibody for 45 minutes at room temperature in the dark. F-actin (red) was stained with a fluorescent phalloidin and nuclei (blue) were stained with DAPI. Images were taken at a 60X magnification.



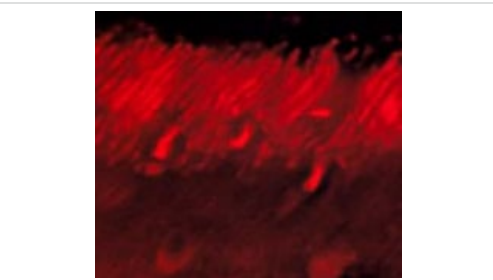
Immunocytochemistry/ Immunofluorescence - Anti-GRK1 antibody [G8] (ab2775)

Immunocytochemistry/Immunofluorescence analysis of GRK1 (green) in HeLa cells. Formalin-fixed cells were permeabilized with 0.1% Triton X-100 in TBS for 5-10 minutes at room temperature and blocked with 3% BSA-PBS for 30 minutes at room temperature. Cells were incubated with ab2775 (1:200) overnight in a humidified chamber. Cells were washed with PBST and incubated with a DyLight-conjugated secondary antibody for 45 minutes at room temperature in the dark. F-actin (red) was stained with a fluorescent phalloidin and nuclei (blue) were stained with DAPI. Images were taken at a 60X magnification.



Immunocytochemistry/ Immunofluorescence - Anti-GRK1 antibody [G8] (ab2775)

Immunocytochemistry/Immunofluorescence analysis of GRK1 (green) in human cells. Formalin-fixed cells were permeabilized with 0.1% Triton X-100 in TBS for 5-10 minutes at room temperature and blocked with 3% BSA-PBS for 30 minutes at room temperature. Cells were incubated with ab2775 (1:100) overnight in a humidified chamber. Cells were washed with PBST and incubated with a DyLight-conjugated secondary antibody for 45 minutes at room temperature in the dark. F-actin (red) was stained with a fluorescent phalloidin and nuclei (blue) were stained with DAPI. Images were taken at a 60X magnification.



Immunocytochemistry/ Immunofluorescence - Anti-GRK1 antibody [G8] (ab2775)

Immunolocalization of GRK1 in bovine retina using ab2775.

**Please note:** All products are "FOR RESEARCH USE ONLY. NOT FOR USE IN DIAGNOSTIC PROCEDURES"

**Our Abpromise to you: Quality guaranteed and expert technical support**

- Replacement or refund for products not performing as stated on the datasheet
- Valid for 12 months from date of delivery
- Response to your inquiry within 24 hours

- We provide support in Chinese, English, French, German, Japanese and Spanish
- Extensive multi-media technical resources to help you
- We investigate all quality concerns to ensure our products perform to the highest standards

If the product does not perform as described on this datasheet, we will offer a refund or replacement. For full details of the Abpromise, please visit <https://www.abcam.cn/abpromise> or contact our technical team.

### **Terms and conditions**

---

- Guarantee only valid for products bought direct from Abcam or one of our authorized distributors