


Product datasheet

Anti-glucose-6-phosphatase, catalytic subunit antibody ab83690

★★★★★ 5 Abreviews 11 References 5 图像

概述

产品名称	Anti-glucose-6-phosphatase, catalytic subunit抗体
描述	兔多克隆抗体to glucose-6-phosphatase, catalytic subunit
宿主	Rabbit
经测试应用	适用于: IHC-P, WB
种属反应性	与反应: Sheep, Human, Pig 预测可用于: Mouse, Rat, Rabbit, Horse, Guinea pig, Cow, Cat, Dog 
免疫原	Synthetic peptide within residues: NLVFKWILFG QRPYWWVLDT DYYSNTSVPL IKQFPVTCET GPGSPSGHAM , corresponding to N terminal amino acids 72-121 of Human glucose-6-phosphatase, catalytic subunit (NP_000142) Run BLAST with ExPASy Run BLAST with NCBI
阳性对照	Fetal lung lysate.

性能

形式	Liquid
存放说明	Shipped at 4°C. Upon delivery aliquot and store at -20°C. Avoid repeated freeze / thaw cycles.
存储溶液	Preservative: 0.09% Sodium azide Constituents: 2% Sucrose, PBS
纯度	Immunogen affinity purified
克隆	多克隆
同种型	IgG

应用

Our [Abpromise guarantee](#) covers the use of **ab83690** in the following tested applications.

The application notes include recommended starting dilutions; optimal dilutions/concentrations should be determined by the end user.

应用	Ab评论	说明
IHC-P		Use a concentration of 5 µg/ml.
WB	★★★★★	Use a concentration of 1 µg/ml. Detects a band of approximately 40 kDa (predicted molecular weight: 40 kDa). Good results were obtained when blocked with 5% non-fat dry milk in 0.05% PBS-T.

靶标

功能

Hydrolyzes glucose-6-phosphate to glucose in the endoplasmic reticulum. Forms with the glucose-6-phosphate transporter (SLC37A4/G6PT) the complex responsible for glucose production through glycogenolysis and gluconeogenesis. Hence, it is the key enzyme in homeostatic regulation of blood glucose levels.

通路

Carbohydrate biosynthesis; gluconeogenesis.

疾病相关

Defects in G6PC are the cause of glycogen storage disease type 1A (GSD1A) [MIM:232200]. A metabolic disorder characterized by impairment of terminal steps of glycogenolysis and gluconeogenesis. Patients manifest a wide range of clinical symptoms and biochemical abnormalities, including hypoglycemia, severe hepatomegaly due to excessive accumulation of glycogen, kidney enlargement, growth retardation, lactic acidemia, hyperlipidemia, and hyperuricemia.

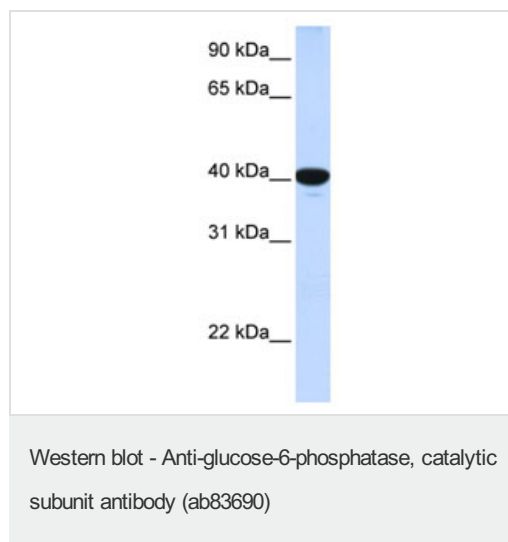
序列相似性

Belongs to the glucose-6-phosphatase family.

细胞定位

Endoplasmic reticulum membrane.

图片



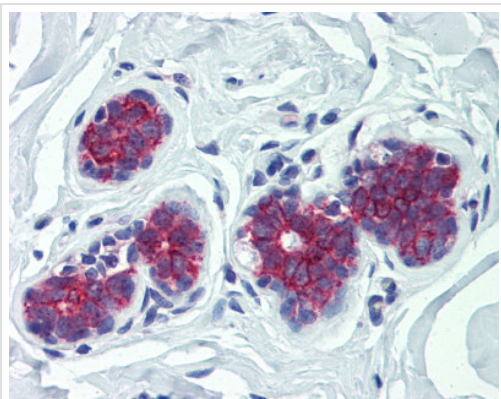
Anti-glucose-6-phosphatase, catalytic subunit antibody (ab83690) at 1 µg/ml + Fetal lung lysate at 10 µg

Secondary

HRP conjugated anti-Rabbit IgG at 1/50000 dilution

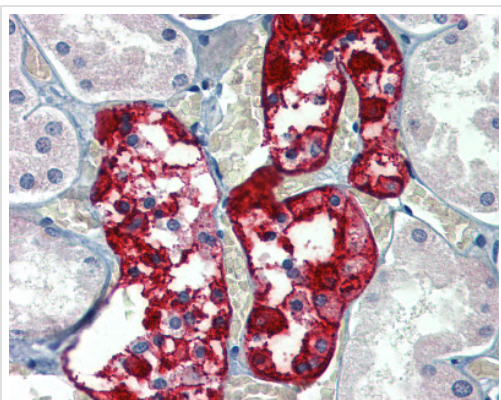
Predicted band size: 40 kDa

Observed band size: 40 kDa



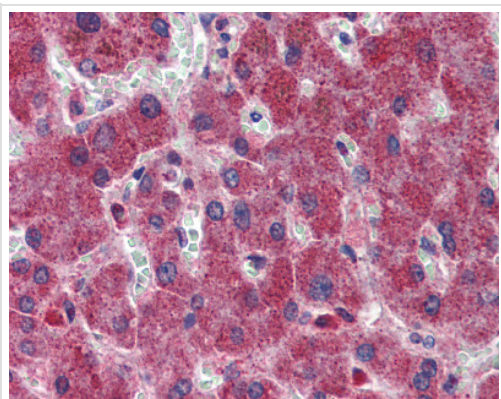
Immunohistochemistry (Formalin/PFA-fixed paraffin-embedded sections) - Anti-glucose-6-phosphatase, catalytic subunit antibody (ab83690)

ab83690 at 5 µg/ml staining glucose-6-phosphatase, catalytic subunit in Human breast tissue by Immunohistochemistry (Formalin/PFA-fixed, paraffin-embedded sections).



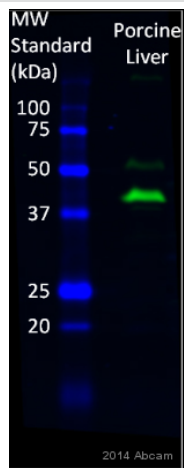
Immunohistochemistry (Formalin/PFA-fixed paraffin-embedded sections) - Anti-glucose-6-phosphatase, catalytic subunit antibody (ab83690)

ab83690 at 5 µg/ml staining glucose-6-phosphatase, catalytic subunit in Human kidney tissue by Immunohistochemistry (Formalin/PFA-fixed, paraffin-embedded sections).



Immunohistochemistry (Formalin/PFA-fixed paraffin-embedded sections) - Anti-glucose-6-phosphatase, catalytic subunit antibody (ab83690)

ab83690 at 5 µg/ml staining glucose-6-phosphatase, catalytic subunit in Human liver tissue by Immunohistochemistry (Formalin/PFA-fixed, paraffin-embedded sections).



Western blot - Anti-glucose-6-phosphatase, catalytic subunit antibody (ab83690)

This image is courtesy of an anonymous Abreview

Anti-glucose-6-phosphatase, catalytic subunit antibody (ab83690) at 1/2000 dilution + Pig liver tissue whole cell lysate at 30 µg

Secondary

IRDye® 800CW-conjugated goat anti-rabbit IgG polyclonal at 1/30000 dilution

Performed under reducing conditions.

Predicted band size: 40 kDa

Observed band size: 41 kDa

Additional bands at: 52 kDa (possible non-specific binding)

Exposure time: 5 minutes

Please note: All products are "FOR RESEARCH USE ONLY AND ARE NOT INTENDED FOR DIAGNOSTIC OR THERAPEUTIC USE"

Our Abpromise to you: Quality guaranteed and expert technical support

- Replacement or refund for products not performing as stated on the datasheet
- Valid for 12 months from date of delivery
- Response to your inquiry within 24 hours
- We provide support in Chinese, English, French, German, Japanese and Spanish
- Extensive multi-media technical resources to help you
- We investigate all quality concerns to ensure our products perform to the highest standards

If the product does not perform as described on this datasheet, we will offer a refund or replacement. For full details of the Abpromise, please visit <https://www.abcam.cn/abpromise> or contact our technical team.

Terms and conditions

- Guarantee only valid for products bought direct from Abcam or one of our authorized distributors