

Product datasheet

Anti-alpha 1 Fetoprotein antibody ab8201

1 图像

概述

产品名称	Anti-alpha 1 Fetoprotein抗体
描述	兔多克隆抗体to alpha 1 Fetoprotein
宿主	Rabbit
特异性	Specificity of the antisera is confirmed by ELISA (OPD) on human alpha-Fetoprotein versus albumin, IgG, IgM. Ouchterlony double diffusion, immunoelectrophoresis. No crossreactivity with human plasma proteins.
经测试应用	适用于: Sandwich ELISA, Other
种属反应性	与反应: Human
免疫原	Full length protein (Human).

性能

形式	Liquid
存放说明	Shipped at 4°C. Store at +4°C short term (1-2 weeks). Upon delivery aliquot. Store at -20°C long term.
存储溶液	Preservative: None Constituents: Mannitol, Dextran, salts.
纯度	Immunogen affinity purified
纯化说明	The antiserum was subjected to absorption with immobilized human albumin fraction and globulin fractions and fibrinogen in order to remove non-specific antibodies. The affinity purified antibody is obtained by binding to immobilized human alpha-Fetoprotein (antigen used for immunization), followed by elution with acidic buffer, titration, dialysis, dispensing and lyophilization.
克隆	多克隆
同种型	IgG

应用

Our [Abpromise guarantee](#) covers the use of **ab8201** in the following tested applications.

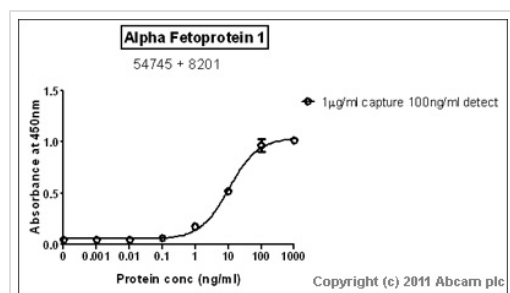
The application notes include recommended starting dilutions; optimal dilutions/concentrations should be determined by the end user.

应用	Ab评论	说明
Sandwich ELISA		Use a concentration of 0.1 µg/ml. Can be paired for Sandwich ELISA with <a href="#">Mouse monoclonal to alpha 1 Fetoprotein (ab54745)</a> . For sandwich ELISA, use this antibody as Detection at 0.1 µg/ml with <a href="#">ab54745</a> as Capture.
AP		Use at an assay dependent concentration.
Other		Use at an assay dependent concentration.

## 靶标

功能	Binds copper, nickel, and fatty acids as well as, and bilirubin less well than, serum albumin. Only a small percentage (less than 2%) of the human AFP shows estrogen-binding properties.
组织特异性	Plasma. Synthesized by the fetal liver and yolk sac.
序列相似性	Belongs to the ALB/AFP/VDB family. Contains 3 albumin domains.
发展阶段	Occurs in the plasma of fetuses more than 4 weeks old, reaches the highest levels during the 12th-16th week of gestation, and drops to trace amounts after birth. The serum level in adults is usually less than 40 ng/ml. AFP occurs also at high levels in the plasma and ascitic fluid of adults with hepatoma.
翻译后修饰	Independent studies suggest heterogeneity of the N-terminal sequence of the mature protein and of the cleavage site of the signal sequence. Sulfated.
细胞定位	Secreted.

## 图片



Standard Curve for Alpha 1 Fetoprotein  
dilution range 1pg/ml to 1ug/ml using Capture  
Antibody [Mouse monoclonal to alpha 1 Fetoprotein \(ab54745\)](#) at 1ug/ml and Detector  
Antibody [Rabbit polyclonal to alpha 1 Fetoprotein \(ab8201\)](#) at 0.1ug/ml

Sandwich ELISA - Anti-alpha 1 Fetoprotein antibody  
(ab8201)

**Please note:** All products are "FOR RESEARCH USE ONLY AND ARE NOT INTENDED FOR DIAGNOSTIC OR THERAPEUTIC USE"

**Our Abpromise to you: Quality guaranteed and expert technical support**

- Replacement or refund for products not performing as stated on the datasheet
- Valid for 12 months from date of delivery
- Response to your inquiry within 24 hours
  
- We provide support in Chinese, English, French, German, Japanese and Spanish
- Extensive multi-media technical resources to help you
- We investigate all quality concerns to ensure our products perform to the highest standards

If the product does not perform as described on this datasheet, we will offer a refund or replacement. For full details of the Abpromise, please visit <https://www.abcam.cn/abpromise> or contact our technical team.

### **Terms and conditions**

---

- Guarantee only valid for products bought direct from Abcam or one of our authorized distributors