

Product datasheet

Anti-IL18R Beta antibody ab93408

1 图像

概述

产品名称	Anti-IL18R Beta抗体
描述	兔多克隆抗体to IL18R Beta
宿主	Rabbit
经测试应用	适用于: WB, ELISA
种属反应性	与反应: Human
免疫原	Synthetic peptide selected from the N terminal region of Human IL18R Beta conjugated to KLH (NP_003844.1).
阳性对照	K562 cell line lysates

性能

形式	Liquid
存放说明	Shipped at 4°C. Upon delivery aliquot and store at -20°C. Avoid repeated freeze / thaw cycles.
存储溶液	Preservative: 0.09% Sodium Azide Constituents: PBS
纯度	Immunogen affinity purified
纯化说明	ab93408 is purified through a protein A column, followed by peptide affinity purification.
克隆	多克隆
同种型	IgG

应用

Our [Abpromise guarantee](#) covers the use of **ab93408** in the following tested applications.

The application notes include recommended starting dilutions; optimal dilutions/concentrations should be determined by the end user.

应用	Ab评论	说明
WB		
ELISA		

应用说明

ELISA: 1/1000.

WB: 1/100 - 1/500. Predicted molecular weight: 68 kDa.

Not yet tested in other applications.

Optimal dilutions/concentrations should be determined by the end user.

靶标

功能

Required for the high affinity binding of interleukin 18 (IL-18) to its receptor complex (By similarity). Together with IL18R1 mediates IL-18-dependent activation of NF-kappa-B and JNK.

组织特异性

Strongly expressed in peripheral blood leukocytes, spleen, lung, and, to a lesser extent, in colon, but not in any other tissue tested. Strongly expressed in T-cells polarized with IL-12. Specifically coexpressed with IL18R1 in Th1 cells.

序列相似性

Belongs to the interleukin-1 receptor family.

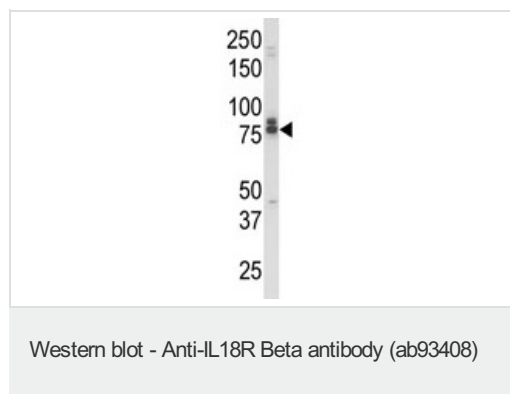
Contains 2 Ig-like C2-type (immunoglobulin-like) domains.

Contains 1 TIR domain.

细胞定位

Membrane.

图片



Anti-IL18R Beta antibody (ab93408) at 1/100 dilution + K562 cell line lysates at 35 µg

Predicted band size: 68 kDa

Please note: All products are "FOR RESEARCH USE ONLY AND ARE NOT INTENDED FOR DIAGNOSTIC OR THERAPEUTIC USE"

Our Abpromise to you: Quality guaranteed and expert technical support

- Replacement or refund for products not performing as stated on the datasheet
- Valid for 12 months from date of delivery
- Response to your inquiry within 24 hours
- We provide support in Chinese, English, French, German, Japanese and Spanish
- Extensive multi-media technical resources to help you
- We investigate all quality concerns to ensure our products perform to the highest standards

If the product does not perform as described on this datasheet, we will offer a refund or replacement. For full details of the Abpromise, please visit <https://www.abcam.cn/abpromise> or contact our technical team.

Terms and conditions

- Guarantee only valid for products bought direct from Abcam or one of our authorized distributors