


Product datasheet

Anti-Entactin antibody ab92694

1 图像

概述

产品名称	Anti-Entactin抗体
描述	兔多克隆抗体to Entactin
宿主	Rabbit
经测试应用	适用于: WB, ELISA
种属反应性	与反应: Human 预测可用于: Mouse, Rat 
免疫原	Synthetic peptide derived from an internal region of Human Entactin.
阳性对照	K562 cell lysate

性能

形式	Liquid
存放说明	Shipped at 4°C. Upon delivery aliquot and store at -20°C. Avoid repeated freeze / thaw cycles.
存储溶液	Preservative: 0.02% Sodium Azide Constituents: 50% Glycerol, PBS (without Mg <sup>2+</sup> and Ca <sup>2+</sup> ), 150mM Sodium chloride, pH 7.4
纯度	Immunogen affinity purified
克隆	多克隆
同种型	IgG

应用

Our [Abpromise guarantee](#) covers the use of **ab92694** in the following tested applications.

The application notes include recommended starting dilutions; optimal dilutions/concentrations should be determined by the end user.

应用	Ab评论	说明
----	------	----

WB

ELISA

应用说明 ELISA: 1/20000.

WB: 1/500 - 1/1000. Predicted molecular weight: 136 kDa.

Not yet tested in other applications.

Optimal dilutions/concentrations should be determined by the end user.

## 靶标

### 功能

Sulfated glycoprotein widely distributed in basement membranes and tightly associated with laminin. Also binds to collagen IV and perlecan. It probably has a role in cell-extracellular matrix interactions.

### 序列相似性

Contains 6 EGF-like domains.

Contains 4 LDL-receptor class B repeats.

Contains 1 NIDO domain.

Contains 1 nidogen G2 beta-barrel domain.

Contains 1 thyroglobulin type-1 domain.

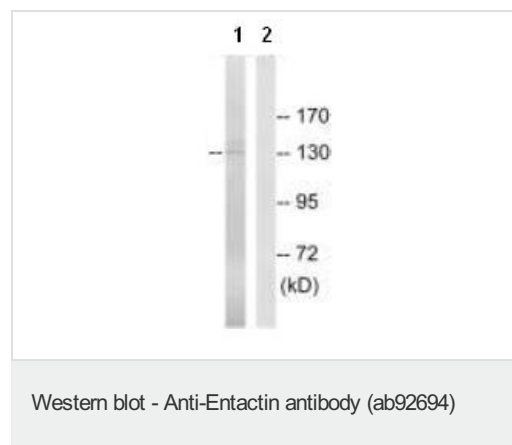
### 翻译后修饰

N- and O-glycosylated.

### 细胞定位

Secreted > extracellular space > extracellular matrix > basement membrane.

## 图片



**All lanes** : Anti-Entactin antibody (ab92694)  
at 1/500 dilution

**Lane 1** : extracts from K562 cells

**Lane 2** : extracts from K562 cells with  
immunizing peptide at 10 µg

Lysates/proteins at 30 µg per lane.

**Predicted band size:** 136 kDa

**Please note:** All products are "FOR RESEARCH USE ONLY AND ARE NOT INTENDED FOR DIAGNOSTIC OR THERAPEUTIC USE"

## Our Abpromise to you: Quality guaranteed and expert technical support

- Replacement or refund for products not performing as stated on the datasheet
- Valid for 12 months from date of delivery
- Response to your inquiry within 24 hours
- We provide support in Chinese, English, French, German, Japanese and Spanish
- Extensive multi-media technical resources to help you
- We investigate all quality concerns to ensure our products perform to the highest standards

If the product does not perform as described on this datasheet, we will offer a refund or replacement. For full details of the Abpromise, please visit <https://www.abcam.cn/abpromise> or contact our technical team.

## Terms and conditions

---

- Guarantee only valid for products bought direct from Abcam or one of our authorized distributors