

Product datasheet

Anti-FLJ21963 antibody ab91382

1 图像

概述

产品名称	Anti-FLJ21963抗体
描述	兔多克隆抗体to FLJ21963
宿主	Rabbit
经测试应用	适用于: WB, ELISA
种属反应性	与反应: Human
免疫原	Synthetic peptide selected from the center region of human FLJ21963, conjugated to KLH.
阳性对照	NCI-H460 cell lysate

性能

形式	Liquid
存放说明	Shipped at 4°C. Upon delivery aliquot and store at -20°C. Avoid freeze / thaw cycles.
存储溶液	Preservative: 0.09% Sodium azide Constituent: PBS
纯度	Immunogen affinity purified
纯化说明	This antibody is purified through a protein A column, followed by peptide affinity purification.
克隆	多克隆
同种型	IgG

应用

Our [Abpromise guarantee](#) covers the use of **ab91382** in the following tested applications.

The application notes include recommended starting dilutions; optimal dilutions/concentrations should be determined by the end user.

应用	Ab评论	说明
----	------	----

WB

ELISA

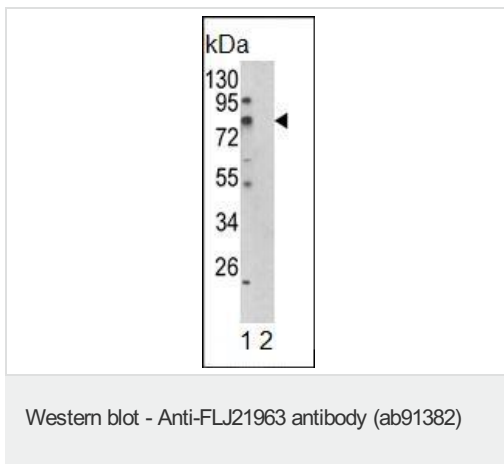
应用说明	ELISA: 1/1000. WB: 1/100 - 1/500. Predicted molecular weight: 75 kDa.
------	--

Not yet tested in other applications.
Optimal dilutions/concentrations should be determined by the end user.

靶标

功能	Activates acetate so that it can be used for lipid synthesis or for energy generation.
序列相似性	Belongs to the ATP-dependent AMP-binding enzyme family.
细胞定位	Mitochondrion.

图片



All lanes : Anti-FLJ21963 antibody (ab91382) at 2 µg/ml

Lane 1 : NCI-H460 cell lysate - blocking peptide

Lane 2 : NCI-H460 cell lysate + blocking peptide

Lysates/proteins at 35 µg per lane.

Predicted band size: 75 kDa

Please note: All products are "FOR RESEARCH USE ONLY AND ARE NOT INTENDED FOR DIAGNOSTIC OR THERAPEUTIC USE"

Our Abpromise to you: Quality guaranteed and expert technical support

- Replacement or refund for products not performing as stated on the datasheet
- Valid for 12 months from date of delivery
- Response to your inquiry within 24 hours
- We provide support in Chinese, English, French, German, Japanese and Spanish
- Extensive multi-media technical resources to help you
- We investigate all quality concerns to ensure our products perform to the highest standards

If the product does not perform as described on this datasheet, we will offer a refund or replacement. For full details of the Abpromise, please visit <https://www.abcam.cn/abpromise> or contact our technical team.

Terms and conditions

- Guarantee only valid for products bought direct from Abcam or one of our authorized distributors