


Product datasheet

Anti-MAML1 antibody ab90654

1 图像

概述

产品名称	Anti-MAML1抗体
描述	兔多克隆抗体to MAML1
宿主	Rabbit
经测试应用	适用于: IHC-P
种属反应性	与反应: Human 预测可用于: Chimpanzee 
免疫原	Synthetic peptide corresponding to a region between residues 75 and 125 of Human MAML1 (NP_055572.1).
阳性对照	Breast or ovarian carcinoma tissue.

性能

形式	Liquid
存放说明	Shipped at 4°C. Upon delivery aliquot and store at -20°C. Avoid freeze / thaw cycles.
存储溶液	Preservative: 0.09% Sodium azide Constituents: Tris buffered saline, 0.1% BSA
纯度	Immunogen affinity purified
克隆	多克隆
同种型	IgG

应用

Our [Abpromise guarantee](#) covers the use of **ab90654** in the following tested applications.

The application notes include recommended starting dilutions; optimal dilutions/concentrations should be determined by the end user.

应用	Ab评论	说明
----	------	----

IHC-P

**应用说明** IHC-P: 1/100 - 1/500. Antigen retrieval with tris-EDTA pH9.0 buffer recommended.  
Note: likely to work also with frozen sections.

Not yet tested in other applications.

Optimal dilutions/concentrations should be determined by the end user.

## 靶标

### 功能

Acts as a transcriptional coactivator for NOTCH proteins. Has been shown to amplify NOTCH-induced transcription of HES1. Enhances phosphorylation and proteolytic turnover of the NOTCH intracellular domain in the nucleus through interaction with CDK8. Binds to CREBBP/CBP which promotes nucleosome acetylation at NOTCH enhancers and activates transcription. Induces phosphorylation and localization of CREBBP to nuclear foci. Plays a role in hematopoietic development by regulating NOTCH-mediated lymphoid cell fate decisions.

### 组织特异性

Widely expressed with highest levels in heart, pancreas, peripheral blood leukocytes and spleen.

### 序列相似性

Belongs to the mastermind family.

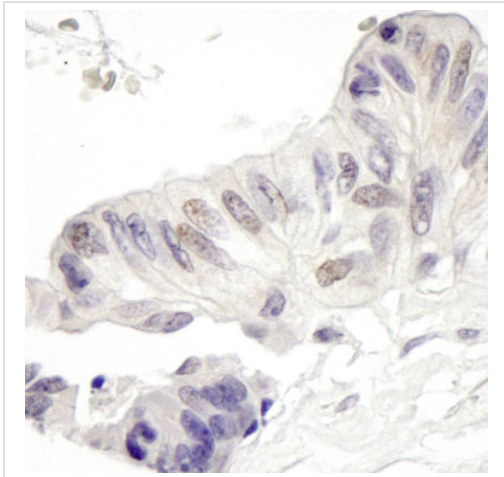
### 结构域

The C-terminal region is required for transcriptional activation.

### 细胞定位

Nucleus speckle. Nuclear, in a punctate manner.

## 图片



Immunohistochemical detection of Human MAML1 in formalin-fixed paraffin-embedded Human ovarian carcinoma tissue using ab90654 at a dilution of 1/250 (DAB staining).

Immunohistochemistry (Formalin/PFA-fixed paraffin-embedded sections) - Anti-MAML1 antibody (ab90654)

**Please note:** All products are "FOR RESEARCH USE ONLY AND ARE NOT INTENDED FOR DIAGNOSTIC OR THERAPEUTIC USE"

## Our Abpromise to you: Quality guaranteed and expert technical support

- Replacement or refund for products not performing as stated on the datasheet
- Valid for 12 months from date of delivery
- Response to your inquiry within 24 hours
- We provide support in Chinese, English, French, German, Japanese and Spanish
- Extensive multi-media technical resources to help you

- We investigate all quality concerns to ensure our products perform to the highest standards

If the product does not perform as described on this datasheet, we will offer a refund or replacement. For full details of the Abpromise, please visit <https://www.abcam.cn/abpromise> or contact our technical team.

### **Terms and conditions**

---

- Guarantee only valid for products bought direct from Abcam or one of our authorized distributors