

## Product datasheet

# Anti-Rsk 2 / MAPKAP Kinase 1b antibody ab90526

### 2 图像

#### 概述

<b>产品名称</b>	Anti-Rsk 2 / MAPKAP Kinase 1b抗体
<b>描述</b>	兔多克隆抗体to Rsk 2 / MAPKAP Kinase 1b
<b>宿主</b>	Rabbit
<b>经测试应用</b>	<b>适用于:</b> IHC-P, WB <b>不适用于:</b> IP
<b>种属反应性</b>	<b>与反应:</b> Mouse, Human <b>预测可用于:</b> Guinea pig, Cow, Dog, Pig, Chimpanzee, Rhesus monkey, Orangutan
<b>免疫原</b>	Synthetic peptide, corresponding to a region within the N terminal amino acids 1-50 of Human Rsk 2/ MAPKAP Kinase 1b (NP_004577.1)
<b>阳性对照</b>	HeLa, 293T and mouse NIH3T3 whole cell lysate.

#### 性能

<b>形式</b>	Liquid
<b>存放说明</b>	Shipped at 4°C. Upon delivery aliquot and store at -20°C. Avoid freeze / thaw cycles.
<b>存储溶液</b>	Preservative: 0.09% Sodium Azide Constituents: Tris citrate/phosphate, pH 7-8
<b>纯度</b>	Immunogen affinity purified
<b>克隆</b>	多克隆
<b>同种型</b>	IgG

#### 应用

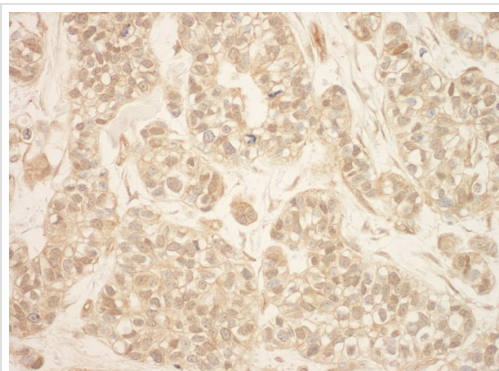
Our [Abpromise guarantee](#) covers the use of **ab90526** in the following tested applications.

The application notes include recommended starting dilutions; optimal dilutions/concentrations should be determined by the end user.

应用	Ab评论	说明
IHC-P		1/500 - 1/2000. Perform heat mediated antigen retrieval with citrate buffer pH 6 before commencing with IHC staining protocol.

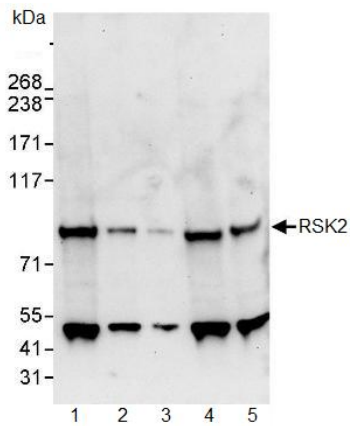
应用	Ab评论	说明
WB		1/2000 - 1/10000. Predicted molecular weight: 84 kDa.
<b>应用说明</b>		Is unsuitable for IP.
<b>靶标</b>		
<b>功能</b>		Serine/threonine kinase that may play a role in mediating the growth-factor and stress induced activation of the transcription factor CREB.
<b>组织特异性</b>		Expressed in many tissues, highest levels in skeletal muscle.
<b>疾病相关</b>		Defects in RPS6KA3 are the cause of Coffin-Lowry syndrome (CLS) [MIM:303600]; an X-linked dominant disorder characterized by severe mental retardation with facial and digital dysmorphisms, and progressive skeletal deformations.
<b>序列相似性</b>		Belongs to the protein kinase superfamily. AGC Ser/Thr protein kinase family. S6 kinase subfamily. Contains 1 AGC-kinase C-terminal domain. Contains 2 protein kinase domains.
<b>翻译后修饰</b>		Autophosphorylated on Ser-386, as part of the activation process. Ser-227 phosphorylation promotes Ser-386 phosphorylation and leads to basal activation. Full activation by growth factors requires additional phosphorylation on Ser-369.

## 图片



Immunohistochemistry (Formalin/PFA-fixed paraffin-embedded sections) analysis of human breast carcinoma tissue labelling Rsk 2 / MAPKAP Kinase 1b with ab90526 at 1/1000 (1µg/ml). Detection: DAB.

Immunohistochemistry (Formalin/PFA-fixed paraffin-embedded sections) - Anti-Rsk 2 / MAPKAP Kinase 1b antibody (ab90526)



Western blot - Anti-Rsk 2 / MAPKAP Kinase 1b antibody (ab90526)

**All lanes :** Anti-Rsk 2 / MAPKAP Kinase 1b antibody (ab90526) at 0.4 µg/ml

**Lane 1 :** whole cell lysate from HeLa cells at 50 µg

**Lane 2 :** whole cell lysate from HeLa cells at 15 µg

**Lane 3 :** whole cell lysate from HeLa cells at 5 µg

**Lane 4 :** whole cell lysate from 293T cells at 50 µg

**Lane 5 :** whole cell lysate from mouse NIH3T3 cells at 50 µg

Developed using the ECL technique.

**Predicted band size:** 84 kDa

**Exposure time:** 30 seconds

**Please note:** All products are "FOR RESEARCH USE ONLY AND ARE NOT INTENDED FOR DIAGNOSTIC OR THERAPEUTIC USE"

### Our Abpromise to you: Quality guaranteed and expert technical support

- Replacement or refund for products not performing as stated on the datasheet
- Valid for 12 months from date of delivery
- Response to your inquiry within 24 hours
- We provide support in Chinese, English, French, German, Japanese and Spanish
- Extensive multi-media technical resources to help you
- We investigate all quality concerns to ensure our products perform to the highest standards

If the product does not perform as described on this datasheet, we will offer a refund or replacement. For full details of the Abpromise, please visit <https://www.abcam.cn/abpromise> or contact our technical team.

### Terms and conditions

- Guarantee only valid for products bought direct from Abcam or one of our authorized distributors