

Product datasheet

Anti-TRP1 antibody ab89635

1 References 3 图像

概述

产品名称	Anti-TRP1抗体
描述	小鼠多克隆抗体to TRP1
宿主	Mouse
经测试应用	适用于: WB
种属反应性	与反应: Human
免疫原	Full length protein corresponding to Human TRP1.
阳性对照	Pancreas or A431 cell lysate

性能

形式	Liquid
存放说明	Shipped at 4°C. Upon delivery aliquot and store at -20°C or -80°C. Avoid repeated freeze / thaw cycles.
存储溶液	Preservative: None Constituents: 1X PBS, pH 7.2
纯度	Protein A purified
克隆	多克隆
同种型	IgG

应用

Our [Abpromise guarantee](#) covers the use of **ab89635** in the following tested applications.

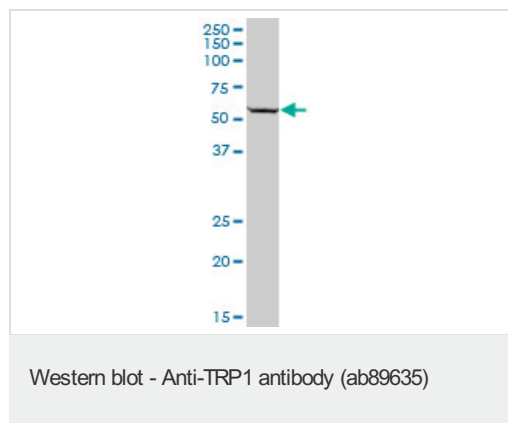
The application notes include recommended starting dilutions; optimal dilutions/concentrations should be determined by the end user.

应用	Ab评论	说明
WB		Use a concentration of 1 µg/ml. Predicted molecular weight: 61 kDa.

靶标

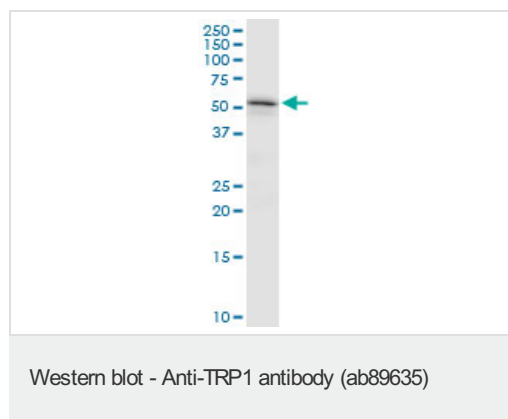
功能	Oxidation of 5,6-dihydroxyindole-2-carboxylic acid (DHICA) into indole-5,6-quinone-2-carboxylic acid. May regulate or influence the type of melanin synthesized.
组织特异性	Pigment cells.
通路	Pigment biosynthesis; melanin biosynthesis.
疾病相关	Defects in TYRP1 are the cause of albinism oculocutaneous type 3 (OCA3) [MIM:203290]; also known as Rufous oculocutaneous albinism. An autosomal recessive disorder in which the biosynthesis of melanin pigment is reduced in skin, hair, and eyes. Tyrosinase activity is normal and patients have only moderate reduction of pigment. The eyes present red reflex on transillumination of the iris, dilution of color of iris, nystagmus and strabismus. Darker-skinned individuals have bright copper-red coloration of the skin and hair.
序列相似性	Belongs to the tyrosinase family.
细胞定位	Melanosome membrane.

图片



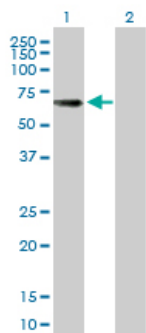
Anti-TRP1 antibody (ab89635) at 1 $\mu\text{g/ml}$ + Human pancreas lysate at 50 μg

Predicted band size: 61 kDa



Anti-TRP1 antibody (ab89635) at 1 $\mu\text{g/ml}$ + A431 cell lysate at 50 μg

Predicted band size: 61 kDa



Western blot - Anti-TRP1 antibody (ab89635)

All lanes : Anti-TRP1 antibody (ab89635) at 1 µg/ml

Lane 1 : Tyrosinase Related Protein 75 transfected 293T cell lysate

Lane 2 : Non-transfected lysate

Lysates/proteins at 25 µg per lane.

Predicted band size: 61 kDa

Please note: All products are "FOR RESEARCH USE ONLY AND ARE NOT INTENDED FOR DIAGNOSTIC OR THERAPEUTIC USE"

Our Abpromise to you: Quality guaranteed and expert technical support

- Replacement or refund for products not performing as stated on the datasheet
- Valid for 12 months from date of delivery
- Response to your inquiry within 24 hours
- We provide support in Chinese, English, French, German, Japanese and Spanish
- Extensive multi-media technical resources to help you
- We investigate all quality concerns to ensure our products perform to the highest standards

If the product does not perform as described on this datasheet, we will offer a refund or replacement. For full details of the Abpromise, please visit <https://www.abcam.cn/abpromise> or contact our technical team.

Terms and conditions

- Guarantee only valid for products bought direct from Abcam or one of our authorized distributors