

## Product datasheet

# Anti-LANPL antibody ab84731

### 2 图像

#### 概述

<b>产品名称</b>	Anti-LANPL 抗体
<b>描述</b>	兔多克隆抗体 to LANPL
<b>宿主</b>	Rabbit
<b>经测试应用</b>	<b>适用于:</b> IHC-P, WB
<b>种属反应性</b>	<b>与反应:</b> Human <b>预测可用于:</b> Mouse, Rat, Rabbit, Horse, Chicken, Guinea pig, Cow, Cat, Dog
<b>免疫原</b>	Synthetic peptide within residues: YLDGFDQEDN EAPDSEEEEDD EDGDEDDEEE EENEAGPPEG YEEEEEEEEEE , corresponding to internal sequence amino acids 144-193 of Human LANPL (NP_112182) <a href="#">Run BLAST with ExPASy</a> <a href="#">Run BLAST with NCBI</a>
<b>阳性对照</b>	293T cell lysate.

#### 性能

<b>形式</b>	Liquid
<b>存放说明</b>	Shipped at 4°C. Upon delivery aliquot and store at -20°C. Avoid repeated freeze / thaw cycles.
<b>存储溶液</b>	Preservative: 0.09% Sodium azide Constituents: 2% Sucrose, PBS
<b>纯度</b>	Immunogen affinity purified
<b>纯化说明</b>	ab84731 is purified by a peptide affinity chromatography method.
<b>克隆</b>	多克隆
<b>同种型</b>	IgG

#### 应用

Our [Abpromise guarantee](#) covers the use of **ab84731** in the following tested applications.

The application notes include recommended starting dilutions; optimal dilutions/concentrations should be determined by the end user.

应用	Ab 评论	说明
----	-------	----

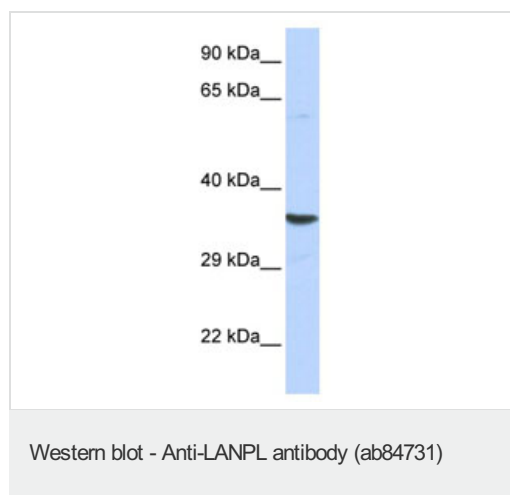
IHC-P Use at an assay dependent concentration.

WB Use a concentration of 1 µg/ml. Detects a band of approximately 31 kDa (predicted molecular weight: 31 kDa). Good results were obtained when blocked with 5% non-fat dry milk in 0.05% PBS-T.

## 靶标

功能	Inhibits activity of protein phosphatase 2A (PP2A). Does not inhibit protein phosphatase 1. May play a role in cerebellar development and synaptogenesis process by modulating PP2A activity.
组织特异性	Expressed in peripheral blood leukocytes, colon, small intestine, prostate, thymus, spleen, skeletal muscle, liver and kidney.
序列相似性	Belongs to the ANP32 family. Contains 4 LRR (leucine-rich) repeats. Contains 1 LRRCT domain.
翻译后修饰	Phosphorylated. The phosphorylation is nuclear localization signal (NLS)-dependent.
细胞定位	Cytoplasm. Nucleus.

## 图片



Anti-LANPL antibody (ab84731) at 1 µg/ml (in 5% skim milk / PBS buffer) + 293T cell lysate at 10 µg

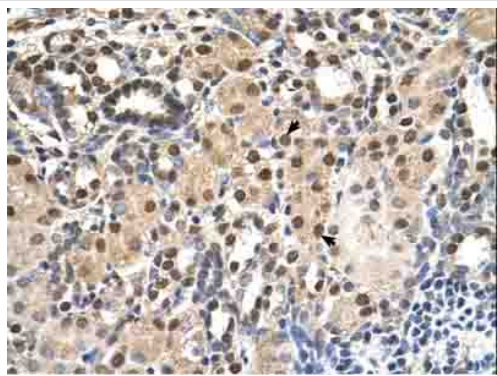
### Secondary

anti-Rabbit IgG HRP at 1/50000 dilution

**Predicted band size:** 31 kDa

**Observed band size:** 31 kDa

Gel concentration 12%



Immunohistochemistry (Formalin/PFA-fixed paraffin-embedded sections) - Anti-LANPL antibody (ab84731)

ab84731 staining LANPL in human kidney tissue by Immunohistochemistry (Formalin/PFA-fixed paraffin-embedded sections).  
Epithelial cells of renal tubules marked with black arrows.

**Please note:** All products are "FOR RESEARCH USE ONLY AND ARE NOT INTENDED FOR DIAGNOSTIC OR THERAPEUTIC USE"

### Our Abpromise to you: Quality guaranteed and expert technical support

---

- Replacement or refund for products not performing as stated on the datasheet
- Valid for 12 months from date of delivery
- Response to your inquiry within 24 hours
- We provide support in Chinese, English, French, German, Japanese and Spanish
- Extensive multi-media technical resources to help you
- We investigate all quality concerns to ensure our products perform to the highest standards

If the product does not perform as described on this datasheet, we will offer a refund or replacement. For full details of the Abpromise, please visit <https://www.abcam.cn/abpromise> or contact our technical team.

### Terms and conditions

---

- Guarantee only valid for products bought direct from Abcam or one of our authorized distributors