


Product datasheet

Anti-MCM3 antibody ab84151

2 图像

概述

产品名称	Anti-MCM3抗体
描述	山羊多克隆抗体to MCM3
宿主	Goat
经测试应用	适用于: IHC-P
种属反应性	与反应: Human 预测可用于: Horse, Pig, Chimpanzee, Rhesus monkey, Gorilla, Orangutan 
免疫原	Synthetic peptide corresponding to a region between residues 500 and 550 of Human MCM3 (NP_002379.2).
阳性对照	Human ovarian tumor. Human colon adenocarcinoma.

性能

形式	Liquid
存放说明	Shipped at 4°C. Upon delivery aliquot and store at -20°C. Avoid freeze / thaw cycles.
存储溶液	Preservative: 0.09% Sodium Azide Constituents: 0.1% BSA, Tris buffered saline
纯度	Immunogen affinity purified
克隆	多克隆
同种型	IgG

应用

Our [Abpromise guarantee](#) covers the use of **ab84151** in the following tested applications.

The application notes include recommended starting dilutions; optimal dilutions/concentrations should be determined by the end user.

应用	Ab评论	说明
----	------	----

IHC-P

应用说明 IHC-P: 1/100 - 1/500. Epitope exposure is recommended. Epitope exposure with citrate buffer will enhance staining.

Not yet tested in other applications.

Optimal dilutions/concentrations should be determined by the end user.

靶标

功能

Acts as component of the MCM2-7 complex (MCM complex) which is the putative replicative helicase essential for 'once per cell cycle' DNA replication initiation and elongation in eukaryotic cells. The active ATPase sites in the MCM2-7 ring are formed through the interaction surfaces of two neighboring subunits such that a critical structure of a conserved arginine finger motif is provided in trans relative to the ATP-binding site of the Walker A box of the adjacent subunit. The six ATPase active sites, however, are likely to contribute differentially to the complex helicase activity. Required for DNA replication and cell proliferation.

序列相似性

Belongs to the MCM family.

Contains 1 MCM domain.

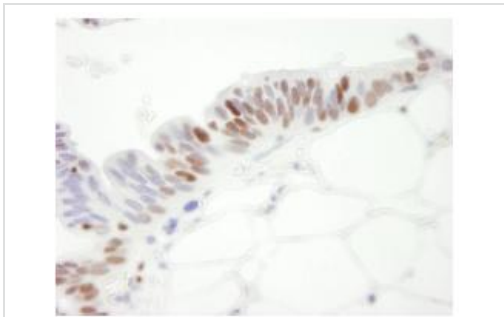
翻译后修饰

Phosphorylated upon DNA damage, probably by ATM or ATR.

细胞定位

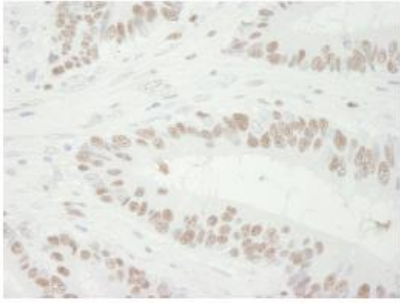
Nucleus.

图片



ab84151, at 1/250 dilution, staining MCM3 in formalin-fixed, paraffin-embedded human ovarian tumor by Immunohistochemistry using DAB detection.

Immunohistochemistry (Formalin/PFA-fixed paraffin-embedded sections) - Anti-MCM3 antibody (ab84151)



ab84151, at 1/250 dilution, staining MCM3 in formalin-fixed, paraffin-embedded human colon adenocarcinoma tissue by Immunohistochemistry using DAB detection.

Immunohistochemistry (Formalin/PFA-fixed paraffin-embedded sections) - Anti-MCM3 antibody (ab84151)

Please note: All products are "FOR RESEARCH USE ONLY AND ARE NOT INTENDED FOR DIAGNOSTIC OR THERAPEUTIC USE"

Our Abpromise to you: Quality guaranteed and expert technical support

- Replacement or refund for products not performing as stated on the datasheet
- Valid for 12 months from date of delivery
- Response to your inquiry within 24 hours
- We provide support in Chinese, English, French, German, Japanese and Spanish
- Extensive multi-media technical resources to help you
- We investigate all quality concerns to ensure our products perform to the highest standards

If the product does not perform as described on this datasheet, we will offer a refund or replacement. For full details of the Abpromise, please visit <https://www.abcam.cn/abpromise> or contact our technical team.

Terms and conditions

- Guarantee only valid for products bought direct from Abcam or one of our authorized distributors