

## Product datasheet

# Anti-CMTM2 antibody ab83263

### 1 图像

#### 概述

产品名称	Anti-CMTM2抗体
描述	兔多克隆抗体to CMTM2
宿主	Rabbit
经测试应用	适用于: WB, ELISA
种属反应性	与反应: Human 预测可用于: Rat, Rabbit, Horse, Cow, Dog
免疫原	Synthetic peptide corresponding to a region within N terminal amino acids 36-85 (DKPQKAVQDH KEP SDKPQKA VQPKHEVGTR RGCRRYRWEL KDSNKEFWLL) of human CMTM2 (NP_653274). <a href="#">Run BLAST with ExPASy</a> <a href="#">Run BLAST with NCBI</a>
阳性对照	Human placenta lysate.

#### 性能

形式	Liquid
存放说明	Shipped at 4°C. Upon delivery aliquot and store at -20°C. Avoid repeated freeze / thaw cycles.
存储溶液	Preservative: None Constituents: 2% Sucrose, PBS
纯度	Immunogen affinity purified
纯化说明	Purified by peptide affinity chromatography method.
克隆	多克隆
同种型	IgG

#### 应用

Our [Abpromise guarantee](#) covers the use of **ab83263** in the following tested applications.

The application notes include recommended starting dilutions; optimal dilutions/concentrations should be determined by the end user.

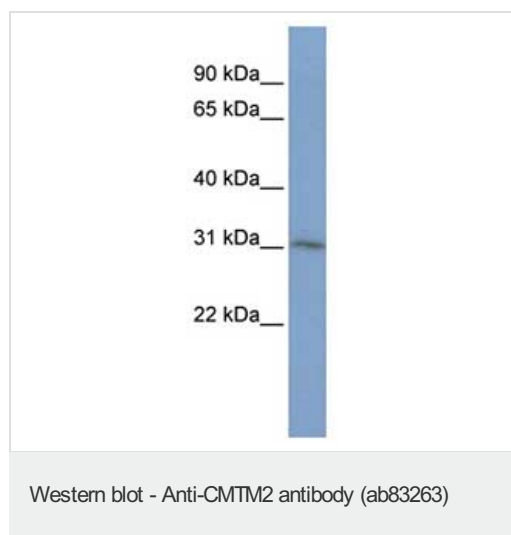
应用	Ab评论	说明
WB		Use a concentration of 1 µg/ml. Predicted molecular weight: 27 kDa. Good results were obtained when blocked with 5% non-fat dry milk in 0.05% PBS-T.
ELISA		Use at an assay dependent concentration. Titre using peptide based assay, 1:62500.

## 靶标

**相关性** CMTM2 belongs to the chemokine like factor gene superfamily, a novel family that links the chemokine and the transmembrane 4 superfamilies of signaling molecules. It may play an important role in testicular development.

**细胞定位** Membrane; Multi pass membrane protein.

## 图片



Anti-CMTM2 antibody (ab83263) at 1 µg/ml  
(in 5% skim milk / PBS buffer) + human  
placenta lysate at 10 µg

### Secondary

HRP conjugated anti-Rabbit IgG at 1/50000  
dilution

**Predicted band size:** 27 kDa

**Observed band size:** 31 kDa

Gel concentration: 12%

**Please note:** All products are "FOR RESEARCH USE ONLY AND ARE NOT INTENDED FOR DIAGNOSTIC OR THERAPEUTIC USE"

## Our Abpromise to you: Quality guaranteed and expert technical support

- Replacement or refund for products not performing as stated on the datasheet
- Valid for 12 months from date of delivery
- Response to your inquiry within 24 hours
- We provide support in Chinese, English, French, German, Japanese and Spanish
- Extensive multi-media technical resources to help you
- We investigate all quality concerns to ensure our products perform to the highest standards

If the product does not perform as described on this datasheet, we will offer a refund or replacement. For full details of the Abpromise, please visit <https://www.abcam.cn/abpromise> or contact our technical team.

## Terms and conditions

---

- Guarantee only valid for products bought direct from Abcam or one of our authorized distributors