

## Product datasheet

# Anti-LMF2 antibody ab81366

### 1 图像

#### 概述

产品名称	Anti-LMF2抗体
描述	兔多克隆抗体to LMF2
宿主	Rabbit
经测试应用	适用于: WB, ELISA
种属反应性	与反应: Human 预测可用于: Mouse, Rat, Rabbit, Horse, Guinea pig, Cow, Cat, Dog, Zebrafish
免疫原	Synthetic peptide: YSYVEPGTHG RLWTGAHRLF GAVEHLQLAN SYGLFRRMTG LGGRPEVVLE, corresponding to internal sequence amino acids 397-446 of Human LMF2 (NP_149977) <a href="#">Run BLAST with ExPASy</a> <a href="#">Run BLAST with NCBI</a>
阳性对照	HeLa cell lysate

#### 性能

形式	Liquid
存放说明	Shipped at 4°C. Upon delivery aliquot and store at -20°C. Avoid freeze / thaw cycles.
存储溶液	Preservative: None Constituents: 2% Sucrose, PBS
纯度	Immunogen affinity purified
克隆	多克隆
同种型	IgG

#### 应用

Our [Abpromise guarantee](#) covers the use of **ab81366** in the following tested applications.

The application notes include recommended starting dilutions; optimal dilutions/concentrations should be determined by the end user.

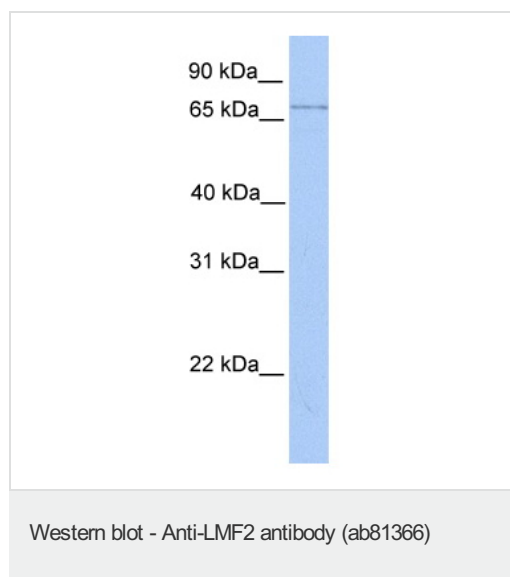
应用	Ab评论	说明
----	------	----

应用	Ab评论	说明
WB		Use a concentration of 1 µg/ml. Predicted molecular weight: 80 kDa. Good results were obtained when blocked with 5% non-fat dry milk in 0.05% PBS-T.
ELISA		Use at an assay dependent concentration. Titre using peptide based assay: 1/62500.

## 靶标

<b>功能</b>	Involved in the maturation of specific proteins in the endoplasmic reticulum. May be required for maturation and transport of active lipoprotein lipase (LPL) through the secretory pathway.
<b>序列相似性</b>	Belongs to the lipase maturation factor family.
<b>细胞定位</b>	Endoplasmic reticulum membrane.

## 图片



Anti-LMF2 antibody (ab81366) at 1 µg/ml (in 5% skim milk / PBS buffer) + HeLa cell lysate at 10 µg

### Secondary

HRP conjugated anti-Rabbit IgG at 1/50000 dilution

**Predicted band size:** 80 kDa

**Observed band size:** 75 kDa

Gel concentration 12%

**Please note:** All products are "FOR RESEARCH USE ONLY AND ARE NOT INTENDED FOR DIAGNOSTIC OR THERAPEUTIC USE"

## Our Abpromise to you: Quality guaranteed and expert technical support

- Replacement or refund for products not performing as stated on the datasheet
- Valid for 12 months from date of delivery
- Response to your inquiry within 24 hours
- We provide support in Chinese, English, French, German, Japanese and Spanish
- Extensive multi-media technical resources to help you

- We investigate all quality concerns to ensure our products perform to the highest standards

If the product does not perform as described on this datasheet, we will offer a refund or replacement. For full details of the Abpromise, please visit <https://www.abcam.cn/abpromise> or contact our technical team.

### **Terms and conditions**

---

- Guarantee only valid for products bought direct from Abcam or one of our authorized distributors