

Product datasheet

Anti-SULT4A1 antibody ab77445

2 图像

概述

产品名称	Anti-SULT4A1抗体
描述	小鼠单克隆抗体to SULT4A1
宿主	Mouse
经测试应用	适用于: WB, ELISA
种属反应性	与反应: Human 预测可用于: Mouse, Rat, Rabbit, Cow, Xenopus laevis, Zebrafish, Orangutan
免疫原	Recombinant fragment: MAESEAETPS TPGEFESKYF EFHGVRLLPPF CRGKMEEIAN FPVRPSDVWIVTYPKSGTSL LQEVVYLVSQ GADPDEIGLM NIDEQLPVLE YPQPGLDIK, corresponding to amino acids 1-100 of Human SULT4A1 (NP_055166) with a 26kDa tag. Run BLAST with ExPASy Run BLAST with NCBI
阳性对照	SULT4A1 transfected 293T cell lysate. Recombinant tagged human SULT4A1 fragment.

性能

形式	Liquid
存放说明	Shipped at 4°C. Upon delivery aliquot. Store at -20°C or -80°C. Avoid freeze / thaw cycle.
存储溶液	Preservative: None Constituents: 1X PBS, pH 7.2
纯度	Protein A purified
克隆	单克隆
同种型	IgG2a
轻链类型	kappa

应用

Our [Abpromise guarantee](#) covers the use of **ab77445** in the following tested applications.

The application notes include recommended starting dilutions; optimal dilutions/concentrations should be determined by the end user.

应用	Ab评论	说明
WB		Use a concentration of 1 - 5 µg/ml. Detects a band of approximately 33 kDa (predicted molecular weight: 33 kDa).
ELISA		Use at an assay dependent dilution.

靶标

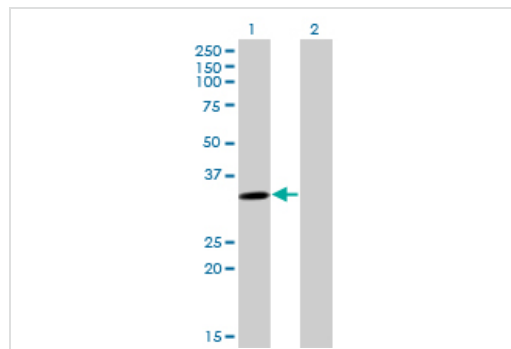
功能 Atypical sulfotransferase family member with very low affinity for 3'-phospho-5'-adenylyl sulfate (PAPS) and very low catalytic activity towards L-triiodothyronine, thyroxine, estrone, p-nitrophenol, 2-naphthylamine, and 2-beta-naphthol. May have a role in the metabolism of drugs and neurotransmitters in the CNS.

组织特异性 Highly expressed in the cerebral cortex and frontal lobe, slightly less in the cerebellum, occipital and temporal lobes, relatively low in the medulla and putamen, and lowest in the spinal cord. No expression detected in the pancreas (PubMed:10698717). Highly expressed in fetal brain and occipital lobe, slightly less in the whole brain, frontal lobe, hippocampus, and lung, very low expression in cerebellum, medulla oblongata, temporal lobe, testis, kidney and appendix (PubMed:12039030).

序列相似性 Belongs to the sulfotransferase 1 family.

细胞定位 Cytoplasm.

图片



Western blot - Anti-SULT4A1 antibody (ab77445)

All lanes : Anti-SULT4A1 antibody (ab77445)
at 1 µg/ml

Lane 1 : SULT4A1 transfected 293T cell
lysate

Lane 2 : Non-transfected 293T cell lysate

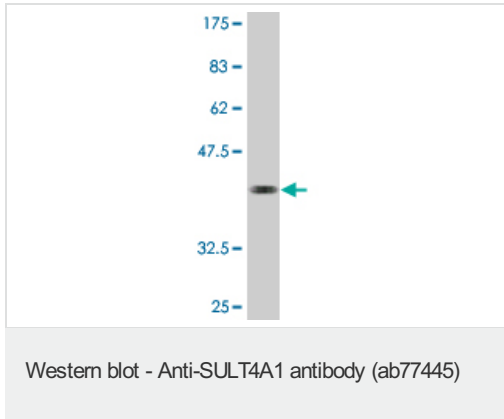
Lysates/proteins at 25 µg per lane.

Secondary

All lanes : Goat anti-mouse IgG (H&L)-HRP
conjugate at 1/2500 dilution

Predicted band size: 33 kDa

Observed band size: 33 kDa



Anti-SULT4A1 antibody (ab77445) at 1 µg/ml
+ Recombinant tagged Human SULT4A1
fragment at 0.2 µg

Secondary

Goat anti-mouse IgG (H&L)-HRP conjugate at
1/5000 dilution

Predicted band size: 33 kDa

Observed band size: 40 kDa

Western blot against tagged recombinant
protein immunogen. Predicted band size of
immunogen is 37 kDa.

Please note: All products are "FOR RESEARCH USE ONLY AND ARE NOT INTENDED FOR DIAGNOSTIC OR THERAPEUTIC USE"

Our Abpromise to you: Quality guaranteed and expert technical support

- Replacement or refund for products not performing as stated on the datasheet
- Valid for 12 months from date of delivery
- Response to your inquiry within 24 hours
- We provide support in Chinese, English, French, German, Japanese and Spanish
- Extensive multi-media technical resources to help you
- We investigate all quality concerns to ensure our products perform to the highest standards

If the product does not perform as described on this datasheet, we will offer a refund or replacement. For full details of the Abpromise, please visit <https://www.abcam.cn/abpromise> or contact our technical team.

Terms and conditions

- Guarantee only valid for products bought direct from Abcam or one of our authorized distributors