

Product datasheet

Anti-Prolactin Receptor / PRL-R antibody [B6.2], prediluted ab74608

1 图像

概述

| | |
|-------|---|
| 产品名称 | Anti-Prolactin Receptor / PRL-R抗体[B6.2], prediluted |
| 描述 | 小鼠单克隆抗体[B6.2] to Prolactin Receptor / PRL-R, prediluted |
| 宿主 | Mouse |
| 经测试应用 | 适用于: IHC-P |
| 种属反应性 | 与反应: Human |
| 免疫原 | Semi-purified human prolactin receptor. |
| 阳性对照 | Human breast carcinoma tissue. |

性能

| | |
|------|-----------------------------------|
| 形式 | Prediluted |
| 存放说明 | Shipped at 4°C. Store at +4°C. |
| 纯度 | Protein G purified |
| 纯化说明 | ab74608 was purified from ascites |
| 克隆 | 单克隆 |
| 克隆编号 | B6.2 |
| 同种型 | IgG1 |

应用

Our [Abpromise guarantee](#) covers the use of **ab74608** in the following tested applications.

The application notes include recommended starting dilutions; optimal dilutions/concentrations should be determined by the end user.

| 应用 | Ab评论 | 说明 |
|----|------|----|
|----|------|----|

IHC-P

| | |
|------|---|
| 应用说明 | IHC-P: Ready to use. Staining of formalin/paraffin tissues requires digestion of tissue sections with pepsin at 1mg/ml Tris-HCl, pH 2.0 for 15 min at RT or 10 min at 37C. |
|------|---|

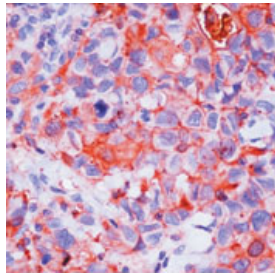
Not yet tested in other applications.

Optimal dilutions/concentrations should be determined by the end user.

靶标

| | |
|--------------|---|
| 功能 | This is a receptor for the anterior pituitary hormone prolactin (PRL). Isoform 4 is unable to transduce prolactin signaling. Isoform 6 is unable to transduce prolactin signaling. |
| 组织特异性 | Expressed in breast, placenta, kidney, liver and pancreas. |
| 序列相似性 | Belongs to the type I cytokine receptor family. Type 1 subfamily. Contains 2 fibronectin type-III domains. |
| 结构域 | The WSXWS motif appears to be necessary for proper protein folding and thereby efficient intracellular transport and cell-surface receptor binding. The box 1 motif is required for JAK interaction and/or activation. |
| 细胞定位 | Secreted and Membrane. |

图片



Prolactin receptor at 1 ug/ml in human breast carcinoma by Immunohistochemistry, Formalin-fixed, Paraffin-embedded tissue using peroxidase-conjugate and AEC chromogen. Note cell membrane and cytoplasmic staining of tumor cells.

Immunohistochemistry (Formalin/PFA-fixed paraffin-embedded sections) - Anti-Prolactin Receptor antibody [B6.2], prediluted (ab74608)

Please note: All products are "FOR RESEARCH USE ONLY AND ARE NOT INTENDED FOR DIAGNOSTIC OR THERAPEUTIC USE"

Our Abpromise to you: Quality guaranteed and expert technical support

- Replacement or refund for products not performing as stated on the datasheet
- Valid for 12 months from date of delivery
- Response to your inquiry within 24 hours
- We provide support in Chinese, English, French, German, Japanese and Spanish
- Extensive multi-media technical resources to help you
- We investigate all quality concerns to ensure our products perform to the highest standards

If the product does not perform as described on this datasheet, we will offer a refund or replacement. For full details of the Abpromise, please visit <https://www.abcam.cn/abpromise> or contact our technical team.

Terms and conditions

- Guarantee only valid for products bought direct from Abcam or one of our authorized distributors