

Product datasheet

Anti-GIMAP5 antibody ab74575

1 References 2 图像

概述

产品名称	Anti-GIMAP5抗体
描述	兔多克隆抗体to GIMAP5
宿主	Rabbit
特异性	ab74575 detects endogenous levels of total GIMAP5 protein.
经测试应用	适用于: ELISA, WB, IHC-P
种属反应性	与反应: Human
免疫原	Synthetic peptide derived from internal sequence of human GIMAP5.
阳性对照	Human placenta tissue. Extracts from HeLa cells and HT-29 cells.

性能

形式	Liquid
存放说明	Shipped at 4°C. Upon delivery aliquot and store at -20°C. Avoid repeated freeze / thaw cycles.
存储溶液	Preservative: 0.02% Sodium Azide Constituents: 50% Glycerol, PBS (without Mg ²⁺ and Ca ²⁺), 150mM Sodium chloride, pH 7.4
纯度	Immunogen affinity purified
克隆	多克隆
同种型	IgG

应用

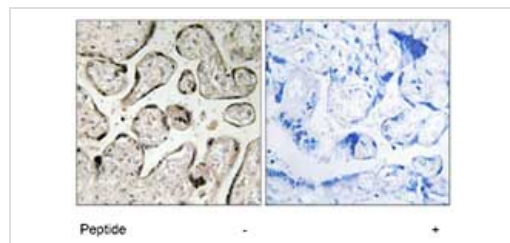
Our [Abpromise guarantee](#) covers the use of **ab74575** in the following tested applications.

The application notes include recommended starting dilutions; optimal dilutions/concentrations should be determined by the end user.

应用	Ab评论	说明
ELISA		1/20000.
WB		1/500 - 1/1000. Predicted molecular weight: 35 kDa.
IHC-P		1/50 - 1/100.

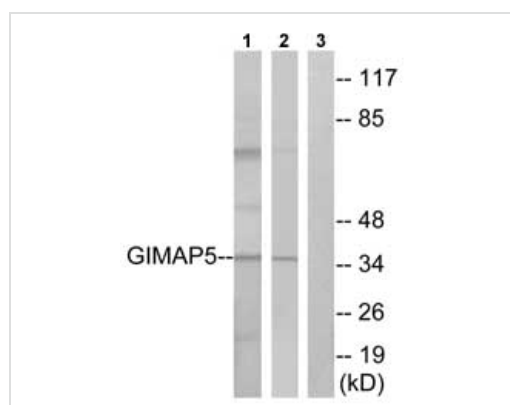
靶标

图片



Immunohistochemistry (Formalin/PFA-fixed paraffin-embedded sections) - Anti-GIMAP5 antibody (ab74575)

Immunohistochemistry analysis of GIMAP5 in paraffin-embedded human placenta tissue using ab74575, at 1/50-1/100 dilution, in the presence (+) or absence (-) of immunising peptide.



Western blot - Anti-GIMAP5 antibody (ab74575)

All lanes : Anti-GIMAP5 antibody (ab74575) at 1/500 dilution

Lane 1 : Extracts from HeLa cells

Lane 2 : Extracts from HT-29 cells

Lane 3 : Extracts from HeLa cells with immunising peptide at 10 µg

Lysates/proteins at 30 µg per lane.

Predicted band size: 35 kDa

Observed band size: 35 kDa

Additional bands at: 75 kDa. We are unsure as to the identity of these extra bands.

Please note: All products are "FOR RESEARCH USE ONLY AND ARE NOT INTENDED FOR DIAGNOSTIC OR THERAPEUTIC USE"

Our Abpromise to you: Quality guaranteed and expert technical support

- Replacement or refund for products not performing as stated on the datasheet
- Valid for 12 months from date of delivery
- Response to your inquiry within 24 hours
- We provide support in Chinese, English, French, German, Japanese and Spanish
- Extensive multi-media technical resources to help you
- We investigate all quality concerns to ensure our products perform to the highest standards

If the product does not perform as described on this datasheet, we will offer a refund or replacement. For full details of the Abpromise, please visit <https://www.abcam.cn/abpromise> or contact our technical team.

Terms and conditions

- Guarantee only valid for products bought direct from Abcam or one of our authorized distributors