

Product datasheet

Anti-SEMA6C antibody ab68471

1 图像

概述

产品名称	Anti-SEMA6C抗体
描述	小鼠多克隆抗体to SEMA6C
宿主	Mouse
经测试应用	适用于: WB
种属反应性	与反应: Human
免疫原	SEMA6C (NP_112175, 1 a.a. ~ 930 a.a) full-length human protein.
阳性对照	SEMA6C transfected 293T lysate.

性能

形式	Liquid
存放说明	Shipped at 4°C. Upon delivery aliquot and store at -20°C or -80°C. Avoid repeated freeze / thaw cycles.
存储溶液	Preservative: None Constituents: PBS, pH 7.2
纯度	Protein A purified
克隆	多克隆
同种型	IgG

应用

Our [Abpromise guarantee](#) covers the use of **ab68471** in the following tested applications.

The application notes include recommended starting dilutions; optimal dilutions/concentrations should be determined by the end user.

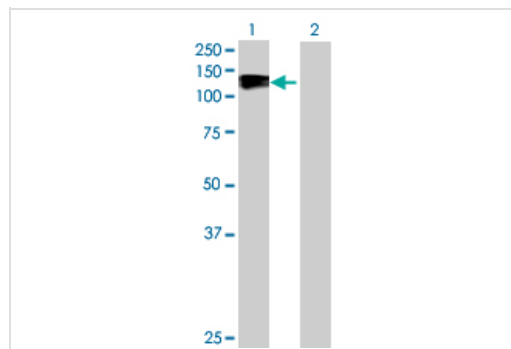
应用	Ab评论	说明
WB		1/500 - 1/1000. Detects a band of approximately 130 kDa (predicted molecular weight: 100 kDa).

靶标

相关性 SEMA6C belongs to a subfamily characterized by an extracellular semaphorin domain, a transmembrane domain, and a long cytoplasmic tail. Members of this class can repel sympathetic and dorsal root ganglion axons in vitro, consistent with a traditional role as guidance signals. SEMA6C shows growth cone collapsing activity on dorsal root ganglion (DRG) neurons in vitro and may be a stop signal for the DRG neurons in their target areas, and possibly also for other neurons. SEMA6C may also be involved in the maintenance and remodeling of neuronal connections.

细胞定位 Membrane; Single-pass type I membrane protein.

图片



Western blot - Anti-SEMA6C antibody (ab68471)

All lanes : Anti-SEMA6C antibody (ab68471)
at 1/500 dilution

Lane 1 : SEMA6C transfected 293T lysate

Lane 2 : Non-transfected 293T lysate

Lysates/proteins at 25 µg per lane.

Secondary

All lanes : Goat Anti-Mouse IgG (H&L)-HRP
at 1/2500 dilution

Predicted band size: 100 kDa

Observed band size: 130 kDa

Please note: All products are "FOR RESEARCH USE ONLY AND ARE NOT INTENDED FOR DIAGNOSTIC OR THERAPEUTIC USE"

Our Abpromise to you: Quality guaranteed and expert technical support

- Replacement or refund for products not performing as stated on the datasheet
- Valid for 12 months from date of delivery
- Response to your inquiry within 24 hours
- We provide support in Chinese, English, French, German, Japanese and Spanish
- Extensive multi-media technical resources to help you
- We investigate all quality concerns to ensure our products perform to the highest standards

If the product does not perform as described on this datasheet, we will offer a refund or replacement. For full details of the Abpromise, please visit <https://www.abcam.cn/abpromise> or contact our technical team.

Terms and conditions

- Guarantee only valid for products bought direct from Abcam or one of our authorized distributors